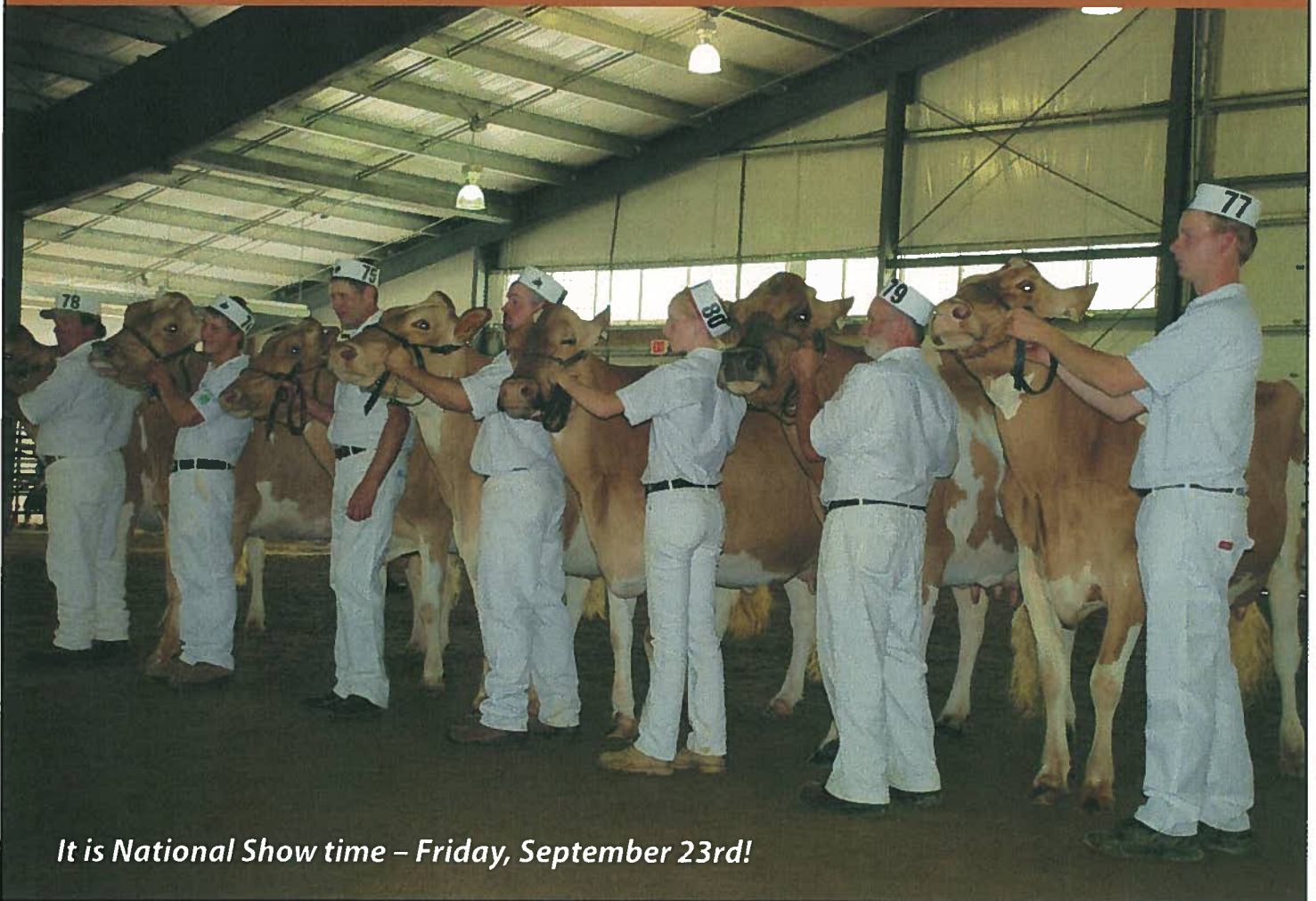




Guernsey News

September 2011



It is National Show time – Friday, September 23rd!



Administration Office

5653 Hwy 6 North
Guelph, ON, N1H 6J2

Email: info@guernseycanada.ca
Administrator: Jessie Weir
Phone: 519-836-2141
Fax: 519-763-6582

Fieldman: Rob Forster
Email: rforster@guernseycanada.ca
Phone: 905-648-9640

Administrator's Message....

Plans are well underway for the National Show in Ancaster on Friday, September 23rd. The entry deadline of Friday, September 2nd is fast approaching. Entries can be submitted to the Guernsey office by email info@guernseycanada.ca, or fax 519-763-6582. If unable to bring animals to the show, please continue to support the breed by attending on show day. The show is a great opportunity to meet past and present members and to view quality Guernsey cattle judged by Richard Landry.

There are various projects the Promotion Committee will be presenting to the Board at an upcoming Board meeting. One of the projects approved thus far is a new membership directory. I have enclosed with this mailing a form for our members to complete and submit to the office. If you wish to not be included in the directory it is important for the form to be completed as well indicating your wish to not be included. The deadline for submitting forms is October 15th. It has been sometime since a membership directory has been printed so we are looking forward to a new version and distributing to our membership. Another project accepted and well in the works is adding French to the Guernsey Canada website. We have a few members in Quebec and the Board wishes to provide this service to our French members as well as to encourage new memberships. The new version of the website will be launched later this year. The Board also discussed including thurl placement as a trait on the Guernsey classification scorecard and has decided to leave this trait as a research trait and to continue to collect the data. The thurl placement trait can be included at a later date.

Congratulations to Ken & Chris Forster with Maplehurst Aarons Bianca who is the #1 LPI cow following the August proof run. The Top 5 LPI Guernsey herds for the August 2011 round are Eby Manor Farms Ltd., Cedar Ridge Farms Ltd, Maplehurst Farms, Broadview and Comfort Farms. The Top LPI Bull list remained the same for the top 5 bulls and no new young sires added. There are a number of CDN reports printed in the newsletter and not enough room to print all of them. Other CDN reports of interest can be found at http://www.cdn.ca/files_ge_articles.php.

Scott Gordon has had Guernsey information on Facebook for some time now and Amy Lindsay will be working toward having Canadian Guernsey on Facebook. Make sure to check it out!

Looking forward to seeing many of you at the National Show!

Kind Regards,

Jessie Weir
Administrator

Classification Schedule August 2011 – October 2011

Early August

On – Middlesex, Essex, Kent, Elgin
On – mid round: Simcoe, Dufferin,
Peterborough
Qc – Rimouski, Matapedia, Bonaventure, Matane
Qc – mid round: Lapointe, Dubuc, Charlevoix,
Chicoutimi

Mid August

On – mid round: Northumberland, Lennox, Addington,
Frontenac, Hastings, Prince Edward
Qc - Arthabaska
Qc – mid round: Vaudreuil, Soulanges, Huntingdon,
Chateauguay, Beauharnois, Laprairie, Napierville, St.
Jean, Iberville
PE, NB, NS, NL – mid round

Late August

On – mid round: Waterloo
Qc – Megantic, Wolfe
Qc – mid round: Richmond, Missisquoi, Shefford

Early September

On – Oxford
On – mid round: Victoria, Durham
Qc – mid round: Brome, Compton, Sherbrooke,
Stanstead

Mid September

On – Perth
On – mid round: Wellington
Qc – Nicolet, Yamaska
Saskatchewan – mid round

Late September

On – mid round: Thunder Bay, Northern Ontario
Qc – Drummond, Bagot, St. Hyacinthe, Richelieu
Qc – mid round: Frontenac, Beauce, Levis, Quebec,
Montmorency

Early October

On – Leeds, Grenville, Lanark
On – mid round: Prescott, Glengarry
Qc – Vercheres, Rouville, Labelle, Argenteuil
Qc – mid round: Dorchester
BC – Lower & Central Fraser Valley, Richmond Delta

Mid October

On – Renfrew, Grey
On – mid round: Dundas, Stormont, Carleton, Russell,
Niagara, Wentworth, Brant, Haldimand & Norfolk
Qc – Abitibi, Temiscamingue, Papineau, Gatineau, Deux
Montagnes, Terrebonne, L'Assomption, Montcalm
Qc – mid round: Bellechasse

Late October

Qc – Pontiac, Joliette, Berthier, Maskinonge, St. Maurice
BC – Upper Fraser Valley, Okanagan, Vancouver Island



SEMEX NEWS FOR CANADIAN GUERNSEY OWNERS

by: Russell Gammon, Semex Sire Analyst



Hello Canadian Guernsey owners from the Semex Alliance! This is Russell Gammon reporting as the Manager of Semex Jersey, Guernsey and Brown Swiss programs since June 1 this year. Without going into excruciating detail let me say that the first cows I can ever remember seeing were two Guernsey cows that my maternal grandmother Barnard kept as her house

cows after my grandfather passed away. She lived in Caribou in scenic Pictou County, Nova Scotia near our family home. At college at Guelph Guernsey fans and leaders like David Larmer (brother of our Semex CEO Paul Larmer) and Ken McNabb and others were in my graduating class and were respected leaders there. Then the summer after my graduation from Ontario Agricultural College I enjoyed my first role in the working world as Summer Fieldman for Ontario Guernsey visiting 225 Guernsey farms from June till mid-September. After that I was back home in Nova Scotia and worked with some super and dedicated Guernsey people via a role as Extension worker with Nova Scotia Joint Dairy Breeds. In June of 1981 I began a career with Jersey Canada that spanned three decades minus two weeks. In the Jersey role we had the privilege of interacting with some great Guernsey leaders via the joint Classification Board. We quickly came to respect and value these people for their dedication to cooperation and progress. So, once again interacting with Guernsey owners and breeders has two aspects: 1. It feels like coming home. 2. On the other hand it is simply a continuation of time and pleasurable effort expended working with Guernsey people, on and off, for nicely over three decades. Now, enough history-let's talk of today and tomorrow. Here's three bits of news for you:

1. With regard to proven bulls there was very little change in the proofs of any of the leading bulls on the August 2011 proof run. This time around no fresh new faces in Canada.

2. On the other hand we are brimming over with news of young sires becoming available and who will come on line in the next twelve months. While he is not in our regular young sire sampling/proving program Guernsey owners have access to semen from Indian Acres Phoenix-ET via Semex as of August 2011. As any Guernsey breed follower will guess from his prefix and his P name this bull is a son of breed icon and poster-child for Guernsey excellence Indian Acres MM Pistachio Pie. Most everyone recalls the thrill she sent through the entire dairy industry when she was Supreme Champion at World Dairy Expo just a few years back. It is worth noting that Pie is a leading daughter of the very popular Semex sire Four Winds Magic Man. Phoenix's older brother Prada (by Sniders Option Aaron-ET) was also made available to the Guernsey world by Semex in very recent times.

Let's hope these two lads make some daughters-many daughters like their highly appealing dam!

In our regular proving program we're making Lang Haven Natural Ninja available as a new release as of October 1st. You'll read all about him on his young sire sheet but let's recap a few highlights of what this April 2010 bull brings to the table:
-Parent Average of +1079 LPI, +8 type, +868 milk, +41 kgs fat, +.03%, +31 protein, +.02.

-Four generations of Ex dams all over 20,000 pounds of fat and 900 pounds of protein in 305 days actual.

-His Tiller dam Nevaeh, Ex91% has fat tests to 5.5% of milk while making 25,600 pounds of milk on the same lactation. Nevaeh is the number 13 cow in the USA for CPI in August 2011. This is an amazing cow family of high index, high yielding, above average testing cows with higher than average classification scores and some show winnings sprinkled in for good measure! Not much more to ask for.

-Ninja is by US proven sire Lang Haven Decision's Natural and is the product of careful line breeding to two cows Trotacres Fayette Loretta and Lang Haven Perfecto Nicole. Remember that release date October 1. We know this bull will be very popular!

Coming in 2012 will be Lindrian Python a June 2010 son of Sniders Option Aaron-ET, a popular US Guernsey proven sire. Python is from the same family as Pinto a young bull recently sampled in our Semex Guernsey program. They were bred in British Columbia. Python's dam is a superb Ex-92 daughter of Land Of Living P Garrett. This cow has a records to 6-5 14,216 740 5.2 483 3.3 BCAs (406-425-370). Yes, we typed that all correctly. WOW! We agree! At the moment Python's parent average shows +1220 LPI, big pluses for components, big pluses for type and low SCS! Watch for him to wrap himself around your heart and herd in a very good way in 2012!

3. We are so open to dialogue with your members and association regarding the genetic future of Guernseys in Canada and beyond. We've read Guernsey World's latest edition and the challenges proffered to the Guernsey world at large at your 2010 World conference hosted in Canada. We need to know where you stand on the world plans for reinvigorating the breed. And we want you to know that we have good dialogue with our friend and yours Seth Johnson of US Guernsey and his right hand man Brian Schnebly. Those two men are Guernsey through and through and Guernsey blood flows in their veins! Till next time Guernsey on and stay in touch! Russell Gammon or rgammon@semex.com also 519-821-5060, ext.240!!

A Word from Your President. . .

A number of years ago, John Ayres from Land of Living farm in Ohio, USA was the guest speaker at our Annual Guernsey meeting. John related to us that the greatest attribute of the Guernsey cow is her unique and high quality milk. He stated that niche markets could be found for Guernsey milk and breed progress would naturally occur.

I believe that there is a lot of truth to what John spoke about. The Ayres family is now producing Guernsey ice cream and a number of other US Guernsey milk farms are successfully marketing Guernsey milk or Guernsey milk products.

However, for us in Canada there was little opportunity for us to market Guernsey milk. I have often thought about past successes of marketing Guernsey milk, before the days of supply management. I have always believed the system was too rigid because it stifled niche marketing opportunities. Our DFO has now come to the same realization and are offering farmers the opportunity to process and market their own milk, within the regulated system.

We are seeing the success of marketing Guernsey cheese by Upper Canada Cheese Co. and more recently by the Royce family of Listowel.

At Eby Manor we are in discussions with the DFO regarding marketing our milk, and we are currently negotiating with a dairy to process and bottle our milk. This would be done in glass and plastic bottles then sold as 100% Guernsey.

We have been speaking with store managers and are encouraged by their response and willingness to carry our milk as a premium product. There is still a ways to go before this all comes together, but the prospects look exciting. Our goal is to eventually market all our milk through local stores, at this point. We hope that through aggressive marketing we can eventually provide opportunities for other Guernsey Breeders to benefit as well.

On the topic of Breed promotion; the Promotions Committee met in June. Amy Lindsay accepted the position of Chairperson. A number of ideas were discussed and will continue to be developed.

Last year our board entered into an agreement with the American Guernsey Association to produce a North American Promotional Pamphlet. The US staff are currently working on this and it is to be ready this fall.

There is currently a demand for Guernsey cattle. If you have any Guernsey's you can sell, or if you are looking to buy, please contact our fieldsman; Rob Forster.

Looking forward to seeing many of you at our Canadian National Guernsey Show in Ancaster on Friday September 23rd!

President of Canadian Guernsey Association

Jim Eby

2011 Excellents (Jan - July 31, 2011)

GUCANF7433741	MAPLEHURST LES VOLTS	EX	91 1E	KEN D FORSTER	ON
GUCANF7766122	EBY LAWN V FLIP	EX	91 1E	EBY MANOR LTD	ON
GUCANF8508412	GUERNSEY VIEW JAYDEN'S NIKKI	EX	90 4E	CEDAR RIDGE FARMS LTD	NB
GUCANF8860603	EBY MANOR LEWIS SHERREL	EX	90 2E	EBY MANOR LTD	ON
GUCANF7433720	MAPLEHURST RUSS MUSIC	EX	90 1E	KEN D FORSTER	ON
GUCANF7703607	BEAVERWOOD B J'S PRISS	EX	90 1E	GARY WEST	NB

2011 Very Good Two Year Olds (Jan - July 31, 2011)

GUCANF9594180	MAPLEHURST MAGICMAN BATHSHEBA	VG2	88	KEN D FORSTER	ON
GUCANF9594173	MAPLEHURST ARCHIE NADIA	VG2	87	KEN D FORSTER	ON
GUCANF9594167	MAPLEHURST AARONS BIANCA	VG2	86	KEN D FORSTER	ON
GUCANF9549708	WARRINDALE STONE UNITY	VG2	86	WARRINDALE FARMS	ON
GUCANF9612243	EBY MANOR LEVI LORI	VG2	85	EBY MANOR LTD	ON
GUCANF9589110	BEAVERWOOD MISSION'S OPHELIA	VG2	85	GARY WEST	NB
GUCANF9594158	MAPLEHURST MELODY'S MISSION	VG2	85	KEN D FORSTER	ON
GUCANF9589115	BEAVERWOOD MISSION'S BELLE	VG2	85	GARY WEST	NB
GUCANF9984885	EBY LAWN DELTA HOLLY	VG2	85	EBY MANOR LTD	ON
GUCANF9594169	MAPLEHURST ARCHIE BEAUTIFUL	VG2	85	KEN D FORSTER	ON
GUCANF9594183	MAPLEHURST HUDSON GEORGINA	VG2	85	KEN D FORSTER	ON
GUCANF9863477	GUERNSEY VIEW NIKKI'S UNITY	VG2	85	CEDAR RIDGE FARMS LTD	NB
GUCANF9594165	MAPLEHURST AARONS LICORICE	VG2	85	ROBERT FORSTER	ON
GUCANF9594185	MAPLEHURST ARCHIE'S TRINKET	VG2	85	KEN D FORSTER	ON

Canadian National Guernsey Show 2011

September 23, 2011

Ancaster Fairgrounds, 630 Trinity Rd, Jerseyville, ON

Deadline for Entries Friday, September 2nd, 2011

Submit all entries to the Guernsey office
by email or fax info@guernseycanada.ca,
Fax: 519-763-6582



2010 Grand Champion
Sun Set Mission Natalena, Owned by:
Terry R Beckett, Sunderland, ON

Fieldman Report – Summer/Fall

The big show is only a month away. The 2011 version of the Canadian National Guernsey Show will be held on Friday September 23 at the Ancaster Fairgrounds. In the past years many fine animals paraded around the ring and this year will be no different. I invite all Guernsey enthusiasts – past, present and future to attend this event.

The other big news is from the sale ring. At the American Guernsey Convention held in Greenville, Illinois (near St. Louis) in late June, Maplehurst Magicman Bathsheba consigned by Maplehurst Farm sold for \$11300 to Leroy Kipp of Hazel Green, Wisconsin. She was the third high seller at the sale that averaged over \$4500. Bathsheba has also carried on her winning ways for her new owners in the show ring. In July at the Wisconsin State Fair, she was named Intermediate and Grand Champion as a Senior 2 year old.

There remain many outstanding requests for animals of all ages throughout the entire country. The Guernsey cow is still in demand! Contact me if you have animals for sale. Also, let me know what animals in your herd that you are excited about – don't be afraid to be proud of the "Golden Girls" in your barn.

Submitted by:
Rob Forster

Canadian Guernsey Fieldman, rforster@guernseycanada.ca
905-648-9640

Canadian Guernsey's...

- Mature at a young age
- Ease of calving
- Efficiency
- Adaptability to all kinds of management
- Popular breed for cross-breeding
- Longevity
- Good temperament
- High components
- Cheese yielding milk quality
- Milk has high butterfat and protein
- Guernsey milk compared to average milk (from WGF website) has:
 - 12% more protein
 - 33% more vitamin D
 - 25% more vitamin A
 - 15% more calcium

How the Canadian Guernsey Association can help

- Sale of cattle
- Large market for embryo sales and semen purchases
- Classification and DHI information
- International marketing
- Advertising
- National Guernsey Show is held annually in Ancaster the 3rd week of September

For more information about Guernseys or the breed association, including how you can become a member, please contact our Fieldman or the office.

Rob Forster – 905-648-9640,
rforster@guernseycanada.ca

Canadian Guernsey Association
5653 Hwy 6 North, R R #5
Guelph, ON, N1H 6J2
Phone: 519-836-2141, F 519-763-6582,
E-mail: info@guernseycanada.ca
Website: www.guernseycanada.ca

Tattoo letter for 2011 is Y



Value of DHI: Today and in the Future

The first official milk recording program in Canada was established in 1904. Over the course of the past century, services provided by DHI agencies have steadily evolved to maximize their value to dairy producers across the country. As with all sectors of the industry the Canadian DHI partners (i.e.: CanWest DHI and Valacta) have been faced with various challenges that have been addressed by proactive strategic planning. Most recent examples of significant service additions include the collection of health events, milk sample analysis for Johne's disease or mastitis-causing bacteria, and various herd management services and reports. Lately, the arrival of DNA genotyping and genomic evaluations have significantly impacted the entire dairy cattle improvement industry, therefore making DHI services even more important than ever.

DHI Enrolment

Official statistics published by Agriculture & Agri-Food Canada (www.dairyinfo.gc.ca) show a 2010 total of 12,965 farms in Canada with milk shipments and a national dairy cattle population of 987,000 cows and 443,100 heifers. In terms of enrolment on DHI milk recording programs, counts for 2010 were 702,764 cows in 9,721 herds. As the number of dairy cows and herds in Canada continues to decline from year to year, a growing percentage of those remaining are on DHI, which is a testimony to the program's proven values of services delivered to producers. In fact, the percentage of herds enrolled on DHI reached 75.0% nationally in 2010, which is a significant 10% gain compared to 65.5% in 1995. Contrary to popular belief, DHI has a greater enrolment market share among larger herds compared to smaller herds. Interestingly, this trend towards increased participation in DHI programs has taken place in parallel with the withdrawal of all federal and most provincial funding support, therefore requiring dairy farmers to pay directly for all services received.

Data Collection

During the past fifteen years, the milk recording sector in Canada has been entirely revamped and streamlined. This process started with the planning and development of a single, national DHI database and data processing system, known as Vision2000. During the course of time, significant restructuring also occurred within this sector, ultimately carving today's efficient partnering between CanWest DHI and Valacta within Canadian DHI.

Simultaneous to the structural changes within the DHI sector, much effort has been placed in building effective data collection systems for use in herd management and genetic evaluation. In addition to the longstanding DHI role of collecting calving dates, production yields, component analysis and somatic cell counts, today's services are very broad-based for the benefit of all. Extensive recording of information related to calving

ease, calf survival, milking speed, milking temperament, reproduction, disposal reasons, and health events have become routine services provided to DHI herds across the country. In recent years, DHI has conducted leading-edge research to expand the value of traditional milk samples collected for each cow on test day. Currently, such services include the analysis of Milk Urea Nitrogen (MUN), a DNA-based analysis to identify the presence of mastitis-causing bacteria and a milk ELISA test for managing Johne's disease in the herd. In addition, Canadian DHI partners have plans for introducing more disease surveillance tools using milk samples in the near future.

Herd Management Services

The fundamental reason for data collection services offered by DHI is to process and analyze information for herd management. Producers must first and foremost receive value from the reports and analysis provided by DHI, which must translate into increased profits, in order for producers to voluntarily continue to enrol on DHI and pay for all services rendered. Such reports must be flexible to meet the varying needs of DHI customers regardless of herd size, milking system, housing facilities, or breeding objectives. They must also cover various areas of managing a dairy operation including reproductive performance, herd health, nutrition and feeding, dry cow transition, heifer rearing, replacement rates, cow profitability and genetic selection.

Genetic Evaluation

For decades, DHI has been a vital partner in the area of genetic evaluation, and this remains true today and in the future with genomics. Genetic selection and progress can only be achieved for traits that are recorded. Thanks to existing DHI data collection systems, the Canadian dairy cattle industry has been able to make sire selection decisions and realise genetic gains for many traits including production yields, fat and protein percentages, somatic cell, lactation persistency, longevity, fertility, calving ease, calf survival, milking speed and milking temperament. A common misconception among some people is that genomics will replace the need for traditional data recording systems such as DHI, type classification and herdbook registration. The reality, however, is that genomics will require more accurate and complete collection of data for a wider list of traits in addition to those already being recorded. An excellent example was the 2007 implementation by Canadian DHI partners of a system for recording health events associated with eight key diseases in dairy cattle. Canada has lagged behind some countries in development of genetic evaluations for disease resistance due to the absence of disease recording but is now well-positioned for the future. This recording of health events is expected to allow Canadian Dairy Network (CDN) to evaluate sires for the incidence of mastitis, lameness and various metabolic diseases in their daughters. With genomics, the accuracy of such genetic evaluations will be significantly increased and Canadian dairy producers will benefit by reducing costs associated with disease incidence.

Summary

Canadian dairy producers have access to many excellent services and tools for managing their herds to maximize profitability. A key source of such information is the DHI sector, which includes CanWest DHI for producers in Ontario and the western provinces and Valacta for Québec and the Atlantic provinces. Presently, three-quarters

of all dairy farms in Canada are enrolled on DHI and this percentage been regularly increasing. The herd owners pay for all services received and realise significant returns on this investment. The first step in making accurate management decisions and the first step in making good genetic selection decisions is to record information on individual cows across many herds. For this reason, the DHI sector has been, and will continue to be, a very critical service provider for Canadian dairy producers to be profitable and achieve their specific goals. With the arrival of DNA genotyping and genomic evaluations of males and females, the importance of DHI data collection systems and all traditional breed improvement programs will grow even further!

Author: Brian Van Doormaal, CDN and Holstein Canada
 Date: June 2011

Guernsey Pictures Required!

Once again we are looking for candid shots of your Guernsey animals. Please continue to forward the pictures by email info@guernseycanada.ca or mail a digital format of the picture on CD to the office. The submitted pictures may be used in various publications throughout the year however the winner will appear on the front cover of the next Guernsey Journal.

Committees

Breed Improvement Committee

Scott Gordon - Chairman
 Jim Eby
 Rob Forster
 Jessie Weir

Promotions Committee

Amy Lindsay – Chairman
 Jim Eby
 Marie McNabb
 Morris Bartlett
 Scott Gordon
 Rob Forster
 Jessie Weir

Representatives

CLRC, Larry Lybbert
 Global Breeding, Russell Gammon
 Fieldman, Rob Forster

“Aarons Bianca” Continues to Surge and Takes #1 LPI for Guernseys

After her outstanding debut last round, Maplehurst Aarons Bianca (#1 Fat) achieves her quest to become #1 LPI cow with a gain of 250 points this round, squeezing just ahead of the former leader, Glen Haven Lewis Lana (#2 LPI). Maplehurst Lewis Brea stays solid at #3 LPI, followed by Eby Manor Lewis Secelia (#4 LPI) and Guernsey View Kit’s Ruby (#5 LPI). Maplehurst Warden Bianca (dam of Aarons Bianca at #1 LPI) takes #6 spot this round while Maplehurst Les Volts jumps from #20 to #7 LPI. The Top 10 LPI list is completed by Calumlea Lewis Tracy (#8), Lindrian Aaron Penny One (#9) and Guernsey View Nikki’s Unity at #10 LPI, who is also the highest newly indexed cow this round. For bulls, the Top 5 LPI list remains unchanged and there are no young sire graduates this round.

World Dairy Expo Guernsey Show and Sale Schedule

Thursday, October 6

1:30 PM	International Guernsey Show - heifers (C)
7:00 PM	International Guernsey Classic Sale (SP)

Friday, October 7

7:30 AM	International Guernsey Show - cows & groups (C)
---------	---

Saturday, October 8

5:00 PM	Parade of Champions and Selection of 2011 Supreme Champions (C)
---------	---

We welcome RUSSELL GAMMON as the new Semex Guernsey Sire Analyst. Russell brings with him a strong knowledge of the industry, tremendous enthusiasm and interest in the breed.

Production Records (January - August 2011) Ranked by Composite Milk, Fat & Protein

Yearlings	GP	83	1	11	DJM	Milk	Fat	%F	Prot	%P	Milk	Fat	Prot	C-BCA	ON
1 GUCANF9612257	GP	81	1	11	318	8014	356	4.4	259	3.2	295	260	267	822 EBY MANOR LTD	ON
2 GUCANF9723792	GP	81	1	8	330	6431	309	4.8	233	3.6	247	238	251	736 JOHN & LINDA TAMIS	BC
3 GUCANF9598034	GP	81	1	11	383	6889	318	4.6	223	3.2	254	234	230	718 COMFORT FARMS LTD	ON
4 GUCANF9723787	GP	83	1	11	320	6472	309	4.8	224	3.5	240	229	233	702 JOHN & LINDA TAMIS	BC
5 GUCANF9598029	GP	83	1	11	483	7050	303	4.3	231	3.3	248	213	229	690 COMFORT FARMS LTD	ON
6 GUCANF9756136	GP	80	1	9	326	6576	319	4.8	208	3.2	238	233	212	683 KENNETH MCNABB	ON
7 GUCANF9598035	GP	80	1	11	331	6027	270	4.5	210	3.5	222	197	216	635 COMFORT FARMS LTD	ON
8 GUCANF9598024	GP	82	1	11	440	6602	259	3.9	216	3.3	224	177	206	607 COMFORT FARMS LTD	ON
9 GUCANF9589109	GP	80	1	11	355	5030	247	4.9	194	3.9	185	182	200	567 GARY WEST	NB
10 GUCANF7924820	GP	80	1	11	325	5364	250	4.7	175	3.3	199	185	182	566 CEDAR RIDGE FARMS LTD	NB
Jr. 2 Yr Old															
1 GUCANF7541897	GP	81	2	5	299	8503	410	4.8	300	3.5	293	281	291	865 JOHN & LINDA TAMIS	BC
2 GUCANF9756137	GP	81	2	1	319	7718	354	4.6	260	3.4	278	253	263	794 KENNETH MCNABB	ON
3 GUCANF9612237	G	73	2	0	321	7941	374	4.7	261	3.3	276	260	253	789 EBY MANOR LTD	ON
4 GUCANF9612229	VG	85	2	3	460	8787	362	4.1	288	3.3	284	235	262	781 EBY MANOR LTD	ON
5 GUCANF8958962	G	74	2	4	426	8824	363	4.1	301	3.4	281	231	269	781 JOHN & LARRY WIGHAM	BC
6 GUCANF7924811	GP	83	2	4	339	8277	368	4.5	276	3.3	273	242	256	771 CEDAR RIDGE FARMS LTD	NB
7 GUCANF942305	GP	84	2	0	397	7835	320	4.1	246	3.1	278	225	246	749 KEN D FORSTER	ON
8 GUCANF9668875	GP	82	2	5	315	8438	334	4	258	3.1	283	221	243	747 EBY LAWN FARM	ON
9 GUCANF9863485	GP	82	2	2	336	7276	356	4.9	255	3.5	243	239	238	720 CEDAR RIDGE FARMS LTD	NB
10 GUCANF9594161	GP	83	2	2	370	7337	304	4.1	230	3.1	263	216	232	711 ROBERT FORSTER	ON
Jr. 2 Yr Old															
1 GUCANF7860499	G	78	2	11	369	7702	385	5	257	3.3	247	244	232	723 KEVIN HIGGS	BC
2 GUCANF7911219	G	76	2	10	409	8620	342	4	288	3.3	264	210	248	722 KENNETH MCNABB	ON
3 GUCANF7924799	GP	82	2	8	622	8057	326	4	246	3	265	213	228	706 CEDAR RIDGE FARMS LTD	NB
4 GUCANF9589086	GP	82	2	9	307	7280	319	4.4	246	3.4	245	211	232	688 GARY WEST	NB
5 GUCANF7433766	VG	86	2	7	770	7198	306	4.2	234	3.2	236	199	215	650 KEN D FORSTER	ON
6 GUCANF7433780	VG	86	2	6	483	6837	301	4.4	241	3.5	217	191	215	623 KEN D FORSTER	ON
7 GUCANF7868048	GP	83	2	6	567	6402	301	4.7	205	3.2	211	197	190	598 ROB BEYNON	ON
8 GUCANF9668132	G	74	2	8	338	5856	272	4.6	212	3.6	199	183	202	584 WANAMAKER BROTHERS	NB
9 GUCANF7897032	G	77	2	10	384	6221	307	4.9	221	3.5	188	185	187	560 WANAMAKER BROTHERS	NB
10 GUCANF7924809	G	76	2	7	320	5741	250	4.3	194	3.4	194	168	185	547 CEDAR RIDGE FARMS LTD	NB
Jr. 3 Yr Old															
1 GUCANF7924798	GP	83	3	2	435	8855	437	4.9	300	3.4	264	257	252	773 CEDAR RIDGE FARMS LTD	NB
2 GUCANF8860689	GP	81	3	3	321	7057	368	5.2	262	3.7	219	226	230	675 EBY MANOR LTD	ON
3 GUCANF8860688	VG	85	3	2	352	7318	344	4.7	259	3.5	226	210	225	661 ALAN SPENCE	ON
4 GUCANF9612221	VG	87	3	3	330	6754	307	4.5	250	3.7	216	192	225	633 EBY MANOR LTD	ON
5 GUCANF8860679	G	78	3	5	317	6904	372	5.4	256	3.7	203	218	212	633 EBY MANOR LTD	ON
6 GUCANF7645056	G	75	3	4	396	8491	311	3.7	246	2.9	247	181	200	628 COMFORT FARMS LTD	ON
7 GUCANF8860694	GP	81	3	1	310	6152	333	5.4	258	4.2	192	204	226	622 EBY MANOR LTD	ON
8 GUCANF8979106	VG	85	3	1	297	6411	309	4.8	230	3.6	206	197	208	611 JOHN W GORDON	ON
9 GUCANF7433775	GP	82	3	3	338	6530	326	5	245	3.8	201	198	211	610 KEN D FORSTER	ON
10 GUCANF9589078	GP	82	3	4	327	6462	299	4.6	227	3.5	206	186	203	595 GARY WEST	NB

BEAVERWOOD CHALLENGE'S TIFFANY

Production Records (January - August 2011) Ranked by Composite Milk, Fat & Protein

Sr.	3 Yr Old	GP	80	3	10	330	9427	396	4.2	314	3.3	291	239	273	803 GARY WEST	ON
1	GUCANF7703651	GP	80	3	10	330	9427	396	4.2	314	3.3	291	239	273	803 GARY WEST	ON
2	GUCANF7645055	GP	80	3	6	404	9626	372	3.9	299	3.1	278	214	243	735 COMFORT FARMS LTD	ON
3	GUCANF9589068	GP	80	3	7	330	7445	362	4.9	283	3.8	233	222	248	703 GARY WEST	ON
4	GUCANF7703654	GP	80	3	6	388	7847	376	4.8	284	3.6	236	224	241	701 GARY WEST	ON
5	GUCANF7433767	VG	85	3	8	339	7035	339	4.8	233	3.3	212	202	197	611 KEN D FORSTER	ON
6	GUCANF7868036	VG	85	3	6	330	7184	281	3.9	219	3	224	173	192	589 ROB BEYNON	ON
7	GUCANF7703648	G	70	3	8	283	6471	274	4.2	219	3.4	200	167	190	577 GARY WEST	ON
8	GUCANF7897021	GP	84	3	10	446	5885	291	4.9	212	3.6	168	163	170	557 WANAMAKER BROTHERS	ON
9	GUCANF7665526	GP	80	3	10	289	5490	202	3.7	167	3	170	122	145	501 WANAMAKER BROTHERS	ON
10	GUCANF7868032	GP	80	3	10	289	5490	202	3.7	167	3	170	122	145	437 ROB BEYNON	ON
4 Yr Old																
1	GUCANF7541808	GP	81	4	6	331	10712	547	5.1	394	3.7	291	297	301	889 JOHN & LINDA TAMIS	BC
2	GUCANF7541807	GP	80	4	6	344	11477	523	4.6	374	3.3	310	283	283	876 JOHN & LINDA TAMIS	BC
3	GUCANF8508431	GP	81	4	6	446	9695	465	4.8	293	3	264	253	224	741 CEDAR RIDGE FARMS LTD	BC
4	GUCANF7703639	GP	81	4	5	294	8751	372	4.2	293	3.4	265	221	248	734 GARY WEST	BC
5	GUCANF8860671	VG	85	4	1	332	8124	395	4.9	282	3.5	245	235	239	719 EBY MANOR LTD	ON
6	GUCANF8821449	G	77	4	6	483	9171	387	4.2	325	3.5	253	214	252	719 EBY MANOR LTD	ON
7	GUCANF7388494	GP	80	4	7	306	8157	394	4.8	299	3.7	241	230	247	718 GLEN HAVEN FARMS	ON
8	GUCANF7433745	GP	80	4	4	310	8021	427	5.3	267	3.3	230	243	215	688 KEN D FORSTER	ON
9	GUCANF7433718	EX	90	4	9	650	8903	371	4.2	284	3.2	253	207	227	687 KEN D FORSTER	ON
10	GUCANF7703633	GP	84	4	2	390	8609	375	4.4	302	3.5	238	207	234	679 GARY WEST	ON
5 Yr Old																
1	GUCANF7477267	GP	82	5	4	313	8657	438	5.1	316	3.6	253	253	259	765 KENNETH MCNABB	ON
2	GUCANF8818398	GP	81	5	2	373	9665	378	3.9	308	3.2	278	217	248	743 COMFORT FARMS LTD	ON
3	GUCANF7703617	GP	81	5	2	388	8910	364	4.1	309	3.5	252	206	245	703 CEDAR RIDGE FARMS LTD	ON
4	GUCANF8676623	VG	87	5	3	358	8736	389	4.5	294	3.4	230	206	218	654 ALAN SPENCE	ON
5	GUCANF8818383	GP	81	5	11	320	8270	359	4.3	275	3.3	231	201	215	647 COMFORT FARMS LTD	ON
6	GUCANF8860634	VG	85	5	4	353	7326	401	5.5	269	3.7	206	225	213	644 EBY MANOR LTD	ON
7	GUCANF7703602	VG	86	5	2	428	8593	348	4	296	3.4	226	185	219	630 GARY WEST	ON
8	GUCANF7703613	GP	82	5	6	336	7363	336	4.6	260	3.5	216	196	215	627 GARY WEST	ON
9	GUCANF7545452	EX	90	5	3	315	7656	406	5.3	263	3.4	206	219	199	624 JOHN W GORDON	ON
10	GUCANF8818363	EX	90	5	6	748	7870	368	4.7	281	3.6	211	198	211	620 COMFORT FARMS LTD	ON
Mature Cow																
1	GUCANF8818359	VG	85	6	11	421	9507	428	4.5	311	3.3	258	235	237	730 COMFORT FARMS LTD	ON
2	GUCANF8486455	GP	80	7	8	371	8653	350	4	302	3.5	242	199	236	677 GARY WEST	ON
3	GUCANF8818358	GP	81	6	10	484	9319	401	4.3	288	3.1	242	212	210	664 COMFORT FARMS LTD	ON
4	GUCANF10034083	EX	90	9	5	441	9158	356	3.9	272	3	238	195	199	632 KEN D FORSTER	ON
5	GUCANF8531568	VG	88	6	10	351	8141	328	4	280	3.4	226	184	219	629 ROBERT FORSTER	ON
6	GUCANF8486453	GP	83	7	10	347	7650	310	4	277	3.6	219	181	223	623 GARY WEST	ON
7	GUCANF8508417	GP	83	6	5	415	7715	392	5.1	257	3.3	210	215	196	621 CEDAR RIDGE FARMS LTD	ON
8	GUCANF8531557	EX	90	6	9	535	9142	334	3.6	290	3.2	235	175	210	620 KEN D FORSTER	ON
9	GUCANF8508382	GP	80	7	8	347	7886	369	4.7	255	3.2	215	205	195	615 COMFORT FARMS LTD	ON
10	GUCANF7359449	VG	87	6	1	310	7500	357	4.8	274	3.6	205	196	211	612 KEN D FORSTER	ON
Aged Cow																
1	GUCANF10033541	VG	85	10	1	392	6782	380	5.6	246	3.6	180	212	184	576 CEDAR RIDGE FARMS LTD	ON
2	GUCANF10032724	EX	92	11	6	391	5295	230	4.3	179	3.4	154	142	147	443 EBY MANOR LTD	ON

CANADIAN DAIRY NETWORK (CDN) RESEAU LAITIER CANADIEN

TOP LPI BULL REPORT / RAPPORT DES MEILLEURS TAUREAUX SELON L'IPV

BREED/RACE: GUERNSEY

RANK	LPI RK TC A. I. CODE NUMBER	NAME	HERDS	DAUS	TDR REL	MILK RK	FAT RK	PROT RK	RC	FAT%	PROT%	PERS	SCS	CONF	RK	HL	DF	§	
																		DV	FF
RANG	IPV RC CT CODE NUMERO	NOM	TROUP FILLES		RJT FIAB	LAIT RC	GRAS RC	PROT RC	GRAS	PROT	PERS	SCS	CONF	RC					
1	1318 99 D 007GU00366 603342	TROTACRE ENHANCER LEWIS ET Lactation 1 Lactation 2 Lactation 3	14	34	586 82	989 99	32 92	25 84	-0.13	-0.10	107 2.90	2 64	MS/SM	1 103	110	MSP/VT	102		
					277 83	932 37	25	-0.07	-0.10	108 2.98		FL/PM	6	MT/TT	97				
					182 80	950 27	23	-0.14	-0.11	101 3.00		DS/PL	-1	CA/AV	105				
					127 78	1054 28	26	-0.16	-0.10	106 2.71		UD/PP	3D	DCA/AFV	105				
2	1035 99 D 200GU00001 10027474	ROZELYN ENHANCER JORDAN ET Lactation 1 Lactation 2 Lactation 3	18	23	416 76	583 69	37 92	23 84	0.18	0.05	105 3.26	-1 30	MS/SM	-1 105	108	MSP/VT	108		
					180 75	518 37	20	0.15	0.01	103 3.25		FL/PM	-2	MT/TT	99				
					124 72	350 28	18	0.22	0.09	103 3.33		DS/PL	-6	CA/AV	102				
					112 70	690 39	26	0.18	0.05	106 3.22		UD/PP	1D	DCA/AFV	105				
3	960 99 D 200GU00109 604312	PINE RIDGE DOUBLE L-ET Lactation 1 Lactation 2 Lactation 3	24	52	817 86	210 46	31 92	8 53	0.33	0.02	104 2.58	5 89	MS/SM	9 110	94	MSP/VT	107		
					402 86	271 36	7	0.30	-0.03	102 2.65		FL/PM	0	MT/TT	96				
					205 84	193 31	10	0.37	0.05	105 2.63		DS/PL	-5	CA/AV	94				
					210 83	118 27	7	0.33	0.04	104 2.47		UD/PP	6S	DCA/AFV	100				
4	950 99 D 200GU00111 604588	MYOWN POKER BINGO-ET Lactation 1 Lactation 2 Lactation 3	10	20	402 76	858 99	51 99	31 99	0.20	0.00	98 2.93	-5 14	MS/SM	-3 103	97	MSP/VT	103		
					168 75	1186 67	39	0.14	-0.05	92 2.90		FL/PM	-1	MT/TT	103				
					134 73	821 47	30	0.23	0.04	104 3.06		DS/PL	-1	CA/AV	105				
					100 71	510 35	19	0.23	0.02	102 2.82		UD/PP	5D	DCA/AFV	99				
5	796 90 D 200GU00401 604747	MILLBORNE BOLERO Lactation 1 Lactation 2 Lactation 3	17	37	652 82	618 76	20 84	10 61	-0.08	-0.15	103 2.75	7 92	MS/SM	6 105	100	MSP/VT	96		
					292 82	691 25	10	-0.09	-0.18	103 2.72		FL/PM	1	MT/TT	92				
					212 80	703 18	12	-0.14	-0.15	105 2.66		DS/PL	4	CA/AV	97				
					148 78	443 15	5	-0.02	-0.12	98 2.87		UD/PP	7S	DCA/AFV	98				
6	760 80 D 028GU00123 20223	BEY MANOR BUTTERMOST WARDEN Lactation 1 Lactation 2 Lactation 3	47	144	2245 94	-428 23	24 92	-1 23	0.62	0.19	105 2.96	4 79	MS/SM	-1 103	109	MSP/VT	99		
					1046 94	-664 16	-6	0.63	0.23	101 3.03		FL/PM	7	MT/TT	98				
					694 94	-336 25	2	0.61	0.20	105 2.99		DS/PL	2	CA/AV	102				
					505 93	-285 30	2	0.62	0.15	108 2.86		UD/PP	3D	DCA/AFV	107				
7	721 80 D 200GU00400 10032765	KNAPPS ENHANCER KRUNCH-ET Lactation 1 Lactation 2 Lactation 3	17	37	588 82	281 69	41 92	16 76	0.42	0.08	106 2.98	-1 30	MS/SM	3 100	99	MSP/VT	111		
					268 82	394 43	15	0.31	0.00	100 3.18		FL/PM	0	MT/TT	102				
					172 80	167 35	14	0.45	0.12	107 2.95		DS/PL	-8	CA/AV	109				
					148 77	291 45	18	0.50	0.11	111 2.81		UD/PP	0	DCA/AFV	95				
8	716 80 I 007GU00302 600974	ROZELYN FAT MAR P GOLIATH ET Lactation 1 Lactation 2 Lactation 3	23	52	992 88	-40 30	20 84	5 53	0.31	0.08	104 2.87	-7 0	MS/SM	-3 111	111	MSP/VT	107		
					405 88	-207 15	1	0.32	0.11	104 2.88		FL/PM	-7	MT/TT	108				
					303 87	-100 15	2	0.30	0.07	104 2.87		DS/PL	-9	CA/AV	107				
					284 86	206 29	11	0.31	0.06	104 2.87		UD/PP	2S	DCA/AFV	107				
9	605 80 D 001GU00400 10034580	MYOWN MAGIC POKER Lactation 1 Lactation 2 Lactation 3	9	31	514 81	691 76	28 92	22 84	-0.01	-0.01	104 2.68	-7 0	MS/SM	-3 105	97	MSP/VT	109		
					243 81	1039 45	33	-0.04	-0.06	102 2.85		FL/PM	-1	MT/TT	110				
					172 79	601 29	22	0.08	0.04	105 2.68		DS/PL	-8	CA/AV	106				
					99 76	548 15	17	-0.07	-0.01	104 2.50		UD/PP	3D	DCA/AFV	100				
10	507 80 I 007GU00360 603341	TROTACRE LORAL TILLER ET Lactation 1 Lactation 2 Lactation 3	19	60	820 87	437 69	14 61	11 69	-0.06	-0.06	98 2.98	4 79	MS/SM	2 100	99	MSP/VT	96		
					422 88	703 24	19	-0.10	-0.08	95 3.05		FL/PM	8	MT/TT	96				
					248 86	339 9	9	-0.07	-0.03	98 2.91		DS/PL	3	CA/AV	96				
					150 83	262 9	4	-0.01	-0.05	103 2.97		UD/PP	1D	DCA/AFV	97				

CANADIAN DAIRY NETWORK (CDN) RESEAU LAITIER CANADIEN

AUGUST 2011 PA

TOP LFI BULL REPORT / RAPPORT DES MEILLEURS TAUREAUX SELON L'IPV

BREED/RACE: GUERNSEY

RANK	LPI RK TC A.I. CODE NUMBER	NAME	HERDS	DAUS	TDR REL	MILK RK	FAT RK	PROT RK	FAT% PROT	PERCENT	SCS	CONF	RK	HL	DF
RANG	IPV RC CT CODE NUMERO	NOM	TROUP FILLES	FILLES	RELAIS	LAIT RC	GRAS RC	PROT RC	GRAS	PROT	CCS	CONF	RC	DV	PF
1	1318 99 D 007GU00366 603342	TROTACRE ENHANCER LEWIS ET Lactation 1 Lactation 2 Lactation 3	14	34	586 82	989 99	32 92	25 84	-0.13	-0.10	107 2.90	2 64	MS/SM	1 103	110 MSF/VT 102
					277 83	932	37	25	-0.07	-0.10	108 2.98		FL/PM	6	MT/TT 97
					182 80	950	27	23	-0.14	-0.11	101 3.00		DS/PL	-1	CA/AV 105
					127 78	1054	28	26	-0.16	-0.10	106 2.71		UD/PP	3D	DCA/AFV 105
2	1035 99 D 200GU00001 10027474	ROZELYN ENHANCER JORDAN ET Lactation 1 Lactation 2 Lactation 3	18	23	416 76	583 69	37 92	23 84	0.18	0.05	105 3.26	-1 30	MS/SM	-1 105	108 MSF/VT 108
					180 75	518	37	20	0.15	0.01	103 3.25		FL/PM	-2	MT/TT 99
					124 72	350	28	18	0.22	0.09	103 3.33		DS/PL	-6	CA/AV 102
					112 70	690	39	26	0.18	0.05	106 3.22		UD/PP	1D	DCA/AFV 105
3	960 99 D 200GU00109 604312	PINE RIDGE DOUBLE L-ET Lactation 1 Lactation 2 Lactation 3	24	52	817 86	210 46	31 92	8 53	0.33	0.02	104 2.58	5 89	MS/SM	9 110	94 MSF/VT 107
					402 86	271	36	7	0.30	-0.03	102 2.65		FL/PM	0	MT/TT 96
					205 84	193	31	10	0.37	0.05	105 2.63		DS/PL	-5	CA/AV 94
					210 83	118	27	7	0.33	0.04	104 2.47		UD/PP	6S	DCA/AFV 100
4	950 99 D 200GU00111 604588	MYOWN POKER BINGO-ET Lactation 1 Lactation 2 Lactation 3	10	20	402 76	858 99	51 99	31 99	0.20	0.00	98 2.93	-5 14	MS/SM	-3 103	97 MSF/VT 103
					168 75	1186	67	39	0.14	-0.05	92 2.90		FL/PM	-1	MT/TT 103
					134 73	821	47	30	0.23	0.04	104 3.06		DS/PL	-1	CA/AV 105
					100 71	510	35	19	0.23	0.02	102 2.82		UD/PP	5D	DCA/AFV 99
5	796 90 D 200GU00401 604747	MILLBORNE BOLERO Lactation 1 Lactation 2 Lactation 3	17	37	652 82	618 76	20 84	10 61	-0.08	-0.15	103 2.75	7 92	MS/SM	6 105	100 MSF/VT 96
					292 82	691	25	10	-0.09	-0.18	103 2.72		FL/PM	1	MT/TT 92
					212 80	703	18	12	-0.14	-0.15	105 2.66		DS/PL	4	CA/AV 97
					148 78	443	15	5	-0.02	-0.12	98 2.87		UD/PP	7S	DCA/AFV 98
6	760 80 D 028GU00123 20223	EBY MANOR BUTTERMOST WARDEN Lactation 1 Lactation 2 Lactation 3	47	144	2245 94	-428 23	24 92	-1 23	0.62	0.19	105 2.96	4 79	MS/SM	-1 103	109 MSF/VT 99
					1046 94	-664	16	-6	0.63	0.23	101 3.03		FL/PM	7	MT/TT 98
					694 94	-336	25	2	0.61	0.20	105 2.99		DS/PL	2	CA/AV 102
					505 93	-285	30	2	0.62	0.15	108 2.86		UD/PP	3D	DCA/AFV 107
7	721 80 D 200GU00400 10032765	KNAPPS ENHANCER KRUNCH-ET Lactation 1 Lactation 2 Lactation 3	17	37	588 82	281 69	41 92	16 76	0.42	0.08	106 2.98	-1 30	MS/SM	3 100	99 MSF/VT 111
					268 82	394	43	15	0.31	0.00	100 3.18		FL/PM	0	MT/TT 102
					172 80	167	35	14	0.45	0.12	107 2.95		DS/PL	-8	CA/AV 109
					148 77	291	45	18	0.50	0.11	111 2.81		UD/PP	0	DCA/AFV 95
8	716 80 I 007GU00302 600974	ROZELYN PAT MAR P GOLLATH ET Lactation 1 Lactation 2 Lactation 3	23	52	992 88	-40 30	20 84	5 53	0.31	0.08	104 2.87	-7 0	MS/SM	-3 111	111 MSF/VT 107
					405 88	-207	15	1	0.32	0.11	104 2.88		FL/PM	-7	MT/TT 108
					303 87	-100	15	2	0.30	0.07	104 2.87		DS/PL	-9	CA/AV
					284 86	206	29	11	0.31	0.06	104 2.87		UD/PP	2S	DCA/AFV 107
9	605 80 D 001GU00400 10034580	MYOWN MAGIC POKER Lactation 1 Lactation 2 Lactation 3	9	31	514 81	691 76	28 92	22 84	-0.01	-0.01	104 2.68	-7 0	MS/SM	-3 105	97 MSF/VT 109
					243 81	1039	45	33	0.04	-0.06	102 2.85		FL/PM	-1	MT/TT 110
					172 79	601	29	22	0.08	0.04	105 2.68		DS/PL	-8	CA/AV 106
					99 76	548	15	17	-0.07	-0.01	104 2.50		UD/PP	3D	DCA/AFV 100
10	507 80 I 007GU00360 603341	TROTACRE IORAL TILLER ET Lactation 1 Lactation 2 Lactation 3	19	60	820 87	437 69	14 61	11 69	-0.06	-0.06	98 2.98	4 79	MS/SM	2 100	99 MSF/VT 96
					422 88	703	24	19	-0.10	-0.08	95 3.05		FL/PM	8	MT/TT 96
					248 86	339	9	9	-0.07	-0.03	98 2.91		DS/PL	3	CA/AV 96
					150 83	262	9	4	-0.01	-0.05	103 2.97		UD/PP	1D	DCA/AFV 97



Provincial and National Averages Used as Benchmarks for Genetic Herd Inventory Reports
Moyennes provinciales et nationales à titre de point de repère pour les rapports d'inventaire génétique du troupeau

Breed: Guernsey - August 2011 / Août 2011 - **Race: Guernsey**

Province	All Active Cows / Toutes les Vaches Actives													
	No. Cows	% Inbreeding	Milk	Fat	Protein	% Fat	% Protein	SCS	CONF	Mammary System	Feet & Legs	Dairy Strength	Rump	LPI
	No. Vaches	% Consanguinité	Lait	Gras	Protéine	% Gras	% Protéine	CCS		Système mammaire	Pieds & membres	Puissance laitière	Croupe	IPV
NB	104	6.37	41	2.4	1.4	0.01	0.00	2.96	0.6	0.8	0.7	-1.1	0.5	133
QC	10	3.16	397	11.1	11.9	-0.07	-0.02	2.95	0.6	1.7	0.0	-1.5	-2.0	387
ON	282	6.37	131	7.7	5.5	0.04	0.02	2.98	1.2	1.0	0.8	0.1	0.9	219
AB	2	8.95	298	3.0	9.5	-0.13	-0.01	3.10	-0.5	-3.5	1.5	3.5	-3.0	-176
BC/CB	14	5.75	258	11.1	7.6	0.01	-0.01	2.85	3.6	3.3	2.4	1.5	1.6	532
CANADA	412	6.29	120	6.5	4.7	0.03	0.01	2.98	1.1	1.0	0.8	-0.2	0.7	210

Province	Active Cows With Publishable Production Indexes / Vaches Actives avec Indices de Production Publiables													
	No. Cows	% Inbreeding	Milk	Fat	Protein	% Fat	% Protein	SCS	CONF	Mammary System	Feet & Legs	Dairy Strength	Rump	LPI
	No. Vaches	% Consanguinité	Lait	Gras	Protéine	% Gras	% Protéine	CCS		Système mammaire	Pieds & membres	Puissance laitière	Croupe	IPV
NB	90	6.41	51	2.5	1.8	0.01	0.00	2.97	0.6	0.5	0.6	-0.9	0.7	137
QC	9	3.03	440	11.1	13.1	-0.09	-0.02	2.97	0.3	1.2	0.1	-1.4	-1.3	384
ON	242	6.38	152	8.7	6.2	0.04	0.02	3.00	1.0	0.9	0.5	-0.1	0.8	233
AB	0	---	---	---	---	---	---	---	---	---	---	---	---	---
BC/CB	14	5.75	258	11.1	7.6	0.01	-0.01	2.85	3.6	3.3	2.4	1.5	1.6	532
CANADA	355	6.28	138	7.3	5.3	0.03	0.01	2.98	1.0	0.9	0.6	-0.3	0.7	224

Province	Active Cows With Unpublishable Production Indexes / Vaches Actives avec Indices de Production Non-Publiables													
	No. Cows	% Inbreeding	Milk	Fat	Protein	% Fat	% Protein	SCS	CONF	Mammary System	Feet & Legs	Dairy Strength	Rump	LPI
	No. Vaches	% Consanguinité	Lait	Gras	Protéine	% Gras	% Protéine	CCS		Système mammaire	Pieds & membres	Puissance laitière	Croupe	IPV
NB	14	6.08	-25	1.2	-1.0	0.03	0.00	2.90	1.0	2.1	1.2	-2.4	-1.1	111
QC	1	4.30	9	11.0	1.0	0.16	0.01	2.78	3.0	6.0	-1.0	-2.0	-8.0	413
ON	40	6.32	3	1.5	1.1	0.02	0.01	2.99	2.4	1.6	2.1	1.4	1.6	130
AB	2	8.95	298	3.0	9.5	-0.13	-0.01	3.10	-0.5	-3.5	1.5	3.5	-3.0	-176
BC/CB	0	---	---	---	---	---	---	---	---	---	---	---	---	---
CANADA	57	6.32	6	1.6	0.9	0.02	0.01	2.97	1.9	1.6	1.8	0.5	0.6	120



HEIFER PARENT AVERAGES AND OTHER INFORMATION / MOTENNES DES PARENTS DES GENESSES ET D'AUTRES RENSEIGNEMENTS

TOP 50 GUERNSEY HEIFERS BY LPI PARENT AVERAGE (PALPI) - AUGUST 2011 GENETIC EVALUATIONS

50 MEILLEURES GENESSES GUERNSEY SELON LA MOYENNE DES PARENTS POUR L'IPV (IPV WP) - ÉVALUATIONS GÉNÉTIQUES AOÛT 2011

HEIFER PARENT AVERAGES AND OTHER INFORMATION / MOTENNES DES PARENTS DES GENESSES ET D'AUTRES RENSEIGNEMENTS		HEIFER PARENT AVERAGE (PALPI) - AUGUST 2011 GENETIC EVALUATIONS		50 MEILLEURES GENESSES GUERNSEY SELON LA MOYENNE DES PARENTS POUR L'IPV (IPV WP) - ÉVALUATIONS GÉNÉTIQUES AOÛT 2011		SIRE INFORMATION / RENSEIGNEMENTS DU PÈRE		SEMEN CODE DE SÉQUENCE		DAM INFORMATION / RENSEIGNEMENTS DE LA MÈRE														
RANK	LPV	REGISTRATION	NAME	BIRTH DATE	AGE	MLK LAIT	FAT	PROTEIN	%FAT	%PROT	CS	CONF	MS	FALL	DIS	PL	RR	REGISTRATION	NAME	LPV	REGISTRATION	NAME	LPV	
RANK	IPV	ENREGISTREMENT	NOM	NAISSANCE	ÂGE	LAIT	GRAS	PROTÉINE	GRAS	PROTÉINE	CS	CONF	MS	FALL	DIS	PL	RR	ENREGISTREMENT	NOM	IPV	ENREGISTREMENT	NOM	IPV	
1	1577	CAN 963485	GUERNSEY VIEW BREA'S WORTHY	14-Jul-09	25	1145	47	35	-0.03	-0.06	2.86	5	3	8	1	0	3	USA 60470	SNIDERS OPTION ARRON-ET	1552	M	CAN 7433732	MAPLEHURST LEWIS BREA	1561
2	1533	CAN 9612272	EBY MANOR AARON SAMANTHA	08-May-09	27	819	45	26	0.14	-0.03	2.85	6	5	11	3	0	3	USA 60470	SNIDERS OPTION ARRON-ET	1552	M	CAN 883662	EBY MANOR LEWIS SECELA	1513
3	1347	CAN 10913634	BROWNIE AARON WADE	11-Sep-09	23	1058	54	27	0.29	0.00	2.98	6	3	10	3	2	4	USA 60470	SNIDERS OPTION ARRON-ET	1552	M	USA 8808960	FROSTED BEAUTY HILLPOINT JEWEL	1513
4	1318	CAN 11120508	EBY MANOR AARON WADE	22-Oct-10	10	1054	58	30	0.17	-0.08	3.02	5	3	10	3	2	4	USA 60470	SNIDERS OPTION ARRON-ET	1552	M	CAN 9612264	EBY MANOR AARON WADEY	1094
5	1276	CAN 10941346	GUERNSEY VIEW MISSY'S EXTREME	19-Mar-10	17	860	43	22	0.23	0.01	2.82	5	3	8	-1	2	2	USA 60470	SNIDERS OPTION ARRON-ET	1552	M	CAN 8504408	GUERNSEY VIEW KRIS MISSY	999
6	1243	CAN 11259746	GUERNSEY VIEW MISSY'S YIPPEE	25-Apr-11	3	606	44	23	0.23	0.01	2.82	5	3	8	-1	2	2	USA 60470	SNIDERS OPTION ARRON-ET	1552	M	CAN 8504408	GUERNSEY VIEW KRIS MISSY	999
7	1243	CAN 11259746	GUERNSEY VIEW MISSY'S YIPPEE	25-Apr-11	3	606	44	23	0.23	0.01	2.82	5	3	8	-1	2	2	USA 60470	SNIDERS OPTION ARRON-ET	1552	M	CAN 8504408	GUERNSEY VIEW KRIS MISSY	999
8	1221	CAN 10983387	COMFORT FARMS MYA	04-Jun-11	7	824	30	21	-0.09	-0.10	3.00	10	6	10	5	7	7	USA 60470	SNIDERS OPTION ARRON-ET	1552	M	CAN 7924811	GUERNSEY VIEW ROYAL'S TREAT	934
9	1180	CAN 10282525	COMFORT FARMS MYA	04-Jun-11	7	824	30	21	-0.09	-0.10	3.00	10	6	10	5	7	7	USA 60470	SNIDERS OPTION ARRON-ET	1552	M	CAN 8598023	COMFORT FARMS MISS ROGERS	889
10	1180	CAN 10282525	COMFORT FARMS MYA	04-Jun-11	7	824	30	21	-0.09	-0.10	3.00	10	6	10	5	7	7	USA 60470	SNIDERS OPTION ARRON-ET	1552	M	CAN 8598023	COMFORT FARMS MISS ROGERS	889
11	1170	CAN 11259741	BIG SPRING LEWIS JAMACIA	09-Mar-10	17	1085	29	29	-0.22	-0.08	2.92	0	-1	6	-2	-1	2	USA 60342	TROTACRE ENHANCER LEWIS ET	1552	M	CAN 7879897	BIG SPRING LANE JULIE	1004
12	1147	CAN 11259741	BIG SPRING LEWIS JAMACIA	09-Mar-10	17	1085	29	29	-0.22	-0.08	2.92	0	-1	6	-2	-1	2	USA 60342	TROTACRE ENHANCER LEWIS ET	1552	M	CAN 7879897	BIG SPRING LANE JULIE	1004
13	1127	CAN 9853498	GUERNSEY VIEW JANE'S VASMEEN	25-Mar-09	28	533	35	17	0.15	-0.02	2.81	6	5	4	1	2	2	USA 60470	SNIDERS OPTION ARRON-ET	1552	M	CAN 863474	MAPLEHURST GOLDEN/BIANCA	797
14	1112	CAN 10941352	GUERNSEY VIEW JANE'S VASMEEN	25-Mar-09	28	533	35	17	0.15	-0.02	2.81	6	5	4	1	2	2	USA 60470	SNIDERS OPTION ARRON-ET	1552	M	CAN 7433739	MAPLEHURST GOLDEN/BIANCA	797
15	1112	CAN 10941352	GUERNSEY VIEW JANE'S VASMEEN	25-Mar-09	28	533	35	17	0.15	-0.02	2.81	6	5	4	1	2	2	USA 60470	SNIDERS OPTION ARRON-ET	1552	M	CAN 7433739	MAPLEHURST GOLDEN/BIANCA	797
16	1112	CAN 10941352	GUERNSEY VIEW JANE'S VASMEEN	25-Mar-09	28	533	35	17	0.15	-0.02	2.81	6	5	4	1	2	2	USA 60470	SNIDERS OPTION ARRON-ET	1552	M	CAN 7433739	MAPLEHURST GOLDEN/BIANCA	797
17	1102	CAN 10941352	GUERNSEY VIEW JANE'S VASMEEN	25-Mar-09	28	533	35	17	0.15	-0.02	2.81	6	5	4	1	2	2	USA 60470	SNIDERS OPTION ARRON-ET	1552	M	CAN 7433739	MAPLEHURST GOLDEN/BIANCA	797
18	1099	CAN 10941352	GUERNSEY VIEW JANE'S VASMEEN	25-Mar-09	28	533	35	17	0.15	-0.02	2.81	6	5	4	1	2	2	USA 60470	SNIDERS OPTION ARRON-ET	1552	M	CAN 7433739	MAPLEHURST GOLDEN/BIANCA	797
19	1084	CAN 9598055	COMFORT FARMS ASHTON	15-Sep-09	24	882	34	23	0.06	-0.02	2.97	7	6	5	3	2	2	USA 60470	SNIDERS OPTION ARRON-ET	1552	M	CAN 8598023	COMFORT FARMS MISS ROGERS	889
20	1084	CAN 9598055	COMFORT FARMS ASHTON	15-Sep-09	24	882	34	23	0.06	-0.02	2.97	7	6	5	3	2	2	USA 60470	SNIDERS OPTION ARRON-ET	1552	M	CAN 8598023	COMFORT FARMS MISS ROGERS	889
21	1059	CAN 9612277	EBY MANOR YOGI SUMMER	23-Jun-09	20	437	18	14	0.04	-0.03	3.01	5	3	7	1	2	2	USA 60342	TROTACRE ENHANCER LEWIS ET	1552	M	CAN 8598023	COMFORT FARMS MISS ROGERS	889
22	1051	CAN 10913643	EBY MANOR YOGI WICKIE	12-Dec-09	20	434	28	13	0.14	-0.03	3.01	5	3	7	1	2	2	USA 60342	TROTACRE ENHANCER LEWIS ET	1552	M	CAN 8598023	COMFORT FARMS MISS ROGERS	889
23	1038	CAN 10941344	GUERNSEY VIEW ROBERTS EXPERT	10-Feb-10	18	804	47	22	0.16	-0.08	2.81	5	3	7	2	3	3	USA 60470	SNIDERS OPTION ARRON-ET	1552	M	CAN 888621	EBY MANOR WARDEN BELLESTE	798
24	1035	CAN 1126501	EBY MANOR LEWIS KATIE	19-Aug-10	12	1211	37	30	-0.20	-0.16	3.09	1	0	2	2	1	0	USA 60342	TROTACRE ENHANCER LEWIS ET	1552	M	CAN 888621	EBY MANOR WARDEN BELLESTE	798
25	1014	CAN 9854249	GUERNSEY VIEW ULTIMATE'S EXILE	06-Jul-10	13	587	40	28	0.18	0.11	3.10	2	4	1	0	-1	0	USA 60342	TROTACRE ENHANCER LEWIS ET	1552	M	CAN 9612257	EBY MANOR AARON KATE	1042
26	1014	CAN 9854249	GUERNSEY VIEW ULTIMATE'S EXILE	06-Jul-10	13	587	40	28	0.18	0.11	3.10	2	4	1	0	-1	0	USA 60342	TROTACRE ENHANCER LEWIS ET	1552	M	CAN 9612257	EBY MANOR AARON KATE	1042
27	1014	CAN 9854249	GUERNSEY VIEW ULTIMATE'S EXILE	06-Jul-10	13	587	40	28	0.18	0.11	3.10	2	4	1	0	-1	0	USA 60342	TROTACRE ENHANCER LEWIS ET	1552	M	CAN 9612257	EBY MANOR AARON KATE	1042
28	1008	CAN 9886531	BROADVIEW YUKON GOLD	23-Aug-09	23	428	32	14	0.16	-0.01	2.85	7	4	9	3	8	8	USA 60470	SNIDERS OPTION ARRON-ET	1552	M	CAN 7924814	GUERNSEY VIEW MISSY'S ULTIMATE	1158
29	993	CAN 9598053	COMFORT FARMS HALEE	03-Oct-10	10	183	22	12	0.18	0.07	3.01	7	5	7	1	7	7	USA 60470	SNIDERS OPTION ARRON-ET	1552	M	CAN 7924766	GUERNSEY VIEW JAYDEN'S STAR	478
30	993	CAN 9598053	COMFORT FARMS HALEE	03-Oct-10	10	183	22	12	0.18	0.07	3.01	7	5	7	1	7	7	USA 60470	SNIDERS OPTION ARRON-ET	1552	M	CAN 7924766	GUERNSEY VIEW JAYDEN'S STAR	478
31	979	CAN 9598054	COMFORT FARMS PRESLEY	17-Jun-09	26	894	33	20	0.06	-0.04	2.96	3	4	1	-1	1	1	USA 60428	IDLE GOLD E CHALLENGE-ET	1106	M	CAN 7880072	BROADVIEW TULIP 2	957
32	973	CAN 9723849	LINDRIAN PAPER BEAR ET 200	14-Sep-09	23	438	32	14	0.17	-0.02	2.87	5	4	8	-1	-4	4	USA 60470	SNIDERS OPTION ARRON-ET	1552	M	CAN 8118358	COMFORT FARMS HILMA	880
33	973	CAN 9723849	LINDRIAN PAPER BEAR ET 200	14-Sep-09	23	438	32	14	0.17	-0.02	2.87	5	4	8	-1	-4	4	USA 60470	SNIDERS OPTION ARRON-ET	1552	M	CAN 8118358	COMFORT FARMS HILMA	880
34	969	CAN 8648370	BROADVIEW WHIMMY	15-Dec-08	19	86	24	8	0.30	0.07	2.83	9	9	6	3	2	2	USA 60470	SNIDERS OPTION ARRON-ET	1552	M	CAN 9589021	COMFORT FARMS FRALINE	1024
35	947	CAN 10658787	SEROL YOGIBEAR BESSICARI	22-Jun-08	26	585	33	16	0.11	-0.03	2.82	9	8	6	3	2	2	USA 60470	SNIDERS OPTION ARRON-ET	1552	M	CAN 8838476	LINDRIAN GARRETT PIPPI 465	466
36	947	CAN 10658787	SEROL YOGIBEAR BESSICARI	22-Jun-08	26	585	33	16	0.11	-0.03	2.82	9	8	6	3	2	2	USA 60470	SNIDERS OPTION ARRON-ET	1552	M	CAN 8838476	LINDRIAN GARRETT PIPPI 465	466
37	947	CAN 10658787	SEROL YOGIBEAR BESSICARI	22-Jun-08	26	585	33	16	0.11	-0.03	2.82	9	8	6	3	2	2	USA 60470	SNIDERS OPTION ARRON-ET	1552	M	CAN 8838476	LINDRIAN GARRETT PIPPI 465	466
38	933	CAN 8594225	MAPLEHURST AARON LUCY	12-Jun-11	7	414	24	13	0.09	-0.02	2.88	8	8	3	3	3	3	USA 60470	SNIDERS OPTION ARRON-ET	1552	M	CAN 7880073	BROADVIEW BANAH 2	387
39	929	CAN 11120488	EBY MANOR YOGI SEASON	25-Mar-11	4	810	33	23	-0.05	-0.08	2.83	4	5	6	-2	1	0	USA 60470	SNIDERS OPTION ARRON-ET	1552	M	CAN 7433740	MAPLEHURST BOLLER BESSIE	635
40	909	CAN 8852492	GUERNSEY VIEW TINA'S WINNIE	10-Oct-10	12	41	16	7	0.20	0.08	2.86	9	7	9	5	5	5	USA 60470	SNIDERS OPTION ARRON-ET	1552	M	CAN 8594151	MAPLEHURST BOLLER LAKISHA	341
41	909	CAN 8852492	GUERNSEY VIEW TINA'S WINNIE	10-Oct-10	12	41	16	7	0.20	0.08	2.86	9	7	9	5	5	5	USA 60470	SNIDERS OPTION ARRON-ET	1552	M	CAN 8594151	MAPLEHURST BOLLER LAKISHA	341
42	901	CAN 11259744	GUERNSEY VIEW TINA'S YANKEY	08-Apr-09	28	201	29	18	0.28	0.16	3.09	3	3	2	1	1	1	USA 60428	COLEE CREST LUXURY SPIDER-ET	1059	M	CAN 8665234	EBY MANOR WARDEN BELLESTE	798
43	886	CAN 10941346	MAPLEHURST NITRO KAROOM	12-Apr-11	4	203	17	9	0.12	0.03	2.87	7	4	1	-1	2	2	USA 60470	SNIDERS OPTION ARRON-ET	1552	M	CAN 7924802	GUERNSEY VIEW MADRES TINA	942
44	884	CAN 10941346	MAPLEHURST NITRO KAROOM	12-Apr-11	4	203	17	9	0.12	0.03	2.87	7	4	1	-1	2	2	USA 60470	SNIDERS OPTION ARRON-ET	1552	M	CAN 7924802	GUERNSEY VIEW MADRES TINA	942
45	884	CAN 10941346	MAPLEHURST NITRO KAROOM	12-Apr-11	4	203	17	9	0.12	0.03	2.87	7	4	1	-1	2	2	USA 60470	SNIDERS OPTION ARRON-ET	155				