

Canadian
Guernsey

Guernsey

NEWS

MAY 2025



Welcome
NEW MEMBERS

**SOLOMON
MATHESON**
Matheson
Kars, NB

Table
OF CONTENTS

03
Information Sheet

04
2025 AGM

05
President's Ramble
Registrar's Message

06
Field Representative Reflections

08
Lactanet: The New Lifetime Performance Index (LPI)

10
Supporting Youth: 4-H Applications & Education Scholarship

11
Save the Date: Guernsey Events 2025

12
Maplehurst Farm & London Dairy Farms

13
DairyTrace: A note from the DairyTrace Customer Services Team

14
Production Records

17
Classification Schedule & Breeds Classifications

18
NEW Guernsey Gear

19
Top Sires – Animals

20
Guernsey News 2025 Advertising Schedule

Information Sheet

20 Corporate Place, Box 610, Brantford, ON, N3T 5R4
Phone: 1-855-756-8300, Fax: 519-756-3502
Website: www.guernseycanada.ca

ADMINISTRATION:

Linda Markle, Administrative Coordinator:
Phone: 1-855-756-8300, ext. 272
Email: guernseyinfo@holstein.ca

FIELD REPRESENTATIVE:

Russell Gammon
Phone: 226-751-3618
Email: rggammon1@gmail.com

REGISTRAR & CONTACT FOR MEMBERSHIP, REGISTRATIONS AND TRANSFERS:

Isabelle Passaretti
Phone: 1-855-756-8300, ext. 223
Email: lpassaretti@holstein.ca

FIELD SERVICE BUSINESS PARTNERS:

NB, NS, PEI, NL
Claudia Perdomo
Email: cperdomo@holstein.ca

MB, SK, AB, BC
Toby Kleinsasser
Email: tkleinsasser@holstein.ca

VISIT THE CANADIAN GUERNSEY WEBSITE WWW.GUERNSEYCANADA.CA FOR:

- Current Director Listing
- Fee Schedule
- By-Laws
- Create a web account with our Registrar to proceed with online services, order DairyTrace tags, view herd management or classification reports
- Breed History
- Animal Inquiry
- Applications: Membership, Registrations and Transfers
- Newsletters, Updates, Journals, etc.

CONTACTS

American Guernsey Association: www.usguernsey.com
Milk Recording: Lactanet: www.lactanet.ca
Classification: Holstein Canada: www.holsteincanada.ca

AI UNIT WEBSITES

ABS Global: www.absglobal.com
Alta Genetics: www.canada.altagenetics.com
CIAQ: www.ciaq.com
Cogent Canada: www.cogentcanada.com
EastGen: www.eastgen.ca
Genex: www.genexcanada.ca
Select Sires: www.selectsiresgenerations.com
Semex: www.semex.ca
ST: www.stgen.ca
WestGen: www.westgen.com

BOARD OF DIRECTORS

President: Paul MacLeod

Vice President: Bruce Fuller

Board of Directors:

Christian Kaiser
Jim Eby
Brad Comfort
Colin Comfort
Scott Gordon
Liesl Thiessen
Morris Bartlett

GUERNSEY CATTLE BREEDERS ASSOCIATION OF ONTARIO

President: Morris Bartlett

Vice President: Marlin Martin

Board of Directors:

Ben Eby
Colin Comfort
Kyle Horst

BREED IMPROVEMENT COMMITTEE

Chair: Christian Kaiser

Committee Members:

Jim Eby
Scott Gordon
Eric Leach
Bruce Fuller
Russell Gammon
Paul MacLeod

FOLLOW US ON FACEBOOK

 Canadian Guernsey Association

2025 Annual General Meeting

The 120th Canadian Guernsey and 101th Guernsey Cattle Breeders of Ontario Association held their Annual General Meetings virtually and in person at Brantford Ontario on Friday March 21st.

The Annual Reports for both Associations are now available on our website at www.guernseycanada.ca. Following the meeting, the Board of Directors re-elected Paul MacLeod as President and Bruce Fuller as Vice President of the Canadian Guernsey Association. Additionally, the Guernsey Cattle Breeders of Ontario Association re elected Morris Bartlett as President and Marlin Martin as Vice President.

The full 2025 Board of Directors is listed on the next page. Annual Awards were presented to breeders for top animals in a variety of categories; all awards can be viewed in the Annual Report.

A special mention goes to Gold Star Breeder, Eby Manor Ltd. of Waterloo, ON. Congratulations on this well-deserved achievement!

Our guest speaker at this year's Annual Meeting was Senator Rob Black. His presentation on Agriculture in Canada was both insightful and thought-provoking, sparking some engaging conversations among attendees.

We had another successful and fun auction, featuring a wide variety of items and goodies generously donated by our members. A big thank you to everyone who contributed and to all the buyers for your support! We also introduced our new T-Shirts – **now available for purchase, see page 18.**



President's Ramble

Well as we all await some sunny warm weather things are springing forth at Guernsey Canada. We had a good Annual Meeting with Senator Rob Black speaking with information for all. It was an excellent year for Guernsey's with increases in both registrations and membership axnd I'm honoured to be your President once again.

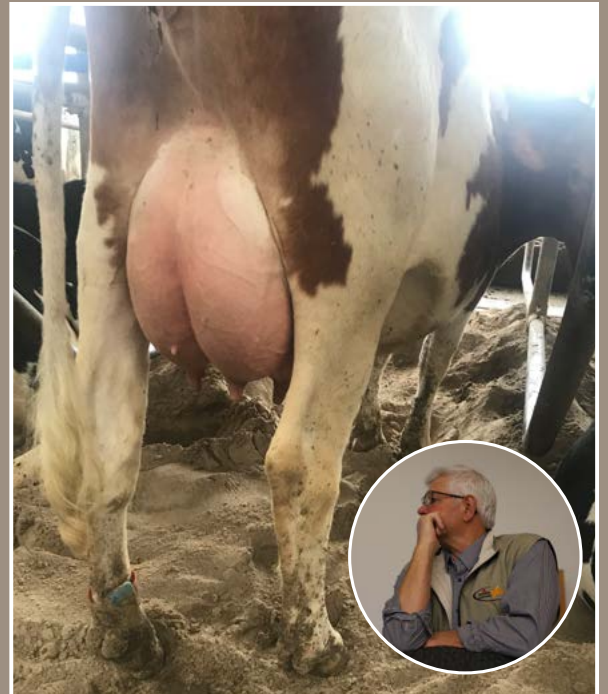
We welcome 2 new directors to the board Liesl Peters-Thiessen from Manitoba and Kyle Horst from Ontario. New people, new ideas! Thank you to the Forster's, Jocelyn and Rob, for the time and help with the Board. Looking forward to our picnic at new director Kyle's farm this Summer.

The Board has reviewed the one-time registration catch-up and is moving forward with this decision, more information to follow regarding qualifications.

Have a good safe Summer and if we can help with anything Guernsey, let us know!

- Paul MacLeod

National President



This picture is of Watson who calved at 2-00 and is currently filling 1 1/2 kilos per day!

Registrar Message

SPRING UPDATE FROM THE REGISTRAR'S OFFICE

I hope your year is off to a great start! With warmer days ahead and summer just around the corner, it's the perfect time for a quick update from the Registrar's Office.

Here's where things stand so far in 2025

(January 1 – March 31):

- 1 new member has joined the Association
- 54 registrations have been completed
- 46 classifications have been finalized

Falling behind on registrations?

No worries—we're here to help! Reach out to see if you qualify for our catch-up program.

Pending transfer?

Please send it directly to the Registrar by mail or email.

Make sure to include:

- A copy of the certificate of registration
- (An electronically submitted transfer application or written/electronic agreement is also acceptable)
- The date of transfer
- The seller's signature or written approval

If you have any questions or need assistance, don't hesitate to contact me by email at ipassaretti@holstein.ca or by phone at 1-855-756-8300, ext. 223.

Warm regards,

Isabelle Passaretti



Fieldman's Reflections

THE GUERNSEY TRAIN
IS GATHERING SPEED!



There can be no question that the Guernsey train was a prime example of "the train that could and kept chugging". The chugging has picked up momentum and now the train is flying along the track in a very positive direction!

High profile recognition of those working with Guernsey milk to make superior dairy products is appearing everywhere! The team at Promise Valley Farm in BC were highlighted in a new publication about sources of appealing food in the Vancouver Island region. Eby Manor Ltd and Upper Canada Cheese are expanding their reach and notoriety as sources of terrific cheeses and other products. The word Guernsey is on the lips of a growing number of consumers. This expands demand for Guernsey milk and thus, Guernsey cattle.

There are a number of herds updating registry work on cattle and this will expand our registration numbers beyond our twenty-one year high in 2024, hopefully. Should anyone require assistance with registry matters please contact this author or reach out to Isabelle in Brantford at ipassaretti@holstein.ca.

Every time Guernsey's are featured in auction sales, interest goes through the roof and wonderful prices are attained. Demand in the USA for top quality Guernsey's has been at historic levels. Guernsey's are the main attraction at sales! In May a few Guernsey's will be highlights of a multi-breed sale in Southern Ontario. We are scrambling to keep up with demand for small lots of Guernsey's.

As active as we have been on social media we have a massive amount of material still to share!

To date in 2025 we have made over 460 Facebook posts and in 2024 and the first third of 2025 we have made more than

1450 posts! Feel free to share posts on the Facebook page when you feel they would have value for your followers! The work of both the World Guernsey Cattle Federation and Global Guernsey Marketing have been terrific sources of material for our dissemination of Guernsey info! We are now over 6,300 followers on our page and will surely be over 6500 this year if not 7,000!! Telling the Guernsey story is our central goal!

19 seems to be an important number when it comes to Guernsey events later this year!

- **July 19:** The annual summer picnic will take place at the Horst families Hidden Lane Dairy near Elmira Ontario.
- **September 19:** The National Show will take place at Ancaster Fair in the early evening with Jeff Stephens serving as Judge.

Thank you for your efforts to breed productive Guernsey's with high solids, great health, vigour and conformation to sustain high yields over multiple lactations.

The main goal of the Association is embodied in the popular hashtag: #MakeMoreGuernseys!

There is more we could say but for now we'll give your eyes a rest!

Please keep in touch with your needs and also views on how we can keep the Guernsey train not only chugging but rolling. These are exciting revival times!

- RGG

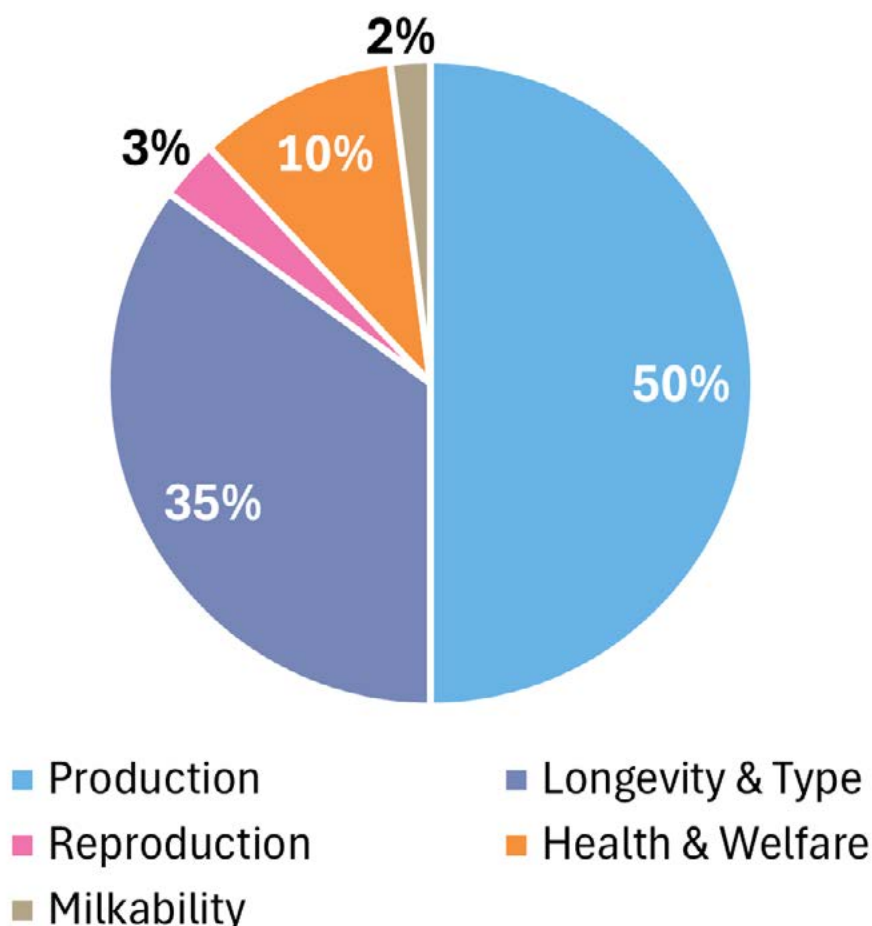
The New Lifetime Performance Index (LPI)

Since its introduction in 1991, the Lifetime Performance Index (LPI) has been a crucial tool for dairy farmers and breeders, guiding informed selection and mating decisions. Over the years, the LPI formula has evolved alongside industry breeding objectives with the inclusion of additional traits. The latest update, in April 2025, marked the launch of a modernized LPI for seven dairy breeds, including Guernsey. Let's delve into these recent changes so you can make the most of your breeding decisions.

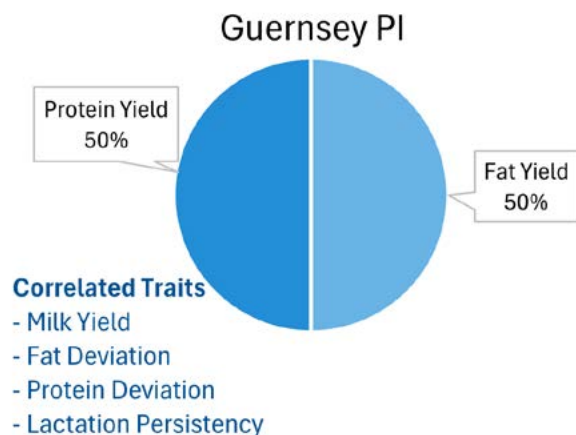
Five Subindexes for Balanced Breeding

The new formula includes five subindexes for the Guernsey breed, namely Production (PI), Longevity & Type (LTI), Health & Welfare (HWI), Reproduction (RI), and Milkability (MI). Each of these subindexes are published on their own and combined into LPI while maintaining the previous LPI scale, providing several options when making selection and mating decisions. Figure 1 shows the relative weights of each subindex in the LPI formula for the Guernsey breed. The subindexes were developed in consultation with the breed associations, industry partners, and breeders by identifying the traits to be directly included as well as traits that are favorably correlated with the subindex, even if not directly included. Each subindex is defined in more detail below along with the traits included for the Guernsey breed.

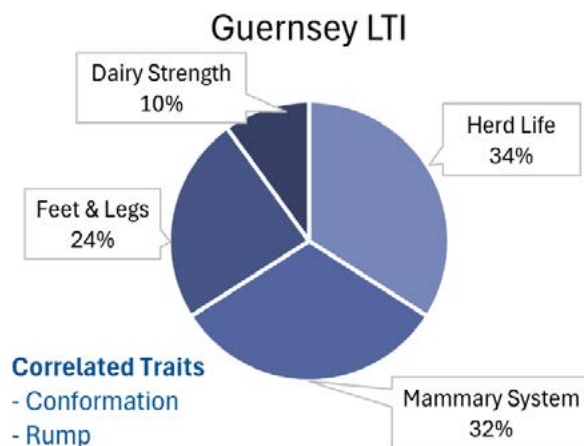
Figure 1. Relative Weights of Subindexes in the Guernsey Modernized Lifetime Performance Index



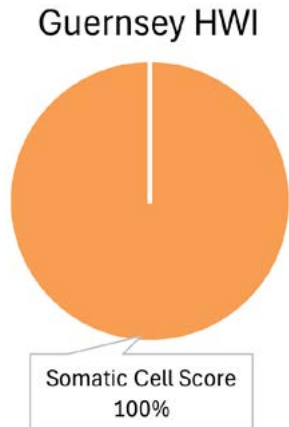
The **Production Index (PI)** is similar to the previous Production component of the LPI with the aim of maximizing fat and protein yields thereby increasing profitability. This subindex is also positively correlated with Milk Yield, Fat Deviation, Protein Deviation and Lactation Persistency.



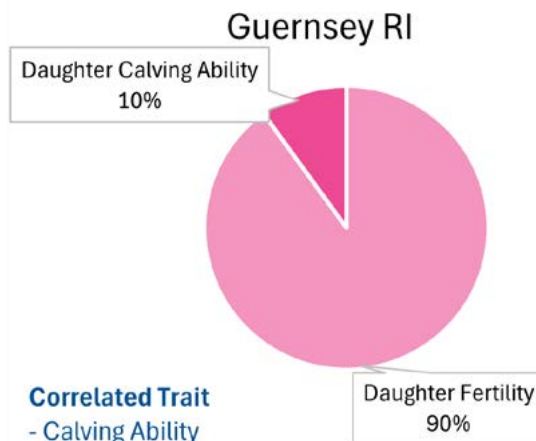
The **Longevity & Type Index (LTI)** aims to enhance herd longevity favouring functional conformation through selection for Herd Life, Mammary System, Feet & Legs and Dairy Strength.



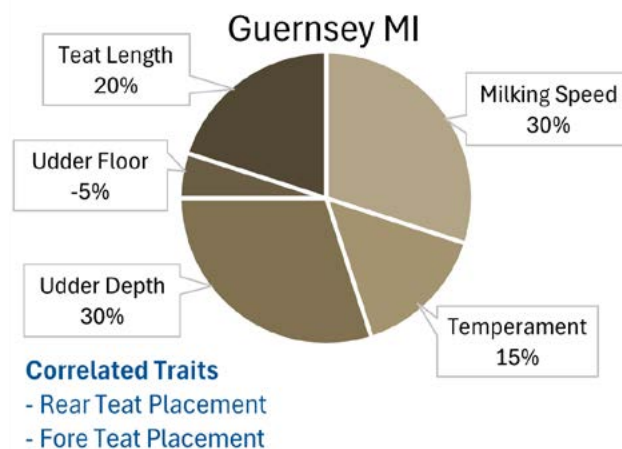
The **Health & Welfare Index (HWI)** improves disease resistance with selection for Somatic Cell Score. In combination with superior management, the HWI will lead to healthier, more disease resistant cows thereby decreasing expenses.



The goal of the **Reproduction Index (RI)** is to achieve genetic gain for female fertility and calving performance, which is represented by Daughter Calving Ability. Selection for this subindex also yields progress for Calving Ability.

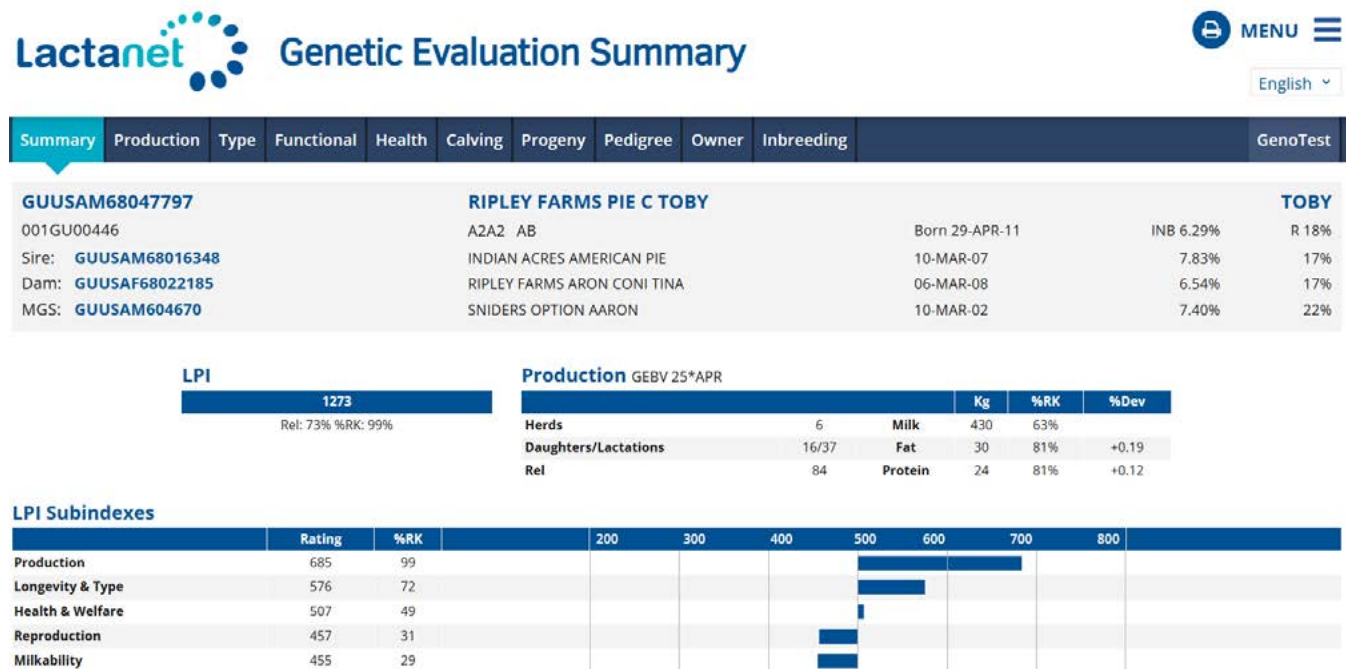


The **Milkability Index (MI)** is a new component of LPI with an aim to optimize milking efficiency designed to help all dairy farmers regardless of their production system. In addition to moderate weights on Milking Speed and Temperament, this subindex includes mammary traits related to desired udder and teat attributes.



Quickly Identify Animals that Standout for each Subindex

To help you compare subindex values and identify elite sires, each subindex is expressed on a standardized scale. The average proven sire is set to 500 with a standard deviation of 100, which means that two-thirds of proven sires will fall between 400 and 600. Favourable values will reach 700 or more. For each animal, the subindex values are published on the LactanetGen.ca website on their Genetic Evaluation Summary page along with the combined LPI value. This page includes histograms for each subindex that provide a quick reference to see the strengths and weaknesses for an animal.



Personalizing Your LPI

If you are looking for a more tailored approach geared toward your individual herd goals, you have the option to create your own personalized LPI (pLPI) by customizing the percentage relative emphasis on each subindex. In just three easy steps you can view your pLPI alongside the official LPI for each animal:

1. Create an account on LactanetGen.ca
2. In your "Preferences" page, select Guernsey as your preferred breed and then modify the subindex weights to create your pLPI.
3. View your pLPI via either the Animal Query or Group Query results.

Summary

The LPI has been updated to reflect a more modern approach to balanced breeding, combining important traits into five subindexes for the Guernsey breed. You may wish to make selection decisions based on this official LPI, individual subindexes values and the histograms, or create a pLPI to prioritize subindexes that are most important to you. With LPI, you can boost genetic progress and select for a herd that is high performing, efficient, and long lasting!

Authors

Hannah Sweett, Knowledge Transfer Specialist – Genetics Portfolio

Brian Van Doormaal, Chief Services Officer

Supporting Youth

4-H APPLICATIONS

If you or a youth you know is participating in 4-H with Guernsey calves, please let us know.
The form is available on the website <http://www.guernseycanada.ca/>



4-H Awards



The Canadian Guernsey Association is pleased to support the 4-H program by presenting a special award to 4-H members who complete their project using a registered Guernsey calf. Applications are received throughout the year and close as of November 30th of the current year.

Name: _____ Age: _____

Address: _____

Postal Code: _____ Phone: _____

Number of years using a registered Guernsey calf: _____

Name of Calf: _____ Reg #: _____

Owner of Calf: _____

Name of 4-H Club: _____

Name & Address of Club Leader: _____

I certify that the above member has completed their 4-H calf club project with a registered Guernsey calf.

Signature of Leader _____ Date _____

This form is to be returned upon completion of project to:

Canadian Guernsey Association
Box 610 (b/c: 20 Corporate Place)
Brantford ON Canada N3T 5M4

Fax: 519-756-3502

Phone: 1-855-756-8300

Email: Guernseyinfo@holstein.ca

EDUCATION SCHOLARSHIP

Attention: Reminder for students: Application for the scholarship are due on **August 1**.
Please email Guernseyinfo@holstein.ca for an application or any questions.

 **CANADIAN GUERNSEY ASSOCIATION SCHOLARSHIP**

In memory of Lillian Beckett & John Y McNabb

Name: _____

Address: _____

Telephone No: _____

Age: _____

University or College: _____

Program: _____

Eligibility:

1. Must be active or have been active in the promotion of the Guernsey Breed.
2. Must be enrolled in a post-secondary university or college.
3. No individual is eligible for a second award, but unsuccessful applicants may re-apply, if eligible.
4. Return the application no later than August 1st.

Canadian Guernsey Association
Box 610 (b/c: 20 Corporate Place)
Brantford ON Canada N3T 5M4
Fax: 519-756-3502
Phone: 1-855-756-8300
Email: Guernseyinfo@holstein.ca

AWARD

One scholarship of \$500.00 will be awarded to a student enrolled in a college diploma or university degree program. Proof of enrollment must be included with the application. The award could be presented at the National Guernsey Show in September.

As part of your application, please answer the following questions.

Scholarship Questionnaire:

1. Education: Describe the main emphasis of your course of study and your reasons for your involvement in the program.
2. Farm Experience: Provide a detailed explanation of all duties and responsibilities you assume on your home farm and other farms.
3. 4-H and/or Junior Farmers: Note years of involvement and achievement awards. List total number of 4-H clubs completed and executive positions held. List all offices held and activities you were part of when in Junior Farmers.
4. Explain what 4-H and/or Junior Farmers have done for you in terms of personal growth, attitude, etc.
5. Goals: Provide a short essay on your career goals (need not be agriculture related).

Fax: 519-756-3502 Phone: 1-855-756-8300 Email: Guernseyinfo@holstein.ca





SAVE the DATES

GUERNSEY SUMMER PICNIC

The Canadian Guernsey Association Summer Picnic

MARK YOUR CALENDARS!

This year's Summer Picnic will be held on Saturday, July 19th.

We're excited to announce that our hosts will be the Horst family at:

HIDDEN LANE DAIRY,

located at 7144 Line 86, Elmira, ON.

ANCASTER GUERNSEY SHOW

Thursday September 19, 2025 | 4:30 p.m. | Ancaster Fair Grounds

Judge: Jeff Stephens

Looking forward to seeing you there at the show or in the stands!



MAPLEHURST FARM & LONDON DAIRY FARMS



MAPLEHURST Pilot Treat EX95

- 3x Grand Champion Canadian National Show.
- HM All-American 2022 & 2023.
- 2nd Lifetime Production Cow WDE 2024.
- Calves by McDreamy
- Owned with Austin and Meghan Landkammer

EMBRYOS AVAILABLE

For more information, please contact
Eric Salonen at 519-803-3722



A note from the DairyTrace Customer Services Team:



After more than four years of traceability data collection, DairyTrace has matured to focus on data completeness and integrity as well as value added benefits. DairyTrace has started building on the current infrastructure of its traceability database to provide metrics, ensure data integrity and accuracy as well as incorporate tools that will help connect the industry and provide benefits across the dairy value chain.

This new focus relies on many different team members, including the Customer Services team! In addition to assisting producers through calls and emails for reporting events, recent Customer Services initiatives include identifying data inconsistencies and data improvement projects, such as:

- Animal inventory clean-up projects
- Premises information verification
- Account updates and inactive account validation
- Looking into contradictions in timing of events reported (e.g. a move-in reported for an animal after the date of tag retirement) *...and more*



Three Pillars of Traceability



Premises Identification



Animal Identification



Animal Movement

All traceability events such as tagging, movement and end of life, are integral in following the life of an animal from its dairy farm of origin to end of life and identifying all other animals it may have been in contact with.



Customer Service Tips

In addition to reporting traceability events, did you know that the DairyTrace Portal offers these additional tools and functions? **Log in and explore!**

1 Order New & Reissue/Replacement Dairy Tags

2 Generate a Birthdate Certificate

3 Age Verification Animal Search

4 View & Edit Events Reported

5 Download the DairyTrace proAction® Report

6 DairyTrace Premises ID Search

In Québec? *All tag ordering and traceability reporting for dairy farmers in Québec continues to be offered through Attestra and the SimpliTRACE database.

DairyTrace.ca

Support for provinces outside of Québec:

Phone: 1-866-558-7223

Ordering Tags: tags@dairytrace.ca

Traceability: info@dairytrace.ca

Support for Québec:

Phone: 1-866- 270-4319

Email: sac@attestra.com

Production Records

LACTATION RECORDS COMPLETED BETWEEN NOVEMBER 2024 TO MARCH 2025 ABOVE THE NATIONAL BCA COMPOSITE

Yearlings		Class	Yr	Mth	M	F	%F	P	%P	M	F	P	Comp BCA	Owner	
GUCANF14028742	EBY MANOR JC PENNEY LAINEY	G	75	1	10	8335	374	4.5	267	3.2	291	263	262	816	EBY MANOR LTD, ON
GUCANF14028747	EBY MANOR JC PENNEY WONDER	GP	81	1	11	8603	339	3.9	269	3.1	303	239	266	808	EBY MANOR LTD, ON
GUCANF120840642	CRÉMEDOR CHECKMATE 40642	GP	83	1	11	7295	327	4.5	244	3.3	274	246	259	779	ENTREPRISE FAMILIALE KAISER INC, QC
GUCANF14028749	EBY MANOR THEO ICING	GP	83	1	9	6991	354	5.1	227	3.2	253	258	232	743	EBY MANOR LTD, ON
GUCANF14300474	SHOWCASE DOUBLE DAWSON ZORA	G	78	1	10	6966	311	4.5	230	3.3	246	222	228	696	NATIONAL MUSEUM OF SCIENCE & TECHNOLOGY CORP., ON
GUCANF14291746	COULEE CREST PHARMER BRO	GP	82	1	10	7020	296	4.2	221	3.1	253	217	225	695	MARLEY FARMS INC, ON
GUCANF14291747	MAPLEHURST JAGUAR SATURN	GP	83	1	11	6499	319	4.9	241	3.7	226	225	236	687	MARLEY FARMS INC, ON
GUCANF120807692	CRÉMEDOR THEO 7692 JAIME	G	78	1	9	6037	318	5.3	219	3.6	224	234	228	686	ENTREPRISE FAMILIALE KAISER INC, QC
GUCANF120840646	CRÉMEDOR KANDYMAN SKITTLES ET	GP	80	1	10	5892	322	5.5	226	3.8	208	230	224	662	ENTREPRISE FAMILIALE KAISER INC, QC
GUCANF14028735	EBY MANOR IMMACULATE FANCY			1	11	6436	322	5	230	3.6	218	219	219	656	EBY MANOR LTD, ON
GUCANF14028736	EBY MANOR THEO LAUREL	G	76	1	11	7104	296	4.2	221	3.1	241	203	210	654	EBY MANOR LTD, ON
GUCANF14291749	PRAIRIE MOON WADE DESTIN	GP	81	1	10	6847	261	3.8	222	3.2	241	186	220	647	MARLEY FARMS INC, ON
GUCANF14028750	EBY MANOR DRONE TABITHA	G	76	1	10	5818	258	4.4	198	3.4	221	196	211	628	EBY MANOR LTD, ON
GUCANF14255400	HIDDEN LANE LORI	GP	83	1	11	5382	260	4.8	197	3.7	182	178	188	548	HIDDEN LANE DAIRY INC., ON
Jr. 2 Yr Old		Class	Yr	Mth	M	F	%F	P	%P	M	F	P	Comp BCA	Owner	
GUCANF120840545	CRÉMEDOR JAVA 40545-P	G	71	2	3	7801	359	4.6	277	3.5	257	238	256	751	MARLEY FARMS INC, ON
GUCANF13897149	BEAVERWOOD MACE JACQUELINE			2	5	8678	353	4.1	283	3.3	274	222	250	746	BEAVERWOOD FARMS INC., NB
GUCANF13882586	BEAVERWOOD ROYALS JENNA			2	4	7384	332	4.5	261	3.5	257	229	256	742	BEAVERWOOD FARMS INC., NB
GUCANF120840605	COULEE CREST JDN 40605 SHANON ET	GP	81	2	0	7158	332	4.6	259	3.6	251	233	254	738	ENTREPRISE FAMILIALE KAISER INC, QC
GUCANF13897167	BEAVERWOOD MACE KOREY			2	1	7767	324	4.2	262	3.4	266	220	252	738	BEAVERWOOD FARMS INC., NB
GUCANF13897165	BEAVERWOOD JAVA JALEPEN0			2	0	7216	335	4.6	249	3.5	245	229	237	711	BEAVERWOOD FARMS INC., NB
GUCANF14211822	COMFORT FARMS NOVAK LUCINE	G	72	2	3	8010	310	3.9	245	3.1	262	204	225	691	COMFORT FARMS LTD, ON
GUCANF14089185	AUCHINLECK KEREN PILOT	GP	80	2	2	8075	295	3.6	250	3.1	264	194	229	687	AUCHINLECK FARMS LTD, PE
GUCANF14255407	HIDDEN LANE REPUTATION LILAC	GP	81	2	1	7047	287	4.1	239	3.4	241	195	230	666	HIDDEN LANE DAIRY INC., ON
GUCANF120840560	CRÉMEDOR PHARMER 40560 ET	VG	85	2	3	6577	321	4.9	237	3.6	217	213	219	649	MARLEY FARMS INC, ON
GUCANF14291734	DUSTYLAND TOBYKEITH LUCKY	G	78	2	2	6489	328	5	234	3.6	215	217	217	649	MARLEY FARMS INC, ON
GUCANF14211827	COMFORT FARMS JAVA ADELE	GP	81	2	0	6487	273	4.2	220	3.4	222	188	212	622	COMFORT FARMS LTD, ON
GUCANF14211825	COMFORT FARMS EXCALIBURE ESTER	G	73	2	1	6873	281	4.1	207	3	230	190	195	615	COMFORT FARMS LTD, ON
GUCANF13780679	LINDRIAN PENNY PENNY	G	78	2	2	5878	290	4.9	242	4.1	195	192	224	611	EAGLE ACRES DAIRY, BC
GUCANF13897153	BEAVERWOOD MACE JILLIAN			2	3	6201	298	4.8	214	3.5	203	195	196	594	BEAVERWOOD FARMS INC., NB
GUCANF12936180	COMFORT FARMS DL GINGER	G	78	2	3	6217	288	4.6	211	3.4	204	188	194	586	COMFORT FARMS LTD, ON
GUCANF120840561	CRÉMEDOR CRAIG 40561	GP	83	2	2	5820	277	4.8	215	3.7	194	186	201	581	MARLEY FARMS INC, ON
GUCANF14211823	COMFORT FARMS LOGO LEIA	G	79	2	2	6334	277	4.4	199	3.1	210	183	184	577	COMFORT FARMS LTD, ON
GUCANF120840633	CRÉMEDOR SPITFIRE 40633	G	78	2	0	5544	262	4.7	192	3.5	197	184	192	573	ENTREPRISE FAMILIALE KAISER INC, QC
GUCANF120807691	CRÉMEDOR KANDYMAN 7691 STJEANE			2	0	4535	211	4.7	152	3.4	166	154	157	477	ENTREPRISE FAMILIALE KAISER INC, QC
Sr. 2 Yr Old		Class	Yr	Mth	M	F	%F	P	%P	M	F	P	Comp BCA	Owner	
GUUSAF97011494	HI GUERN VIEW DRONE AUGUSTA	GP	82	2	8	7421	382	5.2	251	3.4	227	233	216	676	HIDDEN LANE DAIRY INC., ON
GUCANF13520674	EBY MANOR LEGEND WINNY	VG	85	2	10	7863	336	4.3	266	3.4	237	202	225	664	EBY MANOR LTD, ON
GUCANF13882580	BEAVERWOOD BUILTS HAVANESE			2	11	7667	305	4	286	3.7	229	183	240	652	BEAVERWOOD FARMS INC., NB
GUCANF120562571	CRÉMEDOR THEO 2571			2	11	6809	353	5.2	264	3.9	206	213	224	643	MARLEY FARMS INC, ON
GUCANF12936177	COMFORT FARMS LOGO JASPER	GP	80	2	11	5784	242	4.2	192	3.3	195	163	184	542	COMFORT FARMS LTD, ON
GUCANF13640225	TWISTED CREEK INDIGO TARTAN	VG	85	2	10	8559	435	5.1	289	3.4	266	269	251	786	DARCROFT FARMS LTD., ON
GUUSAF97009864	BALSAM GROVE LOGOS IRUS V			2	11	9041	321	3.5	294	3.2	279	197	253	729	HIDDEN LANE DAIRY INC., ON
GU840F3142484711	SNIDERS HP GG ARABIA-ETV	GP	84	2	9	7402	353	4.8	253	3.4	249	234	239	722	HIDDEN LANE DAIRY INC., ON

Jr. 3 Yr Old		Class	Yr	Mth	M	F	%F	P	%P	M	F	P	Comp BCA	Owner	
GUCANF13520650	EBY MANOR LIGHTNING RUBY	GP	81	3	1	10933	508	4.7	365	3.3	355	324	332	1011	EBY MANOR LTD, ON
GUCANF13520646	EBY MANOR LEGEND WHISPER	VG	86	3	4	10885	456	4.2	366	3.4	333	273	313	919	EBY MANOR LTD, ON
GUCANF13780647	LINDRIAN PETRA COIN	G	78	3	1	9764	477	4.9	308	3.1	290	282	257	829	RICHARD & ASHLEY VANDER KOOI, BC
GUCANF120562538	GOLD TOP BEAVER 2538	GP	83	3	1	9255	404	4.4	313	3.4	275	239	261	775	MARLEY FARMS INC, ON
GUUSAF97009407	COULEE CREST LADYSMAN MARIAH	GP	81	3	3	9253	385	4.2	281	3	288	236	246	770	MARLEY FARMS INC, ON
GUCANF13408854	FULLER VIEW INDIGO JINX	VG	86	3	2	6784	416	6.1	263	3.9	227	278	251	756	FULLER VIEW FARM, MUSQIE VALLEY FARMS, J. FUL, NS
GU840F3143480297	HAVEN-RIDGE BRISTOL	GP	82	3	5	8984	419	4.7	320	3.6	257	239	258	754	HIDDEN LANE DAIRY INC., ON
GUUSAF97009590	COULEE CREST TK LONNIE	GP	82	3	1	7149	363	5.1	260	3.6	226	227	230	683	MARLEY FARMS INC, ON
GU840F3209615588	JENS GOLD POPEYE KHAOS-TW	GP	80	3	2	6776	352	5.2	256	3.8	220	226	233	679	HIDDEN LANE DAIRY INC., ON
GUCANF13882568	BEAVERWOOD BEAVERS HALLE			3	1	7451	365	4.9	268	3.6	224	216	225	665	BEAVERWOOD FARMS INC., NB
GUCANF120187907	COULEE CREST DRONE 7907	VG	86	3	4	7787	369	4.7	277	3.6	225	212	225	662	MARLEY FARMS INC, ON
GUCANF13882570	BEAVERWOOD INDIGOS HALO			3	3	7095	382	5.4	260	3.7	209	225	215	649	BEAVERWOOD FARMS INC., NB
GUCANF13882577	BEAVERWOOD BUILTS HOPE 3			3	1	6743	353	5.2	257	3.8	200	209	214	623	BEAVERWOOD FARMS INC., NB
GUCANF13520664	EBY MANOR COIN TIRZAH	GP	81	3	4	7040	296	4.2	231	3.3	209	174	193	576	EBY MANOR LTD, ON
GUCANF13882587	BEAVERWOOD ROYALS JESSICA			3	1	5563	273	4.9	198	3.6	173	167	173	513	BEAVERWOOD FARMS INC., NB
GUCANF13882581	BEAVERWOOD BEAUS HANNA 4			3	0	5030	267	5.3	206	4.1	151	160	173	484	BEAVERWOOD FARMS INC., NB
GUCANF12936174	COMFORT FARMS ERNIE GLORIA	G	79	3	2	5159	208	4	172	3.3	169	137	159	465	COMFORT FARMS LTD, ON
GUCANF12936173	COMFORT FARMS LOGO LORNA	GP	83	3	0	5629	224	4	173	3.1	172	136	148	456	COMFORT FARMS LTD, ON
Sr. 3 Yr Old		Class	Yr	Mth	M	F	%F	P	%P	M	F	P	Comp BCA	Owner	
GUCANF9594238	SANDMOOR EVA'S HONEY 1H	GP	83	3	7	9752	473	4.8	330	3.4	276	266	262	804	MICHAEL B SANDESON, NS
GUCANF12962134	RANDALE 374	GP	80	3	6	8113	395	4.9	281	3.5	244	235	238	717	RANDY GUERNSEY, ON
GUCANF13408845	FULLER VIEW BEAU HARRIET	VG	85	3	7	7448	363	4.9	282	3.8	233	223	247	703	PETER DENUKE, NS
GUUSAF97009864	BALSAM GROVE LOGOS IRUS V	EX	90	3	11	8978	316	3.5	288	3.2	256	180	230	666	HIDDEN LANE DAIRY INC., ON
GU840F3218064708	SPRINGHILL JAZZYS JOHNNY-ETV ET	VG	88	3	7	6793	384	5.7	208	3.1	211	236	181	628	MT. ELGIN DAIRY FARMS, ON
GUCANF13882567	BEAVERWOOD DAWSON HAN-NALEE			3	6	6967	344	4.9	260	3.7	204	200	213	617	BEAVERWOOD FARMS INC., NB
GUCANF13253921	BEAVERWOOD DAWSONS HALEY			3	7	6786	364	5.4	248	3.6	195	208	200	603	BEAVERWOOD FARMS INC., NB
GUCANF13253918	BEAVERWOOD BEAUS HELIUM			3	7	6778	363	5.4	250	3.7	193	206	200	599	BEAVERWOOD FARMS INC., NB
GUCANF13520658	EBY MANOR JAGUAR WISTERIA	GP	83	3	6	6899	341	4.9	210	3	202	198	172	572	EBY MANOR LTD, ON
GUCANF13262819	RUNNING SPRING BEAU TULA	VG	85	3	10	6763	300	4.4	222	3.3	189	168	175	532	MORRIS & PENNY BARTLETT, ON
GUCANF13253889	BEAVERWOOD DAWSONS GERALDINE			3	8	5984	291	4.9	221	3.7	171	165	177	513	BEAVERWOOD FARMS INC., NB
GUCANF13640213	TWISTED CREEK PILOT TANGERINE	GP	80	3	11	6035	266	4.4	203	3.4	169	149	160	478	HIDDEN LANE DAIRY INC., ON
4 Yr Old		Class	Yr	Mth	M	F	%F	P	%P	M	F	P	Comp BCA	Owner	
GUUSAF97011661	IDLE GOLD BROGDON CHAR-DONNAY	GP	80	4	3	10717	488	4.5	370	3.5	324	289	314	927	HIDDEN LANE DAIRY INC., ON
GU840F3240477098	PRAIRIE MOON RUBEE GIN	GP	83	4	2	10747	438	4.1	366	3.4	295	241	282	818	MARLEY FARMS INC, ON
GUCANF13262818	MAPLEHURST LEGEND RASP-BERRY	VG	85	4	0	10233	456	4.5	328	3.2	286	255	256	797	HIDDEN LANE DAIRY INC., ON
GUUSAF97009362	SUNNY MEAD NOVAK GOLDIE	VG	87	4	2	8549	475	5.6	315	3.7	234	260	242	736	EBY MANOR LTD, ON
GUCANF13262800	MAPLEHURST LADYSMAN SEASON	GP	83	4	6	9942	384	3.9	328	3.3	268	206	248	722	MARLEY FARMS INC, ON
GUCANF13253899	BEAVERWOOD BEAUS GOGO			4	6	6663	393	5.9	267	4	191	225	216	632	BEAVERWOOD FARMS INC., NB
GUCANF13253896	BEAVERWOOD LAKODA GOAL			4	6	7759	389	5	252	3.2	214	215	195	624	BEAVERWOOD FARMS INC., NB
GUCANF13517920	AUCHINLECK KEZIAH LAKODA	VG	87	4	8	7706	305	4	264	3.4	212	168	203	583	AUCHINLECK FARMS LTD, PE
GUCANF13253879	BEAVERWOOD CASPIANS STAR			4	10	6620	296	4.5	229	3.5	176	157	171	504	BEAVERWOOD FARMS INC., NB
GUCANF13253893	BEAVERWOOD DAWSONS GOLD			4	6	5855	308	5.3	216	3.7	159	167	165	491	BEAVERWOOD FARMS INC., NB

5 Yr Old		Class	Yr	Mth	M	F	%F	P	%P	M	F	P	Comp BCA	Owner	
GU840F3146265375	RIVERWOOD RANDALL NATASHA	GP	81	5	7	12931	482	3.7	397	3.1	338	254	292	884	HIDDEN LANE DAIRY INC., ON
GUCANF12650331	SPRING ROSE LADYSMAN BARBIE	GP	80	5	1	10645	482	4.5	359	3.4	281	256	266	803	AARON HENHOEFFER, ON
GUUSAF97008299	GR-GAJOLY BOMAN CALLIE	GP	81	5	9	9114	462	5.1	322	3.5	250	254	248	752	MARLEY FARMS INC, ON
GUUSAF97010335	GT-IDLE GOLD COPPER SHELBY	VG	88	5	8	9997	383	3.8	328	3.3	260	202	239	701	MARLEY FARMS INC, ON
GUUSAF97006831	COULEE CREST LOGAN DEVON			5	5	9998	358	3.6	320	3.2	262	188	235	685	MARLEY FARMS INC, ON
GU840F3146905273	UP THE CREEK PC NUGGET	VG	85	5	9	8647	368	4.3	297	3.4	228	196	220	644	HIDDEN LANE DAIRY INC., ON
GUCANF12936115	COMFORT FARMS ELLYANNE	GP	82	5	5	6915	309	4.5	222	3.2	191	171	172	534	COMFORT FARMS LTD, ON
Mature Cow		Class	Yr	Mth	M	F	%F	P	%P	M	F	P	Comp BCA	Owner	
GUCANF12062980	EBY MANOR LOGO SYLVIA	GP	82	7	4	11613	517	4.5	369	3.2	335	301	300	936	EBY MANOR LTD, ON
GUCANF12292488	LINDRIAN LEVI PEPPY ET	EX	92	6	2	9977	466	4.7	373	3.7	259	244	272	775	MARLEY FARMS INC, ON
GUUSAF78005651	COULEE CREST PATRIOT KENDRA	VG	85	8	2	8719	424	4.9	316	3.6	253	249	257	759	MARLEY FARMS INC, ON
GUCANF12292432	MAPLEHURST GEO LADDIE	EX	92	8	1	8571	411	4.8	301	3.5	249	242	245	736	MARLEY FARMS INC, ON
GUCANF12792981	BEAVERWOOD LEVI'S ELISE			6	5	8450	401	4.8	317	3.8	219	210	231	660	BEAVERWOOD FARMS INC., NB
GUCANF11902347	COMFORT FARMS DYNA	VG	86	6	9	7931	443	5.6	272	3.4	204	232	197	633	COMFORT FARMS LTD, ON
GUCANF12792984	BEAVERWOOD PRADA'S ELSA			6	4	7653	378	4.9	282	3.7	203	200	210	613	BEAVERWOOD FARMS INC., NB
GUCANF12292466	MAPLEHURST LEOPOLD LILA	VG	85	7	8	6731	391	5.8	277	4.1	183	217	211	611	MARLEY FARMS INC, ON
GUCANF12062983	EBY MANOR LEO WILLOW	VG	88	8	2	7743	380	4.9	261	3.4	206	205	195	606	EBY MANOR LTD, ON
GUUSAF97000577	GR-RIVERWOOD ASSAULT JADE	G	79	8	8	8253	324	3.9	262	3.2	214	175	191	580	HIDDEN LANE DAIRY INC., ON
GUCANF12251472	BEAVERWOOD PILOT'S DESIREE			7	10	6664	350	5.2	248	3.7	171	186	180	537	BEAVERWOOD FARMS INC., NB
GUCANF12251492	BEAVERWOOD CORDELL'S DENNA			7	2	6054	366	6	244	4	155	193	176	524	BEAVERWOOD FARMS INC., NB
Aged Cow		Class	Yr	Mth	M	F	%F	P	%P	M	F	P	Comp BCA	Owner	
GUCANF9989567	BROADVIEW ARLIE	VG	85	10	9	12157	537	4.4	381	3.1	352	327	310	989	HIDDEN LANE DAIRY INC., ON
GUCANF11255627	BEAVERWOOD PRADA'S DOMINIQUE			10	4	7588	399	5.3	269	3.5	201	224	199	624	BEAVERWOOD FARMS INC., NB



Classification Schedule

MAY

EARLY

ON – Peel, Halton, York, Dufferin, Simcoe, Ontario, Peterborough, Victoria, Durham

QC – Yamaska, Drummond, Bagot, St-Hyacinthe, Vercheres

SK – [MR]

MID

ON – [MR]: Middlesex, Elgin, Lambton

ON – Northumberland, Hastings, Prince Edward

QC – [MR]: Frontenac, Beauce

QC – Richelieu, Rouville

AB – [MR]

LATE

ON – Lennox & Addington, Frontenac

JUNE

EARLY

ON – [MR]: Oxford

ON – Waterloo, Timiskaming, Cochrane, Nipissing, Algoma

QC – [MR]: Levis, Dorchester, Bellechasse

QC – Abitibi, Temiscamingue, Labelle, Argenteuil, Papineau, Gatineau, Terrebonne, Deux-Montagnes

MID

ON – Wellington, Dundas

QC – L'Assomption, Montcalm, Joliette, Berthier, Maskinonge, St-Maurice, Champlain

LATE

ON – Stormont

QC – [MR]: Montmagny, L'Islet, Kamouraska

QC – Laviolette, Portneuf

Classifier conference from May 26-30

This schedule is subject to change within a 1-2 week period

Guernsey Breed Classifications

DECEMBER 2024 - MARCH 2025 - 80+

Registration Number	Name	Final Class	Final Score	ME	Owner
GUCANF13408846	FULLER VIEW LADY'S MAN HARPER	EX	90	0	THE FULLER VIEW FARM
GUCANF13408848	VALLEY VIEW BEAU ADELIA	EX	90	0	THE FULLER VIEW FARM
GUCANF14173434	DON HAVEN TSUNAMI VINDALOO	VG2	86	0	SCOTT A. GORDON

GUERNSEY GEAR

Available for purchase



HAT A:

AJM 6 PANEL ENZYME WASHED

Super soft 6 Panel Constructed Full-Fit (Mesh Back) Enzyme Washed Deluxe Chino Twill/Soft Nylon Mesh cap.



HAT B:

AJM FIVE PANEL BASEBALL CAP

- 5 Panel Constructed
- Pro-Round-Five (Mesh Back) baseball cap made from Deluxe Chino Twill / Nylon Mesh. Has Pro-Stitch & a Pre-curved peak.



SHIRT A:

SAND-COLORED UNISEX COTTON T-SHIRT

- Features the classic Guernsey logo on the front chest and the Golden Guernsey logo on the back.
- Sizes range from M- 2XL
- \$25 + tax & shipping

SHIRT B:

GREEN POLY POLO SHIRT

- Made from breathable poly fabric, with the Guernsey logo on the front chest.
- Men's sizes range from M- 3XL / Woman's sizes range from M-XL
- \$30 + tax & shipping

NEW: Guernsey 4H Polo Shirts Available!

In need of a new shirt for show season? We've got you covered!

SHIRT C:

WHITE SOFT TOUCH POLO

- Features the classic Guernsey logo on the front chest
- \$30 + tax & shipping

To purchase, email at guernseyinfo@holstein.ca. We can bill directly to your Holstein Canada Account if desired, please provide address upon request for estimated shipping quote.

Top Sires - Animals

TOP SIRES USED FOR REGISTRATIONS IN 2024 AND 2025 AS OF APRIL 2025

Sire	Count
COULEE CREST TSUNAMI-ETV	40
HI GUERN VIEW LEVI DRONE	33
CRÈMEDOR FLEURY	31
UP THE CREEK LONDON AUDREY	29
COULEE CREST CARVER	29
MEADOW GLOW L KANDYMAN	24
SPRINGHILL JAVA-ETV-P	23
SMITHFIELD CRAIG MAVERICK	17
LANG HAVEN LONDON TORPEDO	17
COULEE CREST COIN LANDON	16
EBY MANOR INDIGO	14
SPRINGHILL JC PENNEY	14
DAIRYMAN CRAIG JRUE	14
GLADHEART MICHELANGELO	12
COULEE CREST RICHARD CHECKMATE	11
COULEE CREST LAVAS HURRICANE-ETV	11
COULEE CREST TOBY KEITH	10
HI GUERN VIEW CC DENZEL-ETV	10
DAIRYMAN THEO PELOTON	10

Guernsey News

2025 SCHEDULE

May	Newsletter (submissions due by April 1)
August	Newsletter (submissions due by July 15)
December	Newsletter (submissions due by November 15)

We are always looking for advertisement submissions for our Guernsey News! **New discounted rates for advertisement frequency in multiple newsletters.**

If you could please provide any advertisements in the below format: Wording for art work specs i.e. design specs – CMYK at 300 ppi in PDF format. We encourage you to submit Camera ready / Completed ads to take advantage of an additional 25% discount.

If you need help putting an advertisement together kindly reach out to Emilie Wallace, and we can look into this on a case by case basis for costs to do ad layout.

SIZE	FREQUENCY 1 Member/Non-Member Rate	FREQUENCY 2 Member/Non-Member Rate (Discount of 15% for 2 ads)	FREQUENCY 3 Member/Non-Member Rate (Discount of 25% for 2 ads)
FULL PAGE 8.5" x 11" <i>with 0.25" bleed</i>	\$240.00 / \$420.00 PER ISSUE	\$200.00 / \$360.00 PER ISSUE	\$180.00 / \$315.00 PER ISSUE
1/2 PAGE 8.5" x 5.5" <i>with 0.25" bleed</i>	\$150.00 / \$240.00 PER ISSUE	\$130.00 / \$200.00 PER ISSUE	\$110.00 / \$180.00 PER ISSUE
1/3 PAGE 8.5" x 3.67" <i>with 0.25" bleed</i>	\$120.00 / \$180.00 PER ISSUE	\$105.00 / \$150.00 PER ISSUE	\$90.00 / \$135.00 PER ISSUE
1/4 PAGE 5.5" x 4.25" <i>with 0.25" bleed</i>	\$100.00 / \$150.00 PER ISSUE	\$85.00 / \$130.00 PER ISSUE	\$75.00 / \$110.00 PER ISSUE

Camera-ready Ads: ADDITIONAL 25% discount