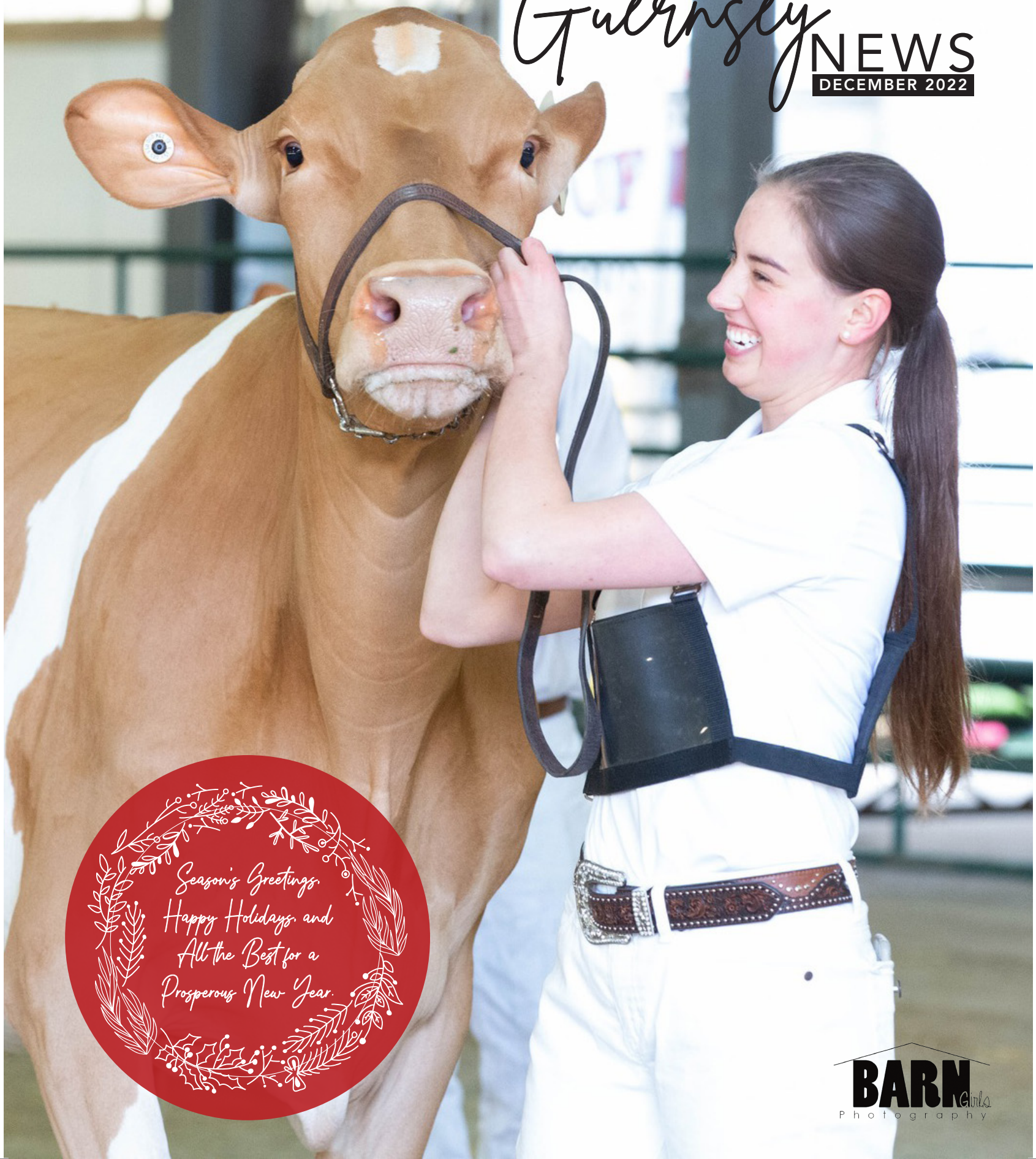




Guernsey NEWS

DECEMBER 2022



Season's Greetings.
Happy Holidays, and
All the Best for a
Prosperous New Year.

BARN clicks
Photography

Welcome NEW MEMBERS

GOLDEN HILL
Entreprise Familiale Kaiser Inc
a/s Christian Kaiser
Herménégilde, QC

GOLDEN SUNSET
Golden Sunset Farms Ltd
c/o Liesl Peters
Ile des Chênes, MB



Table OF CONTENTS

Information Sheet for New Guernsey Members	03
Invitation to the 2023 Annual General Meeting	04
President's Ramble	05
Goals for the Guernsey Breed: 2022 Update	06-07
Field Representative's Reflections	08
Fall 2022 Breed Improvement Committee Update	09
Administrative Message & Welcome to New Interim Bilingual Administrative Coordinator	10
2022 National Guernsey Show	11
Relaunching In Style! The National Guernsey Show Returns!	12
Judging results: National Championship Guernsey Show	13-15
Barn Girls Photography	16
Registrar's Message	17
Scholarship Winners	18
Production Records	19-22
Classification Schedule	22
Guernsey Breed Classifications	23
New Guernsey Hats	24
Guernseys in Quebec	25
Industry Recognition: Jessie Weir	26
Selection for Milk Caseins: Beta and Kappa	27-28
Hamilton-made Cheese Named Best in Canada at World Cheese Awards	29
Lactanet Canada Top 10 Brown Swiss Herds by LPI	30
Lactanet Canada Highlights by Breed	31
Guernsey News 2023 Schedule	32

Information Sheet

FOR NEW GUERNSEY MEMBERS

20 Corporate Place, Box 610, Brantford, ON, N3T 5R4
Phone: 1-855-756-8300, Fax: 519-756-3502

ADMINISTRATION:

Member & Customer Support Manager:
Linda Markle

Emilie Wallace

Phone: 1-855-756-8300, Ext 290
Email: guernseyinfo@holstein.ca
Website: www.guernseycanada.ca
Facebook: <https://www.facebook.com/GuernseyCanada/>

FIELD REPRESENTATIVE:

Russell Gammon
Phone: 226-751-3618
Email: rggammon1@gmail.com

REGISTRAR & CONTACT FOR MEMBERSHIP, REGISTRATIONS AND TRANSFERS:

Janine Eygenraam
Phone: 1-855-756-8300, Ext 283
Email: jeeygenraam@holstein.ca

Jerry Sumbler

Phone: 1-855-756-8300, Ext 202
Email: jsumbler@holstein.ca

Christopher Grice

Phone: 1-855-756-8300, Ext 257
Email: cgrice@holstein.ca

FIELD SERVICE BUSINESS PARTNERS:

NB, NS, PEI, NL: Natasha McKillop
Email: nmckillop@holstein.ca

MB, SK, AB, BC: Darren Isaac
Email: disaac@holstein.ca

Toby Kleinsasser
Email: tkleinsasser@holstein.ca

VISIT THE CANADIAN GUERNSEY WEBSITE WWW.GUERNSEYCANADA.CA FOR:

- Current Director Listing
- Fee Schedule
- By-Laws
- Create a web account with our Registrar to proceed with online services, order DairyTrace tags, view herd management or classification reports
- Breed History
- Animal Inquiry
- Applications: Membership, Registrations and Transfers
- Newsletters, Updates, Journals, etc.

CONTACTS

American Guernsey Association: www.usguernsey.com
Milk Recording: Lactanet: www.lactanet.ca
Classification: Holstein Canada: www.holsteincanada.ca

AI UNIT WEBSITES

ABS Global: www.absglobal.com
Alta Genetics: www.canada.altagenetics.com
CIAQ: www.ciaq.com
Cogent Canada: www.cogentcanada.com
EastGen: www.eastgen.ca
Genex: www.genexcanada.ca
Select Sires: www.selectsiresgenerations.com
Semex: www.semex.ca
ST: www.stgen.ca
WestGen: www.westgen.com

BOARD OF DIRECTORS

President: Jim Eby

Vice President: Paul Macleod

Board of Directors:

Christian Kaiser
Morris Bartlett
Alan Spence
Bruce Fuller
Colin Comfort

GUERNSEY CATTLE BREEDERS ASSOCIATION OF ONTARIO

President: Jocelyn Forster

Vice President: Scott Gordon

Board of Directors:

Ben Eby
Jim Eby
Colin Comfort
Morris Bartlett

BREED IMPROVEMENT COMMITTEE

Chair:

Scott Gordon

Committee Members:

Jim Eby
Rob Forster
Alan Spence
Christian Kaiser
Eric Leach
Bruce Fuller



**CANADIAN GUERNSEY ASSOCIATION
&
GUERNSEY CATTLE BREEDERS OF ONTARIO**

invite you to tentatively save the date for our:

ANNUAL GENERAL MEETING

Friday, March 17th 2023 at 10:30 AM

We are hoping to hold a hybrid meeting (virtually and in person)
at Holstein Canada Head Office in Brantford.

You will be required to pre-register in the spring.

We hope to host a guest speaker and have lunch together.

In the event of inclement weather, we will move to fully virtual.

We look forward to seeing you!

President's Ramble

Hello Guernsey Breeders,

We are well into the fall and winter is just around the corner. This is not a reality that most people cherish, but we are grateful for a return to some sense of normal, following two years of lockdowns. We were once again afforded the opportunity to attend farm shows, plowing matches, and fall fairs etc. It was great seeing pictures on Facebook of 4-H members in different parts of the country exhibiting quality guernsey calves.

A highlight for the breed was the return of the National Guernsey show at Ancaster Ontario on September 22. Thank you, Guernsey administration and field man Russell Gammon, for the hours of work you put into organizing and running the show in a professional manner. Thank you to judge Brent Howe for his competent judging and excellent reasons and comments. Thank you to everyone who sponsored the classes. Lastly, thank you to the exhibitors who put the effort into bringing their cattle out and showing them. Congratulations to all exhibitors as there were truly many impressive cattle on display.

In our day to day management decisions let us keep focused on achieving the goals the members adopted in regards to improving and advancing the Guernsey breed. There is a good number of Guernsey bulls available from

various breeding establishments to help us achieve these goals. Many of these bulls have sexed semen available. It is great to see dairymen with other breeds taking an interest in Guernseys and adding Guernsey cattle to their herds.

Not one breed has all the best qualities, but more and more people are discovering the Guernsey breed's best kept secret, which is the unbeatable quality of their milk. Another unmatched characteristic of Guernsey cattle is her docile temperament. We currently have a university student from Waterloo working part time on our farm. He is planning to apply for Vet college and has been travelling with our vet one day a week. He recently remarked that he has found it very interesting to experience the difference in the temperament of the Guernsey's to that of other breeds.

Wishing everyone a joy filled Christmas Season and health and success in the New Year.

- *Jim Eby*

National President / Eby Manor Ltd.



Goals for the Guernsey Breed

- **Increase the number of members** to 75 over the next three years.
- **Increase the number of registrations** to 500 per year over the next three years.
- **Increase national average production** to 375 kgs butterfat and 275 kgs protein by 2026.
- **Increase the number of Guernsey animals available for sale** through expanded use of embryo transfer, IVF, sexed semen, and cattle sales.
- **Continue to support and encourage production of Guernsey dairy products** by assisting producers to access high quality genetics. Continue to market the quality of the Guernsey cow, especially her milk.
- **Increase the number of animals** in the breed genomic tested and classified.
- **Reduce and eventually eliminate** monetary dependency on investment income.

2022 UPDATE

270 Canadian Born Registrations in 2021

MEMBERSHIP TYPE	COUNT
Annual	66
Honorary	7
Life	13

Once You Know What Your Goals Are, You Can Devote Yourself To Reaching Them!

In recent times the Board of the Canadian Guernsey Association (CGA) have given considerable thought to goals for the breed.

They arrived at a set of goals that are, at one and the same time challenging and yet attainable! You can see the goals presented with this article. Abundant fruit for the association will result from reaching these goals. These goals have become the prime focus of CGA efforts for the next half decade!

Memberships in the association have started to climb. Dairy producers are curious about the Guernsey breed. They have heard about and have been educated about the qualities of Golden Guernsey milk. Those who follow Guernsey activity more closely are aware that Guernsey milk is in high demand by niche market processors. Guernsey milk in fluid form and when transformed into hard

products is delicious and nutritious and yields extra product compared to average milk in the industry. How fortunate that a solid economic factor like milk quality and difference is driving demand for the breed.

As the number of members move toward and passed fifty, momentum will build. Attaining 75 members within the next three years will be easier than many think possible. Then, it will be time for a new goal. Providing proof that Guernseys can thrive in tie stall, free stall, bedded pack and robot barns will only expand demand for the breed and increase the number of Canadian dairy farms home to golden Guernseys. We envision a big comeback in the Prairie provinces, continued growth in Central Canada and a return to prominence in both Atlantic Canada and on the West Coast in BC! Watch what happens!

Registrations are the life blood of a breed association. Expanded registration numbers mean reduced dependence on interest income from investments

and more income from operations. The tools of importing genetics from the larger US population-embryos and live animals and more use of sexed semen will be the main driving forces in expanding numbers of Guernseys in Canada.

An expanded population will mean more ability to market Guernseys to keen new buyers. Guernseys will be easier to find and to buy. A very positive cycle of growth will be established.

Efficient production of valuable milk solids is the name of the game in Canadian dairying in this era. Thankfully the Guernsey is a solid breed with higher than average component tests. A clear and crisp focus on markedly increasing production of fat and protein will make the breed that much more attractive. It is time to delve into means of increasing yield of fat and protein in a cost-effective manner through management and genetic selection for higher yields. The sky is the limit but CGA goals are sensible and surely attainable. Isn't 2025 going to be an exciting time for the Guernsey breed? Are you stoked?

We have such wonderful tools readily available to make more Guernseys via use of embryo transfer and IVF technology! These are other key routes to breed expansion and lifting the overall quality level of the national herd!

CGA makes abundant mention of use of Guernsey milk for specialty dairy products in our social media work. Guernsey products are top drawer and thus attract consumer attention. This makes them a definite profit center for processors. Guernsey milk commands premium prices. Once again it is all about the milk.

The Breed Improvement Committee is working on a plan to assist members with the cost of genomic testing of Guernsey females. The Board has approved a significant investment in reducing the cost of genomic testing to members! This is an uber-exciting means of expanding interest in the breed and of knowledge of the genetics found within the breed! Stay tuned for more details! We're preparing for growth!

As you can see the goals of the association are future-oriented, progressive, modern and profit-oriented for Guernsey owners! The only time better than today to be a Guernsey owner, breeder and dairy producer will be the future!

CGA invites you to embrace these goals take part in reaching them and then experience great flourishing of the golden breed in Canada. It's time to flip the script and launch out in to growth territory! Won't the future be so awesome!?

Average Production by Breed

BASED ON OFFICIAL - SUPERVISED RECORDS IN CANADA

	Number of Records	Milk kg	Fat		Protein		BCA		
			kg	%	kg	%	Milk	Fat	Protein
2021	304	7,394	344	4.67%	257	3.48%	226	209	220
2020	324	7,285	337	4.65%	254	3.50%	223	206	218
2019	278	7,276	344	4.74%	255	3.51%	219	206	216
2018	295	7,273	340	4.71%	251	3.47%	220	206	213
2017	317	7,389	351	4.77%	254	3.46%	222	210	214
2016	351	7,086	331	4.69%	241	3.42%	214	199	205
2015	384	6,730	313	4.67%	228	3.40%	203	189	194
2014	370	6,759	315	4.69%	231	3.43%	205	191	197
2013	375	6,952	322	4.64%	239	3.45%	211	195	204
2012	374	6,831	313	4.60%	234	3.44%	207	190	200

BCA: Breed Class Average

Source: Agriculture and Agri-Food Canada

Compiled by Agriculture and Agri-Food Canada, Animal Industry Division, Market Information Section



Field Representative's Reflections

GUERNSEY RISING...AND RISING!

Since our last report in a newsletter much has happened!

The National Guernsey Show was re-launched at Ancaster Fair on September 22. A report of action appears on page 12, but we'll note here that the quality of animals exhibited was good for the breed and the enthusiasm and camaraderie of Guernsey owners was on full display!

Since our last report we are thrilled to share that the Peters family who have a significant dairy operation near Winnipeg, Manitoba have purchased four top Guernsey heifers from British Columbia. The Peters family have a decades ago history with Guernseys in BC. The younger generation of the family had a real hankering to work with some Golden Guernseys and have been researching possible sources for over a year. This is a highly momentous happening as Guernseys have been in very high demand and very low supply in the Prairie provinces. There has been some investment in Guernsey genetics in Alberta. In this era Guernsey revivals and comebacks have been common and we're expecting more! The Peters family quickly applied for membership in CGA!

Speaking of applications for membership we're pleased to report that Caitlin Hoogenraad from Athens, Ontario has very recently applied for membership in CGA. There were 313 dairy heifers shown by an equal number of 4-H members in the TD Canadian Dairy 4-H Classic show at the Royal Agricultural Winter Fair in Toronto, Ontario in early November. Caitlin showed the sole Guernsey heifer qualifying for the big show. The heifer is bred by Ronnie and Heidi Dunster of Mallorytown, in Eastern Ontario. Her name is Lillies Prancer Pharmer and she was born in January 2022. This fine heifer is sired by Dairyman Toby Farmer and is out of a Warrindale-bred daughter of Lindrian Grumpy Pilot. There is great value in having even one Guernsey in front of such a large audience!!! Thank you, Caitlin!

We've very recently been informed that our conscientious and capable Guernsey lead for customer service, Janine Eygenraam at Holstein Canada has recently been doing some registration catch up work with a multiple breed herd

in Eastern Ontario. The herd includes a significant Guernsey component so will move our 2022 registration numbers up! (page 6) Speaking of registrations and memberships you'll see a presentation of CGA goals for the mid-term future in this issue. This will serve as a practical reminder of where we are headed as a breed and as an association.

We have been working with other Guernsey buyers and owners to confirm identity of cattle they own so they can be added to the Canadian herd book. Sometimes this work is challenging but as long as one is making forward steps there is impetus to continue.

We have been collecting material for more social media posts and want to thank those who have been actively posting photos of Guernseys at work, grazing, at shows and other events. Promise Valley Farm on Vancouver Island does exceptional work on Instagram as does Mark Droogers in Western Ontario. So do numerous other Guernsey owners! Visibility is everything for a breed! In that vein we really appreciate all of the efforts to exhibit Guernseys via 4-H shows or open shows or have them on display at fairs. Guernseys have appeared at shows in Western Quebec-thanks Kaiser family and in Nova Scotia-thanks Fuller and Dillman families and at various 4-H shows in Ontario. Showing up is crucial breed promotion.

The upcoming dispersal of the famed Lindrian herd owned by the Tamis family in the Lower Mainland of BC is tinged with sadness but what an opportunity for spreading great Guernseys into more dairy herds! What a magnificent run the Lindrian herd has had! Bravo, thanks!

Thanks to Nicky Barnard and Linda Markle and their associates at Holstein Canada for their high quality input to Guernsey activities!

We're going to keep moving on finding new and better ways to wave the Guernsey flag far and wide! If you have some ideas let us know!

- Russell Gammon

National Field Representative for CGA

Fall 2022 Breed Improvement

COMMITTEE UPDATE

The hay and corn silage are done for the year so I finally have some time to update everyone on a couple things the committee has been working on.

Every couple of years our committee meets with a classifier on farm to evaluate our scorecard and measurements as well as get the classifiers perspective on trends within the breed. We talk about changes that we want or need to make and with their help come up with a plan that best meet the needs of the breed. The Guernsey breed has a relatively small number of cows classified each year so it will take a few years to see how our changes will affect the bull proofs but it will affect classification scores immediately. As always, we are striving to have the most accurate information going into the system so we have the same coming out. After our meeting with Classification Coordinator, Bruno Jubinville, we felt 2 areas needed some

tweaking. We felt we needed to change our measurements for udder depth and rear udder height to better reflect what a Guernsey 2-year old's udder looks like. We had too many with high rear udder scores and we weren't hard enough on the ones with deep udders as 2-year-olds. I will put a more in-depth explanation of the measurements in my annual report a couple months from now.

We are also trying to get our Grand and Junior Champions from our National Show into the Supreme Champion class at the Royal Winter Fair! We feel this would be very good exposure for the breed. We have not received confirmation from the Royal as of yet but hopefully soon.

Respectfully submitted

Scott Gordon



Administrative Message

A Great year with Guernsey!

Well it feels like this year has flown by as I've gotten to know the ropes for the Guernsey Associations! From the publications and inventory and archival to the planning of the Ancaster National Show and board meetings I have thoroughly enjoyed my first year as the administrator for Guernsey! However as of this Christmas I will be taking maternity leave as my husband and I await our first child in January. I have enjoyed my time very much getting to know the board and its members and hope to return to working with these passionate people, who are diligently working on breed improvement and exposure. Their dedication to the breed will take the breed far and their passion has made this an exciting position to dive into. I would like to welcome and introduce my interim replacement for 2023, Emilie Wallace. She comes to the table with almost 10 years' experience at Holstein Canada, a can-do attitude with a willingness to help and I have no doubt she will thrive in the role. I have sincerely enjoyed working with the breed this year and hope to see you all in 2024!

Best wishes to you all during the Christmas Season.

- Nicky Barnard

NEW INTERIM BILINGUAL ADMINISTRATIVE COORDINATOR



Hello. My name is Emilie Wallace and I will be joining the Canadian Guernsey Association as the new temporary bilingual administrative coordinator. I've been with Holstein Canada for a little over 9 years now, having three different positions, and I am always willing to learn new things. Please feel free to reach out to me by phone at **1-855-756-8300 ext 290** or by emailing me at **ewallace@holstein.ca**



2022 NATIONAL Guernsey Show



Relaunching In Style!

THE NATIONAL GUERNSEY SHOW RETURNS!

We had a spectacular assembly of volunteers and helpers from Holstein Canada to present the show. At the center of CGA activities is Nicky Barnard who did an extraordinary amount of work to prepare for the show. Unfortunately, Nicky was not able to be present for the show. Her extensive prep work for the event was deeply appreciated by both the exhibitors and the team who brought her efforts to fruition on show day!

Among those assisting with vim and vigour were: Alison Karn, Pat Hill and freshly minted Interim CEO, Linda Markle of Holstein Canada.

Harry Emmott from Paris assisted Judge Howe in the ring as ring man, a role he fills with ease and grace.

Marie Hartley McNabb served as unflappable and perfectly toned announcer for the show. Her husband, Ken McNabb assisted Mel O'Shea of Barngirls Photography with picture making.

These generous and capable people kept everything on track and in perfect running order. THANKS to everyone on the Guernsey shoe dream team. Staff of Ancaster Fair were totally helpful in preparing for the show.

Special Thank You

TO OUR NATIONAL SHOW SPONSORS!

We would like to thank all the people and businesses that provided a sponsorship to our National Show for 2022. Your sponsorships help promote and support our breed and we are grateful for your contributions!

Callumlea Farms: Ken and Marie McNabb
Broadview Farms: Rob Beynon
Bruce and Sherry Telfer
Ken D. Foster
Lactanet

Eby Manor Farms Inc.
EastGen
Niagara Guernsey Association
Ontario Joint Dairy Breeds
Upper Canada Cheese Company

National Championship Guernsey Show**National Championship Guernsey Show, Pee Wee Showmanship****Rank Farm**

4th ARIANA TENHOVE

National Championship Guernsey Show, Junior Showmanship**Rank Farm**

1st MADISON BARTLETT

2nd BROCK BARTLETT

3rd CAITLYNN NOBLE

5th BRANDON BARTLETT

6th DEBRA EBY

National Championship Guernsey Show, Junior Calf

born on or after March 1st, 2022

Rank #	Farm	Animal	Animal Reg#	Sire
1st 4	GOLDEN MEADOWS HOMESTEAD	MAPLEHURST RAINBOW	10411	JAGUAR
2nd 5	ROB FORSTER	MAPLEHURST JAGUAR ARLIE	13900645	SPRINGHILL JOKES JAGUAR
3rd 2	BYDAND FARM	DON HAVEN JCP VIBRANT	14173421	SPRINGHILL JC PENNEY
4th 3	EBY MANOR FARM INC	EBY MANOR INDIGO WAVERLY	14028748	EBY MANOR INDIGO
5th 1	BYDAND FARM	DON HAVEN VENGEANCE VANNA	14173422	MARODORE RANDALLS VENGEANCE

National Championship Guernsey Show, Intermediate Calf

born December 1st, 2021 to February 28, 2022

Rank #	Farm	Animal	Animal Reg#	Sire
1st 8	COMFORT FARMS	COMFORT FARMS JAVA ADELE	14211827	SPRINGHILL JAVA-ETV-P
2nd 6	COMFORT FARMS	COMFORT FARMS V DAWN	14211828	MARODORE RANDALLS VENGEANCE
3rd 7	EBY MANOR FARM INC	EBY MANOR JC PENNY KENDALL	14028741	SPRINGHILL JC PENNY

National Championship Guernsey Show, Senior Calf

born September 1st, 2021 to November 30th, 2021

Rank #	Farm	Animal	Animal Reg#	Sire
1st 10	COMFORT FARMS	COMFORT FARMS JAEGERGRET	14211820	ABIQUA ACRES LEVIS JAEGER
2nd 9	BYDAND FARM	DON HAVEN EXCALIBUR VELDA	14173412	BEECHGROVES EXCALIBUR

National Championship Guernsey Show, Intermediate Yearling

born March 1st, 2021 to August 31st, 2021

Rank #	Farm	Animal	Animal Reg#	Sire
1st 14	BYDAND FARM	DON HAVEN INDIGO VIRTUE	13842805	EBY MANOR INDIGO
2nd 16	LONDON DAIRY FARMS	LEGEND DAIRY PHARMER ERICA	13783325	DAIRYMAN TOBY PHARMER
3rd 12	BYDAND FARM	DON HAVEN EXCALIBUR VOODOO	14173408	BEECHGROVES EXCALIBUR
4th 15	EBY MANOR FARM INC	EBY MANOR INDIGO JILLIAN	14028715	EBY MANOR INDIGO
5th 11	MAPLEHURST FARM	MAPLEHURST PILOT PEONY	13900630	LINDRIAN GRUMPY PILOT
6th 13	COMFORT FARMS	COMFORT FARMS PILOT MISS MOL	12936178	LINDRIAN GRUMPY PILOT

National Championship Guernsey Show, Senior Yearling

born September 1st, 2020 to February 28th, 2021

Rank #	Farm	Animal	Animal Reg#	Sire
1st 19	BYDAND FARM	MAPLEHURST LEGEND WILDERN	13900604	COULEE CREST GRUMPY LEGEND
2nd 18	MAPLEHURST FARM	MAPLEHURST DRONE TRICK	13900607	HI GUERN VIEW LEVI DRONE
3rd 17	COMFORT FARMS	COMFORT FARMS FAIR LADY	12936170	BEECHGROVES EXCALIBUR

National Championship Guernsey Show, Junior Champion Female

Junior Champion

Female

DON HAVEN INDIGO VIRTUE

SCOTT GORDON, ROCKWOOD, ON

National Championship Guernsey Show, Reserve Junior Champion

Reserve Junior

Champion

MAPLEHURST LEGEND WILDERNESS

SCOTT GORDON, ROCKWOOD, ON

National Championship Guernsey Show, Junior Herd - Group of 3 Junior females.

Exhibitor must have bred all three and own at least two. Each animal must have shown in the appropriate age class.

Rank	#	Exhibitor	Farm
1st	20	SCOTT GORDON	BYDAND FARM
2nd	23	COMFORT FARMS	COMFORT FARMS
3rd	22	JAMES EBY	EBY MANOR FARM INC
4th	21	JOCELYN FORSTER	MAPLEHURST FARM

National Championship Guernsey Show, Dry Cow

Must have completed one lactation

Rank	#	Farm	Animal	Animal Reg#	Sire
1st	26	LONDON DAIRY FARMS	MAPLEHURST GRUMPY BINOO	11356234	GOLDEN J RONALD GRUMPY
2nd	25	LONDON DAIRY FARMS	MAPLEHURST LEGENDS LEGACY	12292442	COULEE CREST GRUMPY LEGEND
3rd	24	COMFORT FARMS	COMFORT FARMS LEE ANN	12936137	PINE RIDGE DOUBLE L

National Championship Guernsey Show, Female - 2 year old

born September 1st, 2019 to August 31st, 2020

Rank	#	Farm	Animal	Animal Reg#	Sire
1st	27	MAPLEHURST FARM	MAPLEHURST DRONE PEARL	13262827	HI GUERN VIEW LEVI DRONE
2nd	30	MAPLEHURST FARM	MAPLEHURST DRONE DOMINO	13262814	HI GUERN VIEW LEVI DRONE
3rd	28	EBY MANOR FARM INC	EBY MANOR LEGEND WHISPER	13520646	COULEE CREST GRUMPY LEGEND
4th	29	COMFORT FARMS	COMFORT FARMS AELLA	12936150	LANG HAVEN GRUMPY NOVAK
5th	31	COMFORT FARMS	COMFORT FARMS MARYLIE	12936144	LANG HAVEN GRUMPY NOVAK

National Championship Guernsey Show, Female - 3 year old

born September 1st, 2018 to August 31st, 2019

Rank	#	Farm	Animal	Animal Reg#	Sire
1st	34	LONDON DAIRY FARMS	SPRINGHILL PYTHON JUNO	315159142	LINDRIAN PYTHON
2nd	36	EBY MANOR FARM INC	EBY MANOR LEGEND WISH	12949191	COULEE CREST GRUMPY LEGEND
3rd	33	COMFORT FARMS	COMFORT FARMS MARIBEL	12936127	COULEE CREST GRUMPY LEGEND

National Championship Guernsey Show, Female - 4 year old

born September 1st, 2017 to August 31st, 2018

Rank	#	Farm	Animal	Animal Reg#	Sire
1st	38	EBY MANOR FARM INC	EBY MANOR NOVAK LEMON	12949169	LANG HAVEN GRUMPY NOVAK
2nd	37	COMFORT FARMS	COMFORT FARMS AURORA	12936100	COULEE CREST CONQUEROR LOGO

National Championship Guernsey Show, Female - 5 year old

born prior to September 1st, 2017

Rank	#	Farm	Animal	Animal Reg#	Sire
1st	41	LONDON DAIRY FARMS	MAPLEHURST PILOT TREAT	12292464	LINDRIAN GRUMPY PILOT
2nd	39	EBY MANOR FARM INC	EBY MANOR LEVI WINDY	1.24401E+12	LAND OF LIVING RO LEV-HET
3rd	42	COMFORT FARMS	COMFORT FARMS LUMEN	11902324	LINDRIAN GRUMPY PILOT
4th	40	COMFORT FARMS	COMFORT FARMS MELANIA	11902338	FOUR WINDS DYNAMIC

National Championship Guernsey Show, Grand Champion Female

Grand
Champion
Female

MAPLEHURST PILOT TREAT
ERIC SALONEN, LONDON, ON

National Championship Guernsey Show, Reserve Grand Champion Female

Perpetual trophy presented by Bruce Telfer, Grandview Farms, Paris, ON

Reserve Grand	EBY MANOR NOVAK
Champion	LEMON
Female	JAMES EBY, WATERLOO, ON

National Championship Guernsey Show, Breeder's Herd

- A group of 3 females.

Exhibitor must have bred all 3 animals and own at least two. Each animal in the group must have been exhibited in the appropriate age class for single animals

Rank	#	Exhibitor	Farm
1st	45	JOCELYN FORSTER	MAPLEHURST FARM
2nd	46	JAMES EBY	EBY MANOR FARM INC
3rd	43	COMFORT FARMS	COMFORT FARMS
4th	44	SCOTT GORDON	BYDAND FARM

National Championship Guernsey Show, Progeny of Dam

Two females with the same dam.

Rank	#	Farm	Animal	Animal Reg#	Sire
1st	49	EBY MANOR FARM INC	EBY MANOR LEGEND W	12949191	
2nd	48	MAPLEHURST FARM	MAPLEHURST DRONE PEA	13262827	HI GUERN VIEW LEVI DRONE
3rd	50	COMFORT FARMS			
4th	47	BYDAND FARM	DON HAVEN INDIGO VIRT	13842805	EBY MANOR INDIGO

National Championship Guernsey Show, Herdsman Award

Donated by: Ken & Marie McNabb

Rank	#	Farm
1st		BYDAND FARM
2nd		MAPLEHURST FARM
3rd		EBY MANOR FARM INC
4th		COMFORT FARMS

-Neatness of exhibit and areas immediately adjacent 30 points -Appearance of Animals 30 points -Attractiveness of signs, information or breed

National Championship Guernsey Show, Best Udder

Judge shall designate one best udder in each milking class (10-13)

Best Udder	EBY MANOR LEGEND WHISPER JAMES EBY, WATERLOO, ON
Best Udder	SPRINGHILL PYTHON JUNO ERIC SALONEN, LONDON, ON
Best Udder	EBY MANOR NOVAK LEMON JAMES EBY, WATERLOO, ON
Best Udder	MAPLEHURST PILOT TREAT ERIC SALONEN, LONDON, ON

National Championship Guernsey Show, Highest Composite BCA Award

Cow in the championship class with the highest Composite BCA score. DHI RECORDS must be available at ringside.

National Championship Guernsey Show, Premier Exhibitor

Premier Exhibitor	COMFORT FARMS, ST. ANNS, ON
Reserve	EBY MANOR FARM INC / JAMES EBY, WATERLOO, ON

National Championship Guernsey Show, Premier Breeder

Premier Breeder	ROB FORSTER (MAPLEHURST), LYNDEN, ON
Reserve	COMFORT



Barn Girls Photography

We headed to the Ancaster Fair to photograph the Canadian Guernsey Association's National Guernsey show. A small show, but it was a pleasure to capture the memories made! Congratulations to the breeders and exhibitors! Thank you so much to the Association and Russell Gammon for inviting us!

JUNIOR CHAMPION:

DON HAVEN INDIGO VIRTUE EXHIBITED BY BYDAND FARM

RESERVE JUNIOR CHAMPION:

MAPLEHURST LEGEND WILDERNESS EXHIBITED BY BYDAND FARM

GRAND CHAMPION:

MAPLEHURST PILOT TREAT EXHIBITED BY LONDON DAIRY FARMS LTD.

RESERVE GRAND CHAMPION:

EBY MANOR NOVAK LEMON EXHIBITED BY EBY MANOR LTD.

The full album from the 2022 National Guernsey Show is now available on our website.

To purchase digital downloads or prints please visit:
<https://barngirls.smugmug.com/2022-National-Guernsey-Show/>



Registrar's Message

Hello members,

As I sit here writing, I can't believe how the year has flown by. I hope you had a good summer and that you are well on your way to finishing the harvest this year.

As I reflect on Thanksgiving just gone by, I realize that I have many things to be Thankful for among which are the beautiful fall colours we have experienced this year. I am also thankful for some time off I could take in September.

I was able to help out a bit more at the farm I work at and was also able to be part of my sister's wedding.

Unfortunately, my sister's wedding fell on the same weekend as the National Guernsey Show so I wasn't able to go to both. I did see some of your Facebook posts showing some of the highlights of the show. I would like to congratulate all the winners and all the exhibitors!

Here at the office, I am still at the same phone number and extension so if I can help in any way, just give me a call. I would love to chat with you.

(Picture: my nephew and I all dressed up for the wedding)

- *Janine Eygenraam*, *Christopher Grice*, *Jerry Sumbler*
Registrar Customer Service Customer Service

You can reach us at 1-855-756-8300

Janine Eygenraam: Ext. 283 or jeeygenraam@holstein.ca

Christopher Grice: Ext. 257 or cgrice@holstein.ca

Jerry Sumbler: Ext. 202 or jsumbler@holstein.ca

Scholarship Winners

GUERNSEY CATTLE BREEDERS ASSOCIATION OF ONTARIO

The GUERNSEY CATTLE BREEDERS ASSOCIATION OF ONTARIO would like to congratulate the winners of this years and last year's Guernsey Scholarship awards Funded by Big 4, Quinte and Western Guernsey Clubs and in memory of Lillian Beckett & John Y McNabb. Congratulations to Caitlynn Noble and Kayla Gordon!

Both applicants' submissions were approved by the board to receive this award towards their education. Caitlynn Noble will be awarded one scholarship retroactively for 2021 and Kayla Gordon will be awarded this year's award for 2022.

We wish you all the best in your studies!

Stay tuned this spring and take advantage of a NEW National version of the scholarship certificate with updated criteria and grant increase.



Production Records

LACTATION RECORDS COMPLETED BETWEEN DECEMBER 2021 - NOVEMBER 2022, LISTED BY COMPOSITE BCA

Yearlings		Class	Yr	Mth	M	F	%F	P	%P	M	F	P	Comp BCA	Owner	
GUCANF13408843	FULLER VIEW BEAU GISELLE	GP	81	1	11	9312	406	4.4	298	3.2	319	280	287	886	FULLER VIEW FARM, J. FULLER, MUSQIE VALLEY FA, NS
GUCANF12949202	EBY MANOR LEGEND FERGIE	GP	81	1	11	9708	392	4	289	3	329	268	275	872	EBY MANOR LTD, ON
GUCANF13404285	DON HAVEN LEGEND VEGAS	GP	82	1	11	8208	363	4.4	294	3.6	301	265	303	869	SCOTT GORDON, ON
GUCANF13520629	EBY MANOR NOVAK SHEILA	G	78	1	10	8422	366	4.3	255	3	314	271	268	853	EBY MANOR LTD, ON
GUCANF13520627	EBY MANOR NOVAK VICKY	G	79	1	11	8449	336	4	280	3.3	311	245	289	845	EBY MANOR LTD, ON
GUCANF13404284	DON HAVEN LADY VERONA	G	77	1	11	8140	323	4	263	3.2	298	236	271	805	SCOTT GORDON, ON
GUUSAF97008512	COULEE CREST BUMMER LARITA	G	79	1	11	7752	352	4.5	243	3.1	287	261	254	802	ENTREPRISE FAMILIALE KAISER INC, QC
GUCANF12949208	EBY MANOR BEAU EMERALD	GP	82	1	11	8035	387	4.8	262	3.3	277	269	254	800	EBY MANOR LTD, ON
GUCANF13233177	LINDRIAN LUCKY JAGUAR	VG	87	1	9	7784	364	4.7	258	3.3	276	260	258	794	JOHN & LINDA TAMIS, BC
GUCANF12949218	EBY MANOR LIGHTNING SHIMMER	G	79	1	11	7464	351	4.7	241	3.2	273	256	248	777	EBY MANOR LTD, ON
GUCANF13262801	MAPLEHURST LADYSMAN FAMOUS			1	11	7048	377	5.3	217	3.1	259	277	224	760	FULLER VIEW FARM, J. FULLER, MUSQIE VALLEY FA, NS
GUCANF12949191	EBY MANOR LEGEND WISH	VG	87	1	11	7044	328	4.7	258	3.7	250	233	258	741	EBY MANOR LTD, ON
GUCANF13520622	EBY MANOR NOVAK TAMAR	GP	81	1	11	6590	328	5	233	3.5	244	243	243	730	EBY MANOR LTD, ON
GUCANF13400991	WINTERHIME LM PEPPERMINT	G	79	1	8	6991	316	4.5	226	3.2	258	236	235	729	LISA FREEZE, NB
GUCANF12949214	EBY MANOR BEAU LUCILLE	VG	85	1	11	6820	350	5.1	242	3.5	240	246	240	726	EBY MANOR LTD, ON

Jr. 2 Yr Old		Class	Yr	Mth	M	F	%F	P	%P	M	F	P	Comp BCA	Owner	
GUCANF12949188	EBY MANOR LIGHTNING JACLYN	GP	83	2	5	8825	424	4.8	326	3.7	284	274	296	854	EBY MANOR LTD, ON
GUCANF12949201	EBY MANOR LIGHTNING WILMA	GP	81	2	1	8594	388	4.5	290	3.4	291	264	276	831	EBY MANOR LTD, ON
GUCANF13159219	GREYSTONE NOVAK FELICITY	VG	85	2	4	8765	422	4.8	290	3.3	280	271	261	812	FULLER VIEW FARM, J. FULLER, MUSQIE VALLEY FA, NS
GUCANF13404283	DON HAVEN LADY VAVA	GP	80	2	0	7284	378	5.2	252	3.5	265	276	257	798	SCOTT GORDON, ON
GUUSAF97007844	COULEE CREST HERALD LOVE	GP	82	2	1	7853	366	4.7	257	3.3	280	260	257	797	ENTREPRISE FAMILIALE KAISER INC, QC
GUCANF13048090	MAPLEHURST PISTOLL ZOE	GP	82	2	0	8267	373	4.5	271	3.3	280	254	258	792	NATIONAL MUSEUM OF SCIENCE & TECHNOLOGY CORP., ON
GUCANF12962112	RANDALE PRADA 352	GP	82	2	1	8063	350	4.3	265	3.3	270	235	250	755	RANDY GUERNSEY, ON
GUCANF13253890	BEAVERWOOD DAWSONS GLORY			2	1	7229	330	4.6	248	3.4	262	237	253	752	BEAVERWOOD FARMS INC., NB
GUCANF12949211	EBY MANOR LATIMER JILL			2	1	7304	336	4.6	256	3.5	256	233	251	740	EBY MANOR LTD, ON
GUCANF12949198	EBY MANOR LADYS MAN LYDIA	GP	80	2	0	8094	319	3.9	253	3.1	275	218	241	734	EBY MANOR LTD, ON
GUCANF13520621	EBY MANOR NOVAK WISDOM	VG	85	2	4	8280	352	4.2	266	3.2	264	226	240	730	EBY MANOR LTD, ON
GUCANF111375784	JENS GOLD NOVAK 5784	GP	81	2	0	7116	309	4.3	233	3.3	259	224	238	721	FERME IMPERIALE SENC., QC
GUUSAF97007372	COULEE CREST NET WORTH EDEN ET	GP	82	2	2	7519	336	4.5	248	3.3	251	226	232	709	FERME IMPERIALE SENC., QC
GUCANF12949197	EBY MANOR LADYS MAN LILAC	GP	80	2	1	7717	312	4	245	3.2	259	211	231	701	EBY MANOR LTD, ON
GUCANF12949216	EBY MANOR LADYS MAN EPIPHANY	GP	82	2	1	6622	308	4.7	229	3.5	240	222	234	696	EBY MANOR LTD, ON

Sr. 2 Yr Old		Class	Yr	Mth	M	F	%F	P	%P	M	F	P	Comp BCA	Owner	
GUCANF12949184	EBY MANOR LEGEND INDIGO	G	79	2	11	8550	414	4.8	306	3.6	283	271	286	840	EBY MANOR LTD, ON
GUCANF12949199	EBY MANOR LIGHTNING PEYTON	G	73	2	6	7978	395	5	271	3.4	272	267	261	800	EBY MANOR LTD, ON
GUCANF12949173	EBY MANOR LIGHTNING DENISE	GP	81	2	6	8148	376	4.6	273	3.4	268	246	253	767	EBY MANOR LTD, ON
GUCANF12949172	EBY MANOR NOVAK WINDSOR	GP	80	2	11	8501	401	4.7	282	3.3	258	243	241	742	EBY MANOR LTD, ON
GUCANF13253868	BEAVERWOOD LAKODA FLICKA			2	10	7518	341	4.5	272	3.6	247	223	252	722	BEAVERWOOD FARMS INC., NB

Production Records

LACTATION RECORDS COMPLETED BETWEEN DECEMBER 2021 - NOVEMBER 2022, LISTED BY COMPOSITE BCA

Sr. 2 Yr Old		Class	Yr	Mth	M	F	%F	P	%P	M	F	P	Comp BCA	Owner	
GUCANF12842275	CARDINAL CREEK LEGEND 132			2	10	7975	328	4.1	262	3.3	263	214	243	720	CARDINAL CREEK HOLSTEINS, ON
GUCANF12793005	BEAVERWOOD RANDALL FAYE			2	10	7414	329	4.4	277	3.7	226	201	237	664	BEAVERWOOD FARMS INC., NB
GUCANF12936106	COMFORT FARMS LUA	GP	82	2	6	7971	303	3.8	251	3.1	249	189	220	658	COMFORT FARMS LTD, ON
GUCANF13253872	BEAVERWOOD PILOTS FLOSS			2	6	6379	329	5.2	236	3.7	211	215	221	647	BEAVERWOOD FARMS INC., NB
GUCANF13253864	BEAVERWOOD KAKADU FIRE			2	6	6683	323	4.8	250	3.7	213	207	223	643	BEAVERWOOD FARMS INC., NB
GUCANF13253865	BEAVERWOOD LAKODA FELICITY			2	7	6436	330	5.1	246	3.8	206	210	222	638	BEAVERWOOD FARMS INC., NB
GUUSAF97007468	KEIMS ERNIE WILLOW	GP	83	2	9	6298	315	5	220	3.5	212	209	208	629	FERME IMPERIALE SENC., QC
GUCANF12936108	COMFORT FARMS ALLEGRA	G	74	2	11	6294	284	4.5	206	3.3	208	186	193	587	COMFORT FARMS LTD, ON
GU840F3200732138	DAIRYMAN BEAU 4218 NEWTON	G	79	2	11	6271	347	5.5	222	3.5	188	208	187	583	FERME IMPERIALE SENC., QC
GUCANF12793014	BEAVERWOOD LCS FOXY			2	6	6383	285	4.5	222	3.5	200	178	195	573	BEAVERWOOD FARMS INC., NB
GUCANF12949176	EBY MANOR ERNIE DEKOTA	VG	86	3	2	7889	366	4.6	276	3.5	252	232	249	733	EBY MANOR LTD, ON
Jr. 3 Yr Old		Class	Yr	Mth	M	F	%F	P	%P	M	F	P	Comp BCA	Owner	
GUCANF12677227	LINDRIAN PROSPER LADYSMAN	G	77	3	4	11251	544	4.8	394	3.5	358	338	352	1048	CALVIN HEINRICHS, BC
GUCANF13072232	DON HAVEN LATIMER VI	EX	90	3	0	9983	455	4.6	348	3.5	324	292	316	932	SCOTT GORDON, ON
GUCANF12677235	LINDRIAN LEGEND BOMBAY	GP	81	3	1	10187	426	4.2	359	3.5	328	271	323	922	JOHN & LINDA TAMIS, BC
GUCANF12949180	EBY MANOR ERNIE RAELYNN	VG	85	3	3	9448	448	4.7	325	3.4	303	280	293	876	EBY MANOR LTD, ON
GUCANF12063019	EBY MANOR JULIUS JOCELYN	GP	82	3	3	10045	508	5.1	345	3.4	291	292	280	863	EBY MANOR LTD, ON
GUCANF12949174	EBY MANOR ERNIE LEMONAID	VG	86	3	2	9577	449	4.7	315	3.3	300	279	276	855	EBY MANOR LTD, ON
GUUSAF97002914	COULEE CREST NAVAJO LARINAH			3	2	10266	435	4.2	313	3	318	265	272	855	FERME IMPERIALE SENC., QC
GUCANF12949182	EBY MANOR LIGHTNING FELICIA	GP	80	3	4	9758	490	5	340	3.5	287	285	281	853	EBY MANOR LTD, ON
GU840F3132543261	OAK KNOB TOBY WRINKLE	G	78	3	0	8461	486	5.7	323	3.8	259	295	276	830	ENTREPRISE FAMILIALE KAISER INC, QC
GUCANF13159210	GREYSTONE LIGHTNING FLASH	VG	85	3	5	8209	471	5.7	300	3.6	262	294	268	824	FULLER VIEW FARM, J. FULLER, MUSQIE VALLEY FA, NS
GUCANF12677224	LINDRIAN ERNIE POPPET	VG	85	3	0	9398	418	4.5	306	3.3	287	253	262	802	JOHN & LINDA TAMIS, BC
GUCANF12949171	EBY MANOR LIGHTNING JORDAN	VG	85	3	3	8608	439	5.1	282	3.3	273	276	252	801	EBY MANOR LTD, ON
GUCANF12949175	EBY MANOR ERNIE IDAHO	GP	80	3	2	8740	415	4.8	279	3.2	274	258	245	777	EBY MANOR LTD, ON
GUCANF12949165	EBY MANOR JULIUS PEACH	VG	85	3	3	8619	416	4.8	293	3.4	257	246	246	749	EBY MANOR LTD, ON
GUCANF13046593	CALLUMLEA NOVAK HELEN	GP	81	3	2	7107	448	6.3	253	3.6	229	284	230	743	KENNETH MCNABB, ON
GUCANF12949176	EBY MANOR ERNIE DEKOTA	VG	86	3	2	7889	366	4.6	276	3.5	252	232	249	733	EBY MANOR LTD, ON
Sr. 3 Yr Old		Class	Yr	Mth	M	F	%F	P	%P	M	F	P	Comp BCA	Owner	
GU840F3141224542	JENS GOLD PROFIT EUNICE	G	71	3	10	10595	421	4	358	3.4	299	238	284	821	FERME IMPERIALE SENC., QC
GUCANF12792981	BEAVERWOOD LEVI'S ELISE			3	11	8916	447	5	333	3.7	265	263	278	806	BEAVERWOOD FARMS INC., NB
GUCANF12615118	DON HAVEN KAKADU VELMA	VG	85	3	9	9441	404	4.3	317	3.4	281	237	264	782	SCOTT GORDON, ON
GUCANF12792991	BEAVERWOOD NAVARRO'S ELIANNA			3	9	8478	391	4.6	304	3.6	265	240	267	772	BEAVERWOOD FARMS INC., NB
GUCANF12949169	EBY MANOR NOVAK LEMON	EX	90	3	11	8851	465	5.2	318	3.6	245	257	248	750	EBY MANOR LTD, ON
GUCANF12251490	BEAVERWOOD GOTCHAS DESSY			3	7	7758	384	5	277	3.6	241	236	241	718	BEAVERWOOD FARMS INC., NB
GUUSAF97004435	COULEE CREST LADYSMAN LEANN ET	GP	81	3	8	8213	384	4.7	274	3.3	248	229	232	709	TREBLE L SYNDICATE & ENTREPRISE FAMILIALE KAISER, QC
GUCANF11902349	COMFORT FARMS GLENDA	GP	80	3	11	7928	385	4.9	266	3.4	232	223	218	673	COMFORT FARMS LTD, ON

Production Records

LACTATION RECORDS COMPLETED BETWEEN DECEMBER 2021 - NOVEMBER 2022, LISTED BY COMPOSITE BCA

Sr. 3 Yr Old		Class	Yr	Mth	M	F	%F	P	%P	M	F	P	Comp BCA	Owner	
GUCANF11902355	COMFORT FARMS ANASTASIA	GP	81	3	8	7999	334	4.2	270	3.4	241	199	229	669	COMFORT FARMS LTD, ON
GUCANF12793001	BEAVERWOOD LEVI FIONA			3	8	8010	386	4.8	268	3.4	230	219	216	665	BEAVERWOOD FARMS INC., NB
GUCANF12793007	BEAVERWOOD CHARMING FLEUR			3	6	6868	404	5.9	265	3.9	195	228	212	635	BEAVERWOOD FARMS INC., NB
GU840F3143321718	DAIRYMAN NOVAK 3572 LIGHT	GP	80	3	6	7576	364	4.8	260	3.4	217	208	210	635	FERME IMPERIALE SENC., QC
GUCANF12792977	BEAVERWOOD ABBOTT'S ELIZA			3	9	7178	372	5.2	267	3.7	206	213	215	634	BEAVERWOOD FARMS INC., NB
GUCANF12792970	BEAVERWOOD ABBOTT'S EVE			3	10	7212	360	5	267	3.7	203	203	212	618	BEAVERWOOD FARMS INC., NB
GUUSAF97004441	COULEE CREST ALSTAR LEOTIE	G	76	3	7	7517	312	4.2	234	3.1	228	187	200	615	FERME IMPERIALE SENC., QC
GUCANF12792999	BEAVERWOOD PILOT FERN			3	8	6770	332	4.9	255	3.8	195	189	206	590	BEAVERWOOD FARMS INC., NB
4 Yr Old		Class	Yr	Mth	M	F	%F	P	%P	M	F	P	Comp BCA	Owner	
GUCANF12677188	LINDRIAN POLLA LEVI ET	EX	90	4	2	10989	448	4.1	360	3.3	320	255	295	870	JOHN & LINDA TAMIS, BC
GUCANF12276616	BROADVIEW LEVI APPLE	VG	85	4	9	11196	492	4.4	362	3.2	306	269	278	853	SCOTT GORDON, ON
GUCANF12292468	MAPLEHURST PISTOLL RAIN	EX	91	4	5	11165	486	4.3	365	3.3	303	264	279	846	MARLEY FARMS INC, ON
GUCANF12251489	BEAVERWOOD GOTCHAS DERIKA			4	6	8930	481	5.4	328	3.7	258	275	267	800	BEAVERWOOD FARMS INC., NB
GUCANF12062989	EBY MANOR JAGUAR INSPIRE	VG	85	4	8	8408	471	5.6	320	3.8	248	275	264	787	EBY MANOR LTD, ON
GUCANF12251483	BEAVERWOOD CIMERON'S DIANNE			4	9	8913	426	4.8	326	3.7	262	249	269	780	BEAVERWOOD FARMS INC., NB
GUCANF12063013	EBY MANOR ERNIE SHILOH	GP	83	4	2	9573	487	5.1	306	3.2	268	269	241	778	EBY MANOR LTD, ON
GUCANF12615110	DON HAVEN LATIMER VAVOOM	VG	85	4	0	8925	397	4.5	316	3.5	270	238	268	776	SCOTT GORDON, ON
GUCANF12236404	LINDRIAN POLLY LEVI ET	EX	90	4	3	9211	442	4.8	327	3.5	252	242	252	746	JOHN & LINDA TAMIS, BC
GUCANF12062990	EBY MANOR JAGUAR FAITH	EX	90	4	8	8516	385	4.5	304	3.6	255	228	255	738	EBY MANOR LTD, ON
GUUSAF97004583	K-VALLEY FIERCE BOOTIE			4	4	9185	430	4.7	325	3.5	249	234	248	731	EBY MANOR LTD, ON
GUCANF12062987	EBY MANOR LOGO WATERFALL	VG	86	4	4	9741	424	4.3	303	3.1	265	232	231	728	EBY MANOR LTD, ON
GUCANF11902350	COMFORT FARMS PRELUDE	VG	85	4	2	9099	369	4.1	303	3.3	265	210	248	723	COMFORT FARMS LTD, ON
GU840F3141224596	JENS GOLD COPPER BREEZY CHERIS	G	77	4	3	9200	430	4.7	302	3.3	251	234	231	716	FERME IMPERIALE SENC., QC
GUCANF12792962	BEAVERWOOD ABBOTT'S ELSA			4	7	7832	401	5.1	283	3.6	234	235	238	707	BEAVERWOOD FARMS INC., NB
5 Yr Old		Class	Yr	Mth	M	F	%F	P	%P	M	F	P	Comp BCA	Owner	
GUCANF12062980	EBY MANOR LOGO SYLVIA	GP	82	5	1	11893	540	4.5	378	3.2	337	305	300	942	EBY MANOR LTD, ON
GUUSAF78005499	ROZELYN DANIEL TWIST	GP	80	5	5	10492	466	4.4	377	3.6	275	244	277	796	GORDON AND ANGELA FERGUSON, BC
GUCANF12062959	EBY MANOR ACHIEVE ISABELLA	G	79	5	5	9915	476	4.8	370	3.7	260	252	272	784	EBY MANOR LTD, ON
GUCANF12251463	BEAVERWOOD GOTCHA'S CHERI			5	10	8601	485	5.6	299	3.5	239	266	234	739	BEAVERWOOD FARMS INC., NB
GUCANF12292464	MAPLEHURST PILOT TREAT	EX	93	5	3	8877	478	5.4	307	3.5	240	256	233	729	LONDON DAIRY FARMS, ON
GUCANF12292455	MAPLEHURST PILOT SEABISC	EX	90	5	4	8775	385	4.4	297	3.4	259	225	245	729	JOCELYN FORSTER, ON
GUCANF12236406	LINDRIAN POLLIE LEVI ET	VG	87	5	1	9474	421	4.4	343	3.6	251	222	254	727	JOHN & LINDA TAMIS, BC
GUCANF12062983	EBY MANOR LEO WILLOW	VG	87	5	8	8351	416	5	292	3.5	230	229	226	685	EBY MANOR LTD, ON
GUCANF12062979	EBY MANOR JETHRO BEATRICE	VG	87	5	1	8632	342	4	288	3.3	241	190	225	656	EBY MANOR LTD, ON
GUCANF12292456	MAPLEHURST TOBY PANDORA	VG	87	5	9	8627	366	4.2	287	3.3	224	193	210	627	KEN D FORSTER, ON
GUCANF12082859	SLEEPY HOLLOW ROSIE	GP	82	5	2	8190	339	4.1	268	3.3	228	187	209	624	BRETT ALDERS, ON
GUUSAF78006997	ROZELYN NORBERT TRIxie	VG	85	5	1	7495	386	5.2	290	3.9	200	206	216	622	GORDON AND ANGELA FERGUSON, BC
GUCANF11902324	COMFORT FARMS LUMEN	EX	90	5	8	7285	324	4.5	256	3.5	212	186	210	608	COMFORT FARMS LTD, ON
GUCANF12251472	BEAVERWOOD PILOT'S DESIREE			5	2	6779	361	5.3	260	3.8	192	204	206	602	BEAVERWOOD FARMS INC., NB
GUCANF12251465	BEAVERWOOD BILLBOARD'S CHRISTI			5	1	7630	343	4.5	267	3.5	202	182	198	582	BEAVERWOOD FARMS INC., NB
GUCANF12470405	GUERNSEY VIEW WII'S CANDY	VG	85	5	6	6481	337	5.2	229	3.5	190	197	189	576	WANAMAKER BROTHERS, NB

Production Records

LACTATION RECORDS COMPLETED BETWEEN DECEMBER 2021 - NOVEMBER 2022, LISTED BY COMPOSITE BCA

Mature Cow		Class	Yr	Mth	M	F	%F	P	%P	M	F	P	Comp BCA	Owner	
GUCANF11553848	EBY MANOR D L INDY	EX	92	7	1	10688	617	5.8	369	3.5	310	361	300	971	EBY MANOR LTD, ON
GUCANF11755670	BEAVERWOOD GARY'S ALYSSA		6	10	10017	482	4.8	344	3.4	286	279	275	840	BEAVERWOOD FARMS INC., NB	
GUCANF11464475	GREENBROOK CANDY BLUE SPRUCE	VG	85	8	1	9389	398	4.2	324	3.5	274	237	266	777	EBY MANOR LTD, ON
GUCANF11632483	LINDRIAN LEGEND PATI	EX	91	6	5	9150	401	4.4	327	3.6	266	233	268	767	JOHN & LINDA TAMIS, BC
GUCANF11255627	BEAVERWOOD PRADA'S DOMINIQUE		8	11	7940	385	4.8	292	3.7	232	231	239	702	BEAVERWOOD FARMS INC., NB	
GUCANF11356251	MAPLEHURST DAWSON NORA	VG	87	6	9	9194	397	4.3	280	3	256	223	219	698	MORRIS & PENNY BARTLETT, ON
GUCANF11902286	COMFORT FARMS AZELIA	GP	83	6	2	7696	358	4.7	278	3.6	223	206	226	655	COMFORT FARMS LTD, ON
GUCANF11902275	COMFORT FARMS MIA	GP	82	7	3	8424	406	4.8	281	3.3	218	216	205	639	COMFORT FARMS LTD, ON
GUCANF12251438	BEAVERWOOD SHERMAN'S CLARA		6	10	7838	414	5.3	297	3.8	203	217	215	635	BEAVERWOOD FARMS INC., NB	
GUCANF11790176	CEDAR ROCK BIGSHOTTOO DIME	EX	90	7	1	7461	394	5.3	252	3.4	206	218	195	619	WANAMAKER BROTHERS, NB
GUCANF11755675	BEAVERWOOD ALSTAR'S CAITLYN			7	10	6629	367	5.5	254	3.8	193	217	208	618	BEAVERWOOD FARMS INC., NB
GUCANF11356252	MAPLEHURST LEGENDS LACI	VG	87	6	4	8253	341	4.1	283	3.4	213	179	205	597	MARLEY FARMS INC, ON
GUCANF11356253	MAPLEHURST LEGEND CUTIE	EX	90	6	11	7255	316	4.4	279	3.9	201	175	216	592	JOCELYN FORSTER, ON
GUCANF12251435	BEAVERWOOD SHERMAN'S MAKAYLA			6	7	6905	330	4.8	237	3.4	199	190	192	581	BEAVERWOOD FARMS INC., NB
GUCANF11902310	COMFORT FARMS DIAMOND	EX	90	6	2	7329	377	5.1	253	3.5	190	198	185	573	LEWIS LAND AND STOCK, ON

Aged Cow		Class		Yr	Mth	M	F	%F	P	%P	M	F	P	Comp BCA	Owner
GUCANF11120500	EBY MANOR MOREY SPECIAL	EX	90	10	5	8159	372	4.6	282	3.5	217	209	210	636	EBY MANOR LTD, ON
GUCANF9668153	CEDAR ROCK R.D. BABE	GP	83	12	4	4661	201	4.3	163	3.5	140	129	138	407	WANAMAKER BROTHERS, NB

Classification Schedule

DECEMBER

EARLY

ON [MR] Waterloo

ON Oxford

QC Rimouski, Matapedia, Bonaventure, Matane
SK

MID

QC [MR] Vaudreuil, Huntingdon, Iberville,
St-Jean, Chateauguay, Beauharnois, Shefford
BC [MINI MR]

LATE

Happy Holidays!

JANUARY

EARLY

ON [MR] Wellington

QC [MR] Compton, Richmond, Brome,
Missisquoi, Sherbrooke, Stanstead

QC Arthabaska, Wolfe

AB

MID

ON [MR] Northern ON, Thunder Bay, Dundas,
Glengarry, Stormont, Prescott, Carleton
QC Megantic, Lotbiniere

LATE

ON [MR] Niagara, Wentworth, Brant, Haldimand,
Norfolk, Russell

Guernsey Breed Classifications

DECEMBER 01, 2021 TO NOVEMBER 30, 2022 - 80+

Registration Number	Name	Final Class	Final Score	ME	Visit Date
GUCANF12292464	MAPLEHURST PILOT TREAT	EX	93	2E	LONDON DAIRY FARMS, ON
GUCANF11356238	MAPLEHURST MENTOR FELICIA	EX	91	5E	HIDDEN LANE DAIRY INC., ON
GUCANF12292432	MAPLEHURST GEO LADDIE	EX	91	3E	MARLEY FARMS INC, ON
GUCANF11356222	MAPLEHURST PHOENIX BLAZE	EX	90	4E	HIDDEN LANE DAIRY INC., ON
GUCANF11902310	COMFORT FARMS DIAMOND	EX	90	3E	LEWIS LAND AND STOCK, ON
GUCANF11790176	CEDAR ROCK BIGSHOTTOO DIME	EX	90	2E	WANAMAKER BROTHERS, NB
GUCANF12292455	MAPLEHURST PILOT SEABISC	EX	90	2E	JOCELYN FORSTER, ON
GUCANF12292454	MAPLEHURST JAGUAR NATCHO	EX	90	2E	HIDDEN LANE DAIRY INC., ON
GUCANF12236404	LINDRIAN POLLY LEVI	EX	90	2E	JOHN & LINDA TAMIS, BC
GUCANF12292469	MAPLEHURST PILOT SAFFIRE	EX	90	2E	HIDDEN LANE DAIRY INC., ON
GUCANF12292435	MAPLEHURST GOTCHA RITA	EX	90	2E	MARLEY FARMS INC, ON
GUCANF12677196	LINDRIAN PAYA LATIMER	EX	90	1E	JOHN & LINDA TAMIS, BC
GUCANF12677188	LINDRIAN POLLA LEVI	EX	90	1E	JOHN & LINDA TAMIS, BC
GUCANF12062990	EBY MANOR JAGUAR FAITH	EX	90	1E	EBY MANOR LTD, ON
GUCANF12949169	EBY MANOR NOVAK LEMON	EX	90	1E	EBY MANOR LTD, ON
GUCANF12236374	LINDRIAN PILOT DALIE	EX	90	1E	JOHN & LINDA TAMIS, BC
GUCANF12834619	GREYSTONE CASPIAN EXPRESSO	EX	90	1E	FULLER VIEW FARM, J. FULLER, MUSQIE VALLEY FARMS, NS
GUCANF13072232	DON HAVEN LATIMER VI	EX	90	1E	SCOTT GORDON, ON
GUCANF13262827	MAPLEHURST DRONE PEARL	VG2	86		JOCELYN FORSTER, ON
GUCANF13262823	MAPLEHURST DRONE LOGICAL	VG2	85		WESTCOAST HOLSTEINS, BC
GU840F3151591459	SPRINGHILL LS QUICKSILVER	VG2	85		DAVE MCMORROW, ON
GUUSAF97011367	HI RANKIN NOVAK ZIPPY	VG2	85		DAVE MCMORROW, ON
GUCANF110437349	ST YVES ARABIKA	VG2	85		ALAIN & ROGER PREFONTAINE, QC
GUCANF13262818	MAPLEHURST LEGEND RASPBERRY	VG2	85		HIDDEN LANE DAIRY INC., ON
GUCANF13233229	LINDRIAN INDIGO PUTTY	VG2	85		JOHN & LINDA TAMIS, BC
GUCANF13520646	EBY MANOR LEGEND WHISPER	VG2	85		EBY MANOR LTD, ON
GUUSAF97009362	SUNNY MEAD NOVAK GOLDIE	VG2	85		EBY MANOR LTD, ON
GUCANF12936150	COMFORT FARMS AELLA	VG2	85		COMFORT FARMS LTD, ON
GUCANF13262807	MAPLEHURST LIGHTNING KINDER	VG2	85		FERME JAZLYN, QC
GUCANF13262814	MAPLEHURST DRONE DOMINO	VG2	85		JOCELYN FORSTER, ON

GUERNSEY HATS

Now available for purchase



HAT A: AJM 6 PANEL ENZYME WASHED

Super soft 6 Panel Constructed Full-Fit (Mesh Back) Enzyme Washed Deluxe Chino Twill/Soft Nylon Mesh cap.



HAT B: AJM FIVE PANEL BASEBALL CAP

5 Panel Constructed Pro-Round-Five (Mesh Back) baseball cap made from Deluxe Chino Twill / Nylon Mesh. Has Pro-Stitch & a Pre-curved peak.

To purchase, email at guernseyinfo@holstein.ca. We can bill directly to your Holstein Canada Account if desired. Hats are \$20.00 (+ shipping). Please provide address upon request for estimated shipping quote.

**Get your Guernsey Merch
while inventory is still available!**



Guernseys in Quebec

We are jumping out of our skin with excitement about the efforts of the Kaiser family in Quebec to publicize the fact that Guernseys are back, in a big way in Quebec! They took five finest kind golden heifers to the delightful Havelock Fair in Western Quebec this month!

This fair is a true "Country Fair" and has a strong orientation toward diversity in livestock breeds. One of the photos shows some fair executives and leaders with the five heifers and their young leaders. All part of the revival of interest in Guernseys in Quebec and all across Canada.



Photo: Jessie Weir, centre, is joined in the front row by her husband Chris Weir, left, and father Gordon Dunk. Back row, from left, are longtime EastGen/legacy EastGen colleagues Brian O'Connor, Murray Reissner, Lori Wietzke, Dr. Tim Henshaw, and Lowell Lindsay. *Photo by Katrina Joy Photography.*

Selection for Milk Caseins: Beta and Kappa

AUGUST 16, 2022 BY HANNAH SWEETT, PH. D. AND BY BRIAN VAN DOORMAAL



Producers and consumers around the globe have had an increased interest in A2 milk, mainly for its improved digestibility. But did you know there is another milk casein entering the niche market? Kappa Casein is known to play an important role in cheese production. In response to the increase in marketing and selection of favourable milk properties, Lactanet offers Kappa Casein and Beta Casein gene test results.



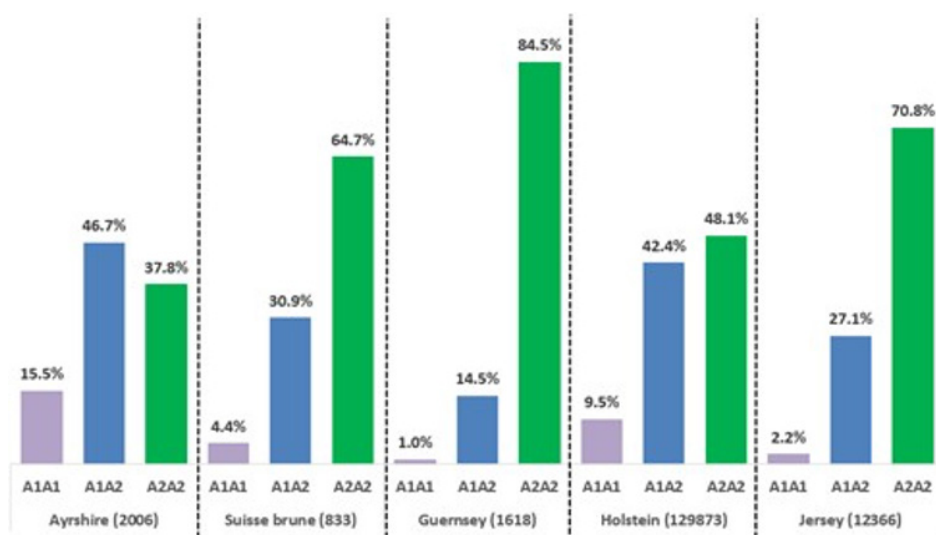
Beta Casein Refresher

Beta Casein is one of four milk proteins, accounting for approximately 30% of all protein in milk. The gene controlling Beta Casein is located on chromosome 6 and is made up of a chain of 224 amino acids. There are two forms of Beta Casein, A1 and A2, with the A2 form related to improved digestibility. The possible Beta Casein genotypes are A2A2, A1A2, or A1A1.

As you may recall, Lactanet released its online A2 (Beta Casein) reports earlier this year to provide its DHI customers a summary of the A2 status of their animals and herd. For more information on how to use the A2 Genotype Reports please see our previous article, [A2 \(Beta Casein\) Reports Now Available!](#)

Figure 1 shows an updated frequency of each A2 genotype by breed estimated using the gene test results currently available, with the count of animals in brackets. Guernsey, Jersey and Brown Swiss breeds have a higher frequency of the A2 gene compared to Holstein and Ayrshire.

Figure 1. Distribution of Beta Casein (A2) Genotypes by Breed (No. Animals)



What is Kappa Casein?

Kappa Casein is another milk protein, which accounts for roughly 13% of all milk proteins. It is also controlled by a gene located on chromosome 6 and comprises a sequence of 162 amino acids. It plays an important role in cheese production, influencing the amount of clotting that occurs and the resulting cheese yield. During cheese production, Kappa Casein is a stabilizing factor that determines how well and how quickly the milk coagulates to form a curd.

Kappa Casein Genotypes

There are nine different forms of Kappa Casein that occur due to mutations, with A, B, and E being the most common. Depending on the transmission of these three forms from an animal's parents, six different Kappa Casein genotypes can result, namely AA, AB, AE, BB, BE, and EE. Each of these genotypes produce different forms of Kappa Casein in the milk, impacting cheese quality.

Selection for Milk Caseins: Beta and Kappa

BY HANNAH SWEETT, PH. D. AND BY BRIAN VAN DOORMAAL

Cows with the BB genotype produce milk with higher levels of fat and protein that clots more quickly and produces the highest cheese yield compared to the other genotypes. Cows with the EE genotype produce milk that does not clot to make cheese and is therefore considered the most undesirable genotype to cheese processors. The following image illustrates the order of Kappa Casein genotypes in terms of their respective cheese-making properties.



Increasing Kappa Casein concentration and favourable

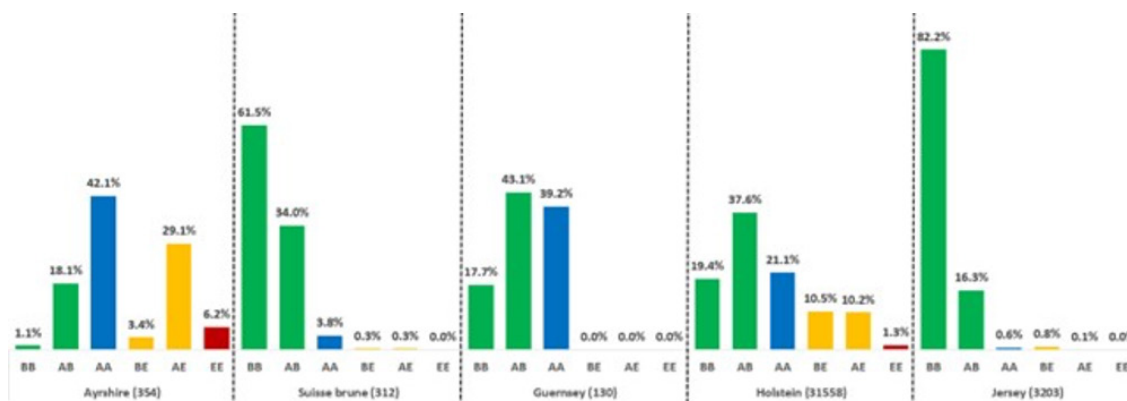
Cheese Production

The Lactanet Genetics database has recently been receiving new and historical Kappa Casein gene test results from A.I. companies, breed associations, and international sources. The prevalence of Kappa Casein genotypes within a breed is dependent on the frequency of the A, B, and E forms in the population.

Figure 2 shows the frequency of Kappa Casein genotypes by breed as estimated using the gene test results currently available, with the count of animals indicated in brackets. The Jersey and Brown Swiss breeds have the highest frequency of the BB genotype at 82.2% and 61.5%, respectively. As a result, the A and E forms are less predominant in these breeds. The frequency of the BB genotype is similar in the Guernsey (43.1%) and Holstein (37.6%) breeds but lower in Ayrshires at 18.1%.

Since the genes controlling Kappa Casein and Beta Casein are both located on chromosome 6, some degree of inheritance relationship may exist and selection for both A2A2 and BB genotypes is possible based on known genotypes.

Figure 2. Distribution of Kappa Casein Genotypes by Breed (No. Animals)



Summary

Producers interested in increasing the frequency of A2 cows in their herd can do so by the preferred use of A2A2 or A1A2 sires. Similarly, for Kappa Casein, selecting for BB or AB sires will gradually increase the frequency of BB cows. These sires can be identified using filtering features of the Advanced Group Query tool on the Lactanet web site. In addition to these tools, to select for Beta Casein, Lactanet customers can use the herd and animal A2 Genotype Reports accessible via your MySite account, which were launched in January 2022.

HAMILTON-MADE CHEESE NAMED *Best in Canada at World Cheese Awards*

NEWS NOV 17, 2022 BY JEREMY KEMENY HAMILTON SPECTATOR



Udder Way Artisan Cheese Co-owner Tor Krueger a big winner at international competition

Evelina and Tor Krueger of Udder Way Artisan Cheese Co. won five awards at the World Cheese Awards, including best cheese in Canada for their oveja negra. Evelina and Tor are seen here with their award-winning cheeses. - Cathie Coward

A Hamilton cheesemaker is utterly thrilled after winning a handful of awards — including Best Canadian Cheese — at the World Cheese Awards.

Tor Krueger, owner of Udder Way Artisan Cheese Co., took home two bronzes, two silvers and a super gold at the event he called “the Michelin awards of the cheese industry.”

Besides the podium placements, his oveja negra cheese was named “world’s best firm sheep milk cheese,” he said, and beat out 73 Canadian entries to win best cheese nationally. Thirty-eight Canadian cheeses won awards. So, what does it take to be the best cheese in Canada? Krueger half-jokingly calls his oveja negra cheese “mancherino”-style — “a cross between manchego and pecorino.”

His sheep milk is sourced from a local farm: Ovino in Acton.

The cheese is made “in the traditional, old European way,” Krueger said. It is vat pasteurized, brined and soaked in extra virgin olive oil.

“We also have these cheese moulds that are quite old and have a unique pattern on them, so the cheese looks interesting as well,” Krueger said.

Oveja negra has to be aged for at least six months to “get the full flavour,” Krueger said. The batch he sent into the competition was seven months old.

The annual World Cheese Awards, hosted by the Guild of Fine Food, were originally scheduled to be held in Ukraine, Krueger said, but were moved to Wales.

Krueger, whose been making cheese at his Hannon creamery since 2016, sent in five of his cheeses to the annual competition.

Pragmatically, he said he thought “maybe we might get a placement, or something.” Instead, all five of his Guernsey cow- and sheep-milk cheeses made the podium.

Contest judges placed the oveja negra entry into the top 98 cheeses — out of 4,434 entries from 42 countries. From there, Krueger said, a group of judges picked the world’s best cheese, which ended up being a Swiss Gruyère.

“But we were part of that last round of judging, which was an honour in itself,” Krueger said.

Jeremy Kemeny is a Hamilton-based web editor at The Spectator. Reach him via email: jkemeny@thespec.com

<https://www.hamiltonnews.com/news-story/10763856-hamilton-made-cheese-named-best-in-canada-at-world-cheese-awards>

LACTANET CANADA														
TOP 10 BROWN SWISS HERDS BY LPI / 10 MEILLEURS TROUPEAUX SUISSE BRUNE SELON L'IPV														
(minimum 20 active cows with official LPI) / (minimum de 20 vaches actives avec un IPV officiel)														
Rank Rang	LPI IPV	No. Cows No. Vaches	%G	Name of Farm / Owner Nom de la Ferme / Propriétaire	City Ville	Province	Milk Lait	Fat Gras	Protein Protéine	Fat % % Gras	Prot % % Prot	SCS CCS	CONF	MS SM
1	1711	77	69	GUBELMANN BROWN SWISS LTD	WALTON	ON	466	29	29	0.09	0.09	103.5	3.9	3.4
2	1531	54	83	FERME HANS ENR.	ACTON-VALE	QC	722	24	23	-0.08	-0.05	102.2	1.1	0.4
3	1473	30	100	SHADY LANE SWISS	SHAWVILLE	QC	363	18	17	0.01	0.02	102.7	4.3	3.6
4	1416	56	48	FERME M.C.F. LECLERC INC.	TROIS-RIVIERES	QC	296	11	13	-0.02	0.02	102.9	4.4	4.3
5	1371	26	38	LES ELEVAGES CELESTAR INC.	ST-CELESTIN	QC	400	14	14	-0.01	0.00	102.4	1.3	1.2
6	1369	28	25	3901912 CANADA INC. FERME LEHMANN	HEBERTVILLE	QC	202	10	10	0.02	0.03	101.9	3.6	3.3
7	1357	28	25	FERME DU CABOURON INC.	ST-ROMAIN	QC	365	15	14	-0.03	0.00	101.7	2.9	2.8
8	1341	72	44	FERME GOULAISE INC. F017	ST-BERNARD-DE-BEAUCE	QC	293	11	12	-0.01	0.00	100.6	2.7	2.6
9	1330	42	2	FOUR OAK FARMS	KLEEFELD	MB	268	6	9	-0.05	0.00	102.4	4.3	4.3
10	1325	21	71	FERME CHARLUSON INC. (BS)	ST-CYPRIEN	QC	143	10	7	0.04	0.01	102.5	3.0	2.8
10	1325	53	9	FERME DOMAINE DE LA RIVIERE INC.	ST-GEDEON	QC	341	12	12	-0.03	-0.02	101.7	0.5	0.6

LACTANET CANADA														
TOP 5 GUERNSEY HERDS BY LPI / 5 MEILLEURS TROUPEAUX GUERNSEY SELON L'IPV														
(minimum 10 active cows with official LPI) / (minimum de 10 vaches actives avec un IPV officiel)														
Rank Rang	LPI IPV	No. Cows No. Vaches		Name of Farm / Owner Nom de la Ferme / Propriétaire	City Ville	Province	Milk Lait	Fat Gras	Protein Protéine	Fat % % Gras	Prot % % Prot	SCS CCS	CONF	MS SM
1	1024	13		LINDRIAN FARMS	SURREY	BC	96	10	3	0.08	0.00	104.4	5.3	5.5
2	981	21		FERME IMPERIALE	NOYAN	QC	15	6	3	0.09	0.04	102.8	3.6	3.7
3	929	17		HIDDEN LANE DAIRY INC.	ELMIRA	ON	-46	6	0	0.12	0.03	101.8	3.6	4.1
4	906	58		EBY MANOR FARM LTD.	WATERLOO	ON	58	4	2	0.03	0.00	100.5	3.6	3.3
5	893	43		COMFORT FARMS	ST ANNS	ON	21	0	1	-0.01	0.01	104.5	2.4	2.3

LACTANET CANADA														
TOP 5 MILKING SHORTHORN HERDS BY LPI / 5 MEILLEURS TROUPEAUX SHORTHORN LAITIER SELON L'IPV														
(minimum 10 active cows with official LPI) / (minimum de 10 vaches actives avec un IPV officiel)														
Rank Rang	LPI IPV	No. Cows No. Vaches		Name of Farm / Owner Nom de la Ferme / Propriétaire	City Ville	Province	Milk Lait	Fat Gras	Protein Protéine	Fat % % Gras	Prot % % Prot	SCS CCS	CONF	MS SM
1	1621	18		OCEANBRAE FARMS, FRED BARRETT	MISCOUCHE	PE	318	9	7	-0.06	-0.03	103.2	5.9	6.5
2	1560	10		ROBDOT FARMS	COBDEN	ON	-6	3	1	0.05	0.02	100.4	7.2	7.9
3	1499	40		RICHFORD FARMS	ST MARYS	ON	115	6	3	0.03	0.00	101.9	4.5	4.2
4	1458	12		KOOPYCREST HOLSTEINS	PICTON	ON	265	10	4	-0.02	-0.05	98.3	4.0	3.8
5	1449	26		LYNMARK	NORWOOD	ON	84	1	2	-0.03	-0.01	100.9	4.3	4.6

LACTANET CANADA														
TOP 5 CANADIENNE HERDS BY LPI / 5 MEILLEURS TROUPEAUX CANADIENNE SELON L'IPV														
(minimum 10 active cows with official LPI) / (minimum de 10 vaches actives avec un IPV officiel)														
Rank Rang	LPI IPV	No. Cows No. Vaches		Name of Farm / Owner Nom de la Ferme / Propriétaire	City Ville	Province	Milk Lait	Fat Gras	Protein Protéine	Fat % % Gras	Prot % % Prot	SCS CCS	CONF	MS SM
1	1937	57		FERME ACTON INC	ACTON-VALE	QC	951	25	21	-0.12	-0.06	102.8	7.8	9.6
2	1362	17		FERME J-P COTE ET FILS INC.	NEUVILLE, CTE PORTENEUF	QC	69	5	3	0.07	0.04	101.1	6.9	5.1
3	1213	13		FERME PATRIMONIALE INC.	ST-AUGUSTIN DALMAS	QC	-9	7	1	0.19	0.02	102.5	0.8	1.1
4	1153	43		FERME BRITANNIA S.E.N.C.	ST-VALERIEN	QC	-142	-5	-4	0.00	-0.01	103.0	5.4	4.9
5	1055	18		LES ELEVAGES CABEROY	ST-PIERRE-BAPTISTE	QC	-286	-4	-5	0.15	0.05	102.0	2.6	2.5

Highlights by Breed - December 2022 -

Please note that Lactanet will not longer be preparing and offering the summary of genetic evaluation highlights by breed. Those articles focussed on changes in ranking for proven sires and cows with an official LPI/Pro\$. In today's world of genomics and more frequent updates of genetic information, the value of these triannual summaries in April, August and December has significantly decreased.

For anyone wishing to discuss this decision and/or obtain the highlights summary for the December 2022 genetic evaluation release, please feel free to reach out via email to:

Brian Van Doormaal
Chief Service Officer
Lactanet Canada
bvandoormaal@lactanet.ca



Guernsey News

2023 SCHEDULE

New for 2023: We are moving towards three issues of Guernsey News and eliminating the Guernsey Journal.

May 2023 Newsletter (submissions due by April 1)
August 2023 Newsletter (submissions due by July 15)
December 2023 Newsletter (submissions due by November 15)

We are always looking for advertisement submissions for our Guernsey News! New discounted rates for advertisement frequency in multiple newsletters.

If you could please provide any advertisements in the below format: Wording for art work specs i.e. design specs – CMYK at 300 ppi in PDF format. We encourage you to submit Camera ready / Completed ads to take advantage of an additional 25% discount.

If you need help putting an advertisement together kindly reach out to Emilie Wallace, and we can look into this on a case by case basis for costs to do ad layout.

SIZE	FREQUENCY 1 Member/Non-Member Rate	FREQUENCY 2 Member/Non-Member Rate (Discount of 15% for 2 ads)	FREQUENCY 3 Member/Non-Member Rate (Discount of 25% for 2 ads)
FULL PAGE 8.5" x 11" <i>with 0.25" bleed</i>	\$240.00 / \$420.00 PER ISSUE	\$200.00 / \$360.00 PER ISSUE	\$180.00 / \$315.00 PER ISSUE
1/2 PAGE 8.5" x 5.5" <i>with 0.25" bleed</i>	\$150.00 / \$240.00 PER ISSUE	\$130.00 / \$200.00 PER ISSUE	\$110.00 / \$180.00 PER ISSUE
1/3 PAGE 8.5" x 3.67" <i>with 0.25" bleed</i>	\$120.00 / \$180.00 PER ISSUE	\$105.00 / \$150.00 PER ISSUE	\$90.00 / \$135.00 PER ISSUE
1/4 PAGE 5.5" x 4.25" <i>with 0.25" bleed</i>	\$100.00 / \$150.00 PER ISSUE	\$85.00 / \$130.00 PER ISSUE	\$75.00 / \$110.00 PER ISSUE

Camera-ready Ads: ADDITIONAL 25% discount