

Canadian
Guernsey



Guernsey Journal

2022 EDITION





Table OF CONTENTS

03	Canadian Guernsey Association Executives Gold Star Breeder Award Master Breeder Award
04 – 05	Board of Directors 2022 New Membership Welcome
06	President's Address
07	Tribute to Jessie Weir and Transitioning with HC
08	Field Representative's Reflections
10	Registrar Report 2022
12 – 13	A Taste of Promise Valley Farms
14 –16	Production Records
17	Superior Production Awards
18	Canadian Guernsey Annual Awards
19	Guernsey Ontario Annual Awards
20	Canadian Class Leaders 2021
22 – 23	Functional Confirmation
24 – 25	Insights From CGA Master Breeder
26	Lactanet Genetic Evaluation Highlights Lactanet Top 5 Guernsey Herds by LPI
27 – 28	Guernsey Breed Classifications Return of the National Show
30	Average Production by Breed Top 10 Cows - All Time Production

Canadian Guernsey Association Executives

CANADIAN GUERNSEY ASSOCIATION BOARD OF DIRECTORS

President:
Jim Eby

Vice President:
Paul Macleod

National Field Representative:
Russel Gammon

Board of Directors:
Christian Kaiser
Morris Bartlett
Alan Spence
Bruce Fuller
Colin Comfort

GUERNSEY CATTLE BREEDERS ASSOCIATION OF ONTARIO

President:
Jocelyn Forster

Vice President:
Scott Gordon

Board of Directors:
Ben Eby
Jim Eby
Colin Comfort
Morris Bartlett

BREED IMPROVEMENT COMMITTEE

Chair:
Scott Gordon
Committee Members:
Jim Eby
Rob Forster
Alan Spence
Christian Kaiser
Eric Leach
Bruce Fuller

ADMINISTRATORS AND REGISTRAR

Herdbook and Genotyping Services Manager:
Linda Markle

Registrar:
Janine Eygenraam

Bilingual Administrative Coordinator:
Nicky Barnard


2020 BREEDER AWARD
EBY MANOR LTD
Waterloo, ON

Congratulations on your achievement!

To achieve this honour, a home-bred herd will have at least 15 completed records, with classification score average at least 82.5% and BCA 10 points above the National Herd Average for Butterfat and Protein.


2019 BREEDER AWARD
KEN D. FORSTER
MAPLEHURST FARM
Lynden, ON

This award is presented to the Breeder that ahas won the Gold Star Breeder Award five out of eight consecutive years.

Canadian Guernsey Board Of Directors &

GUERNSEY CATTLE BREEDERS ASSOCIATION OF ONTARIO



Jim Eby

President, ON (Canadian Association) and Ontario Director

Our farm name is Eby Manor Farms Inc (Our milk retail business is a separate company and is Eby Manor Ltd.) I grew up on the farm and have been involved in the family farm for my entire life. My favorite Guernsey product is Guernsey heifer calves. All Guernsey milk products are pretty special, but Guernsey ice cream is always a real treat.

When I was a boy my parents switched the herd to Guernseys to secure a contract to sell Guernsey milk at a higher price than they were currently being paid. The marketability of Guernsey milk was very evident, and so I developed a passion for marketing Guernsey milk, which became a reality in 2012.

Every breed has its strong points and I appreciate good cows of any breed. What we find to be the most desirable traits of the Guernsey cow is the outstanding quality of her milk and milk products and the docile temperament which she possesses.



Paul MacLeod

Vice-President, ON (Canadian Association)

Our farm name is Darcroft Farms, Twisted Creek is our Guernsey prefix. I have been involved in the Dairy Industry for 60 years.

My favourite Guernsey product is Eby Manor chocolate milk! We are relatively new to the Guernsey Breed and excited to learn more.



Russell Gammon

Field Representative (Canadian Association)

I have been involved in the dairy industry for over 40 years since graduating from NSAC and University of Guelph. Largely on the breed association and genetics side of the industry.

My favourite Guernsey product is Eby Manor chocolate Golden Guernsey milk. That being said, my daily go to milk is Eby Manor white milk and, Flat on My Baco cheese from Udder Way Artisan Cheese is one of my most delightfully memorable cheeses! Both sides of my family had some involvement with the Guernsey breed in Nova Scotia decades ago.

I admire the great attitude of the Guernsey cow, her amazing milk, which is in such high demand, and the passion of Guernsey owners and breeders! The Guernsey breed spells sustainability, efficiency, high quality nutritious products and versatility to fit a variety of management systems!



Morris Bartlett

Canadian and Ontario Director, ON

Our farm name is Running Spring and I have been involved in dairy all my life. We find the Guernsey breed very quiet and docile. They are such easy cows to work with and our family has enjoyed showing them at local fairs. The Guernsey breed is very personable when our kids were of 4H age they both used Guernsey calves in their dairy clubs to their great enjoyment. My favourite product is the Guernsey chocolate milk!



Bruce Fuller

Canadian Director, BC (Canadian Association)

I caught brown cow fever at a young age from my grandfather Frank Saunders Valley View Guernseys. I started going to shows with him when I was 11 years old and I was hooked! I like the docile manner of Guernsey's and the tasty milk and milk products.

I started a herd of Guernseys Minas View Farm and dairy farmed for some years. I then took a hiatus and became a sailing boat captain for eight years...now I'm back in the Guernsey business ... back home investing in Guernsey's!

I'm making some great partnerships and am grateful to be involved with the breed, organization and the wonderful Guernsey breeders; they're more like family than anything.



Christian Kaiser

Canadian Director, QC

Our farm name is Ferme Impériale senc and I have been involved in the dairy industry since 2001 after graduating from Kemptville College. I Joined the family farm in 2001 and was a local committee member for PLQ and currently chairman of local UPA committee. In 2017 we purchased Laiterie Chagnon to diversify into processing. We purchased our first Guernsey cows in March of 2019 to make specialty products at the milk plant.

My favourite Guernsey product is the cows themselves! The Guernsey breed has lots of potential but is not well known and the low numbers come with some challenges.

I love their gentle character and their feed efficiency. They also have the best cheese yields. I want to be part of bringing this breed to the next level.



Alan Spence

Canadian Director, ON (Canadian Association)

Our farm name is RednGold and I have been involved in the dairy industry my entire life. My favourite Guernsey product is their quality Milk. I am dedicated to the Guernsey breed because of the connection with my family.

My grandfather started adding Guernseys to his dairy herd in the 1950's because of their feed efficiency, lactation persistency and high milk components. These qualities are still valid today and is something I admire about the breed.



Jocelyn Forster

President, ON (Ontario Association) and Canadian Director

Our farm name is Maplehurst Farms. I have been involved in the dairy industry all my life, from carrying baby bottles at the age of 4 to growing to reach the pipeline at age 10 to milk the cows.

My favourite Guernsey product is Gelato! I'm dedicated to the Guernsey breed with how docile and well-mannered they are. I have grown to love the Guernseys more and more with the great future that is ahead of them.

Guernsey's are in high demand, as many farmers are wanting to add more worth into their herd whether it be for dairy strength or milk components. The Guernsey breed has been a part of Forster family for 92 years. The cows may be sold, but I will always have the love for my Golden Guernsey's.



Scott Gordon

Vice-President, ON (Ontario Association)

Our family has been farming just outside of Guelph since 1938. I have been involved in the farm all my life and am the 3rd generation to own the farm.

We bought our first Guernsey in 1989 when the Ontario milk board brought in multiple component pricing and started to register them under the Don Haven prefix.

The Guernseys high components and the breeders themselves drew my father to the breed and our fondness for the breed has only grown. It is exciting to see the renewed energy surrounding the breed from processors and farmers and I am honoured to be a small part of the team leading the Guernsey breed into the future. Please join me in a glass of chocolate milk to celebrate our golden girls!



Colin Comfort

Canadian and Ontario Director, Ontario - Past President, ON

Our farm name is Comfort Farms Ltd. I've been involved in the family farm for my entire life and my family's involvement goes back a few generations.

My favourite Guernsey product would have to be Guernsey ice cream. Our family likes the Guernsey breed because they are a calm sound cow and the milk has more benefits to it.

I have been president for the last few years of the Ontario Association and look forward to continuing to help better the breed.



Ben Eby

Ontario Director, ON

Eby Manor Farms is our family farms name. I grew up on this farm and have been involved throughout the years. I hoof trimmed for about 20 years and have been pretty much full time here on the farm for the last 10 years.

My favourite Guernsey product is our cows. But any given day it's a toss-up between ice cream & our chocolate milk. I'm dedicated to the Guernsey breed because I believe in it. We've seen hundreds of people's lives positively affected by the Guernsey products.

There's also a sentimental value to the breed in that Guernsey's saved my Grandpa's farm through the Golden Guernsey milk program, at Maple Lane. Besides that, growing up and working with them every day, is living the dream!

Welcome New Membership for 2022! (Jan-Apr)

Greg & Coral Hessels
HESGEN, Mission, BC

Sunnycroft Farms Ltd
Janette McDonald
SUNNYCROFT, Milford, NS

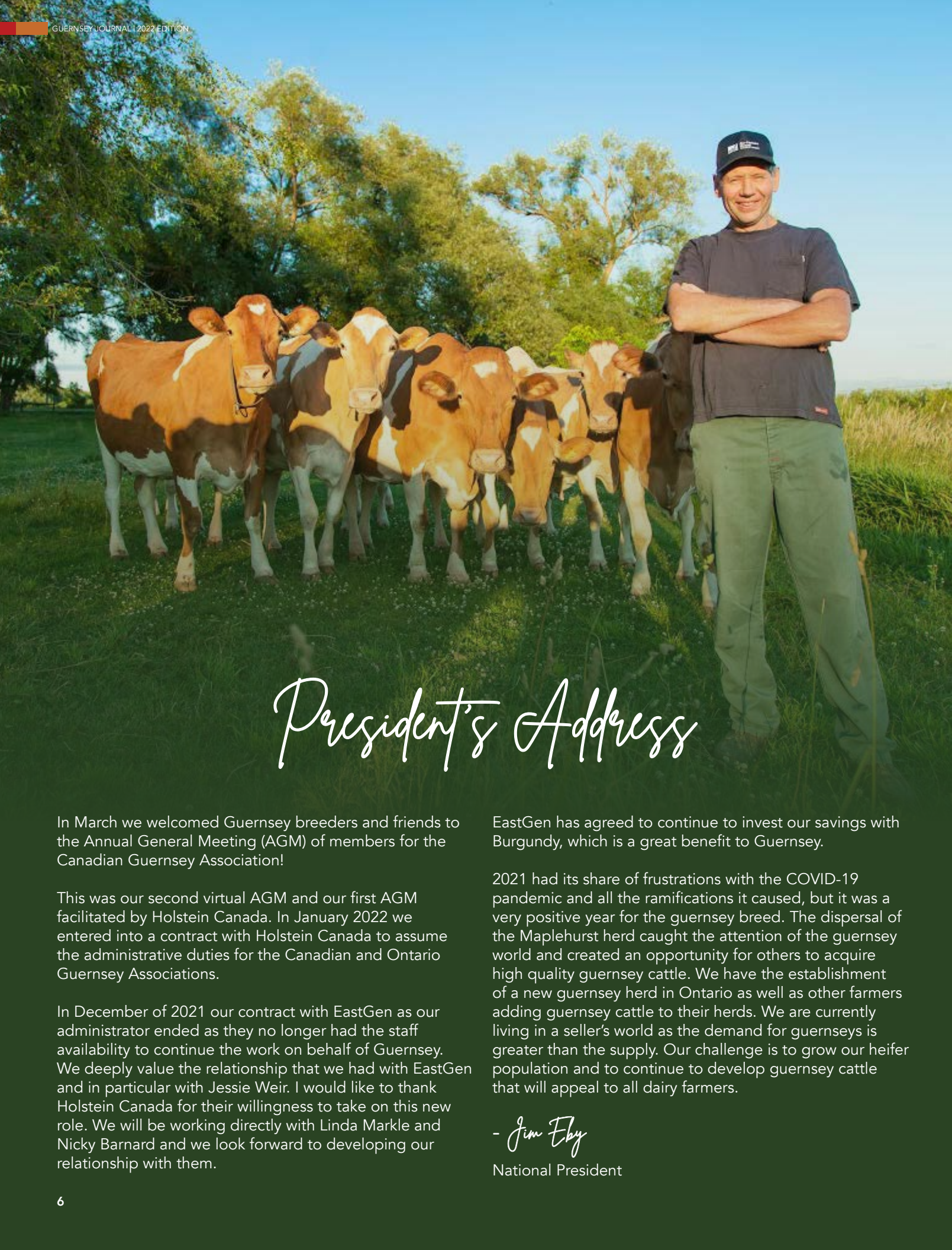
Hidden Lane Dairy Inc.
Kyle Horst
Elmira, ON

Benjamin Eby
Waterloo, ON

Alain & Roger Prefontaine
ST-YVES, St. Aime, QC

Ferme R T R Jalbert Inc
RETHERO, St. Maurice, QC

Ferme Madrice
Jean-Luc Lapointe
MADRICE, St. Germain, QC



President's Address

In March we welcomed Guernsey breeders and friends to the Annual General Meeting (AGM) of members for the Canadian Guernsey Association!

This was our second virtual AGM and our first AGM facilitated by Holstein Canada. In January 2022 we entered into a contract with Holstein Canada to assume the administrative duties for the Canadian and Ontario Guernsey Associations.

In December of 2021 our contract with EastGen as our administrator ended as they no longer had the staff availability to continue the work on behalf of Guernsey. We deeply value the relationship that we had with EastGen and in particular with Jessie Weir. I would like to thank Holstein Canada for their willingness to take on this new role. We will be working directly with Linda Markle and Nicky Barnard and we look forward to developing our relationship with them.

EastGen has agreed to continue to invest our savings with Burgundy, which is a great benefit to Guernsey.

2021 had its share of frustrations with the COVID-19 pandemic and all the ramifications it caused, but it was a very positive year for the guernsey breed. The dispersal of the Maplehurst herd caught the attention of the guernsey world and created an opportunity for others to acquire high quality guernsey cattle. We have the establishment of a new guernsey herd in Ontario as well as other farmers adding guernsey cattle to their herds. We are currently living in a seller's world as the demand for guernseys is greater than the supply. Our challenge is to grow our heifer population and to continue to develop guernsey cattle that will appeal to all dairy farmers.

- Jim Eby

National President

A million or more thank yous to Jessie Weir!

For more than a decade Jessie Weir served as the highly capable Administrator for Canadian Guernsey Association. Jessie is a long-term employee with Eastgen, based near Guelph, Ontario. Eastgen provided administration services to CGA. Guernsey was blessed that such a hard-working, capable, organized, pleasant and dedicated person as Jessie worked with our breed.

Jessie took a strong interest in members of the association and always completed work promptly and with excellence as her credo. As she became very familiar with CGA processes she was not afraid to challenge established ways of doing things with creative new ideas for the CGA Board to consider!

With some internal staffing changes at Eastgen and a key position becoming available Jessie assumed a new role at the beginning of 2022.

A decision was made that Eastgen would no longer provide admin services to Guernsey.

Thankfully an agreement was reached with the capable team at Holstein Canada and Jessie was terrifically helpful in ensuring a smooth transition to the new business relationship with Holstein.

Jessie's professionalism and positive helpful attitude and leadership reaped big rewards for Guernsey. The purpose of this article is to say a huge thank you to Jessie for terrific service to CGA.

We are sure Jessie will continue to be successful in her newer role at Eastgen!



TRANSITIONING WITH HOLSTEIN CANADA

Hello from Holstein Canada! Thank you for the opportunity to provide Administrative Services to the Guernsey Association. As we embark on the journey of transitioning duties from Eastgen there are a few projects we hope to help tackle for the Association.

Some projects on the go are; updating your Association's brand with new colour, improved templates, media files, reports and working with your field man on your social presence.

In 2022 our goal is to make some updates to your website. Please feel free to reach out to us with any ideas or information you wish to see implemented on the website.

We look forward to working closely with such a dedicated group of producers and enthusiasts.



Hello my name is Nicky Barnard and I am looking forward to working the Guernsey Board of Directors as your Administrator Coordinator.

Field Representative's Reflections

CHANGING TIMES, PASSION FOR GUERNSEYS GROWS

Where, oh where is 2022 going?

The calendar is changing months in a blur. Thankfully interest in Guernsey's in this country is growing just as fast as the year is flying by!

The spectacular Maplehurst sale in November 2021 proved beyond a shadow of a doubt that Canadians are keen on working with Guernseys and that interest in the Canadian Guernsey product in the USA is intense! So many people expressed an interest in the sale, some went home with animals, some learned lots and continued searching.

During our online AGM in March some valuable updating was done to the by-laws of CGA. Improving clarity and modernization of processes were the two key goals of the process. Abundant thanks are extended to Janine Eygenraam, who leads on processing of Guernsey registry work at Holstein Canada, for her leadership on explaining concepts and wording options. Janine worked wonderfully with the committee who were tasked with reviewing the by-laws and nominating amendments.

There is so much to look forward to this year....The Association is now engaged in launching our 2022 National Guernsey Breeders Cup contest.

We're also looking forward to a live and in person meeting of our Genetic Improvement Committee with a member of the Holstein Canada Classification staff to review classification of Guernseys in Canada.

Our National Show, which has been such a success at Ancaster Fair, is back this year! As one of the very first events on the program at Ancaster Fair the show will start at 4 pm on Thursday, September 22nd with Brent Howe of Aylmer, Ontario serving as Judge. How great it will be to have the first live show at Ancaster since September of 2019!!!!

Semex has been enthusiastically building their offering of Guernsey bulls. Very recently Coulee Crest Carver 200GU00126 was released. Carver is a high ranking young genomic sire in the USA and also ranks 4th on the GLPI list in Canada. He offers some variation in pedigree in that he is a son of Marodore Randalls Vengeance and is from a



dam sired by Lang Haven Judgment Net Worth.

We continue to receive a steady flow of requests for availability of single Guernseys and occasionally larger numbers.

Canadians continue to invest in cattle from the USA with a southwestern Ontario dairy farmer converting his herd to Guernseys. The vast majority have been sourced from groups of cattle that have been imported from the USA or by buying directly in auction sales or via private treaty sales south of the border. This happening marks the second time in less than a year that a whole herd conversion has taken place. These new herds will help supply processors who are hungry for Guernsey milk!

Our constant challenge remains making more top quality Guernseys and putting sellers and buyers together!

These are some of the very good things happening with the Guernsey breed in Canada!

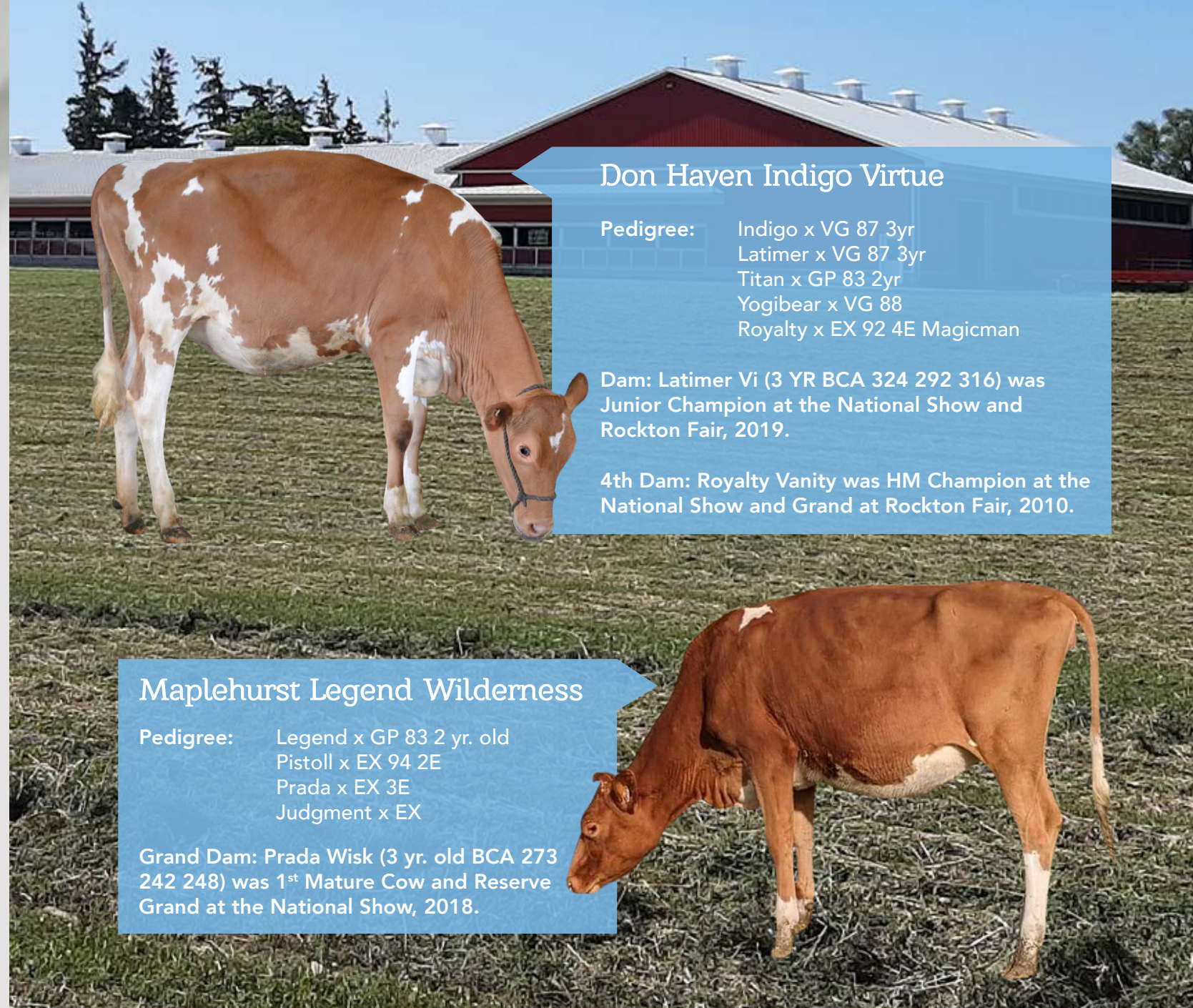
Enjoy more good news by studying the article on Promise Valley Farm and Creamery on Vancouver Island in this issue of the Journal!

And share your Good Golden Guernsey news with us so we can keep spreading the news!

- Russell Gammon

National Field Representative for CGA

Bydand Farms Exciting Prospects for 2022



Don Haven Indigo Virtue

Pedigree: Indigo x VG 87 3yr
Latimer x VG 87 3yr
Titan x GP 83 2yr
Yogibear x VG 88
Royalty x EX 92 4E Magicman

Dam: Latimer Vi (3 YR BCA 324 292 316) was Junior Champion at the National Show and Rockton Fair, 2019.

4th Dam: Royalty Vanity was HM Champion at the National Show and Grand at Rockton Fair, 2010.

Maplehurst Legend Wilderness

Pedigree: Legend x GP 83 2 yr. old
Pistoll x EX 94 2E
Prada x EX 3E
Judgment x EX

Grand Dam: Prada Wisk (3 yr. old BCA 273 242 248) was 1st Mature Cow and Reserve Grand at the National Show, 2018.

Scott & Katrina Gordon
Hanna & Kayla
(519) 994-6910

BYDAND FARM
Bydand Holsteins & Don Haven Guernseys and Ayrshires
5436 Wellington Rd. 29, Rockwood, ON N0B 2K0
bydandfarm@gmail.com

John & Nancy
(519) 766-6781

Registrar Report 2022

Hello Guernsey breeders,

The year is off to a good start. Congratulations on a very successful AGM in March! I had eye surgery in early March and unfortunately was off for almost a month, but it was nice to be able to listen in and get caught up on the things that I don't hear about regularly at the office.

At the AGM, a number of by-law changes were approved. We will be sending the final copy with the by-law changes and grammar updates read to the Animal Pedigree Act for approval. I would like to thank the committee and the board for their hard work on this and the membership for their support of these updates. It is great to see the motivation in the Guernsey membership to keep things modern and updated even if it means going through the by-laws—which is probably one of the lesser-favored tasks!

Lactation Number	Number of Classifications	Final Score	Rump	Mammary	Feet and Legs	Dairy Strength
1	39	80	82	80	81	82
2	16	83	84	83	84	84
3	9	87	86	89	86	88
4	4	89	90	89	88	91
5	3	90	88	91	92	91
All	71	83	83	83	83	84

Since January of this year, we also have seven new members in four provinces. I would like to extend a welcome to those members and wish you much success in your endeavors with the Guernsey breed. In a small breed, that's a lot of new members good considering we are only 1/3 of the way through the year. Let's see if we can get the same number in the next 2/3 of the year.

As many of you know, I am also working part-time at a farm (not Guernseys unfortunately, but about 85% of our herd is A2A2). Throughout the summer, I will be in the office two days per week. You can reach me at **855-756-8300 ext. 283** or jeygenraam@holstein.ca. If you end up calling on

a day that I am not in the office, you can either leave me a message and I will call back as soon as I'm in next. Or if you need something a little more urgently, you can talk to **Chris Grice** as well **ext. 257**.

Looking forward to seeing how much we can grow the Guernsey breed this year!
Have a great summer!



- Janine Eygenraam
Registrar

This year to-date, we have registered 126 animals including a number of embryo calves and even calves from pooled embryos. I know that you as Guernsey breeders take much pride in the genetics of your herd and it is apparent in the registrations that are coming through as well as the classifications.

The chart below gives some statistics for your classification to-date. Please note that all averages have been rounded to the nearest whole number. One thing I would like to highlight is that the average score for each of the categories when you include all lactations is 83. That means the average of the population scored since January is 83. Keep up the good work!



We are pleased that Mar-Ley Farms are now contributing to our supply of A2 Golden Guernsey Milk. Marlin and Shirley Martin are the owners of the newly established Guernsey herd and have acquired a very impressive group of cattle from various farms, including Maplehurst.

Mar-Ley is also supplying milk for UdderWay Cheese Company. Comfort farms also provide milk for our Guernsey cheese production as well as supplying Upper Canada Cheese with Guernsey milk.



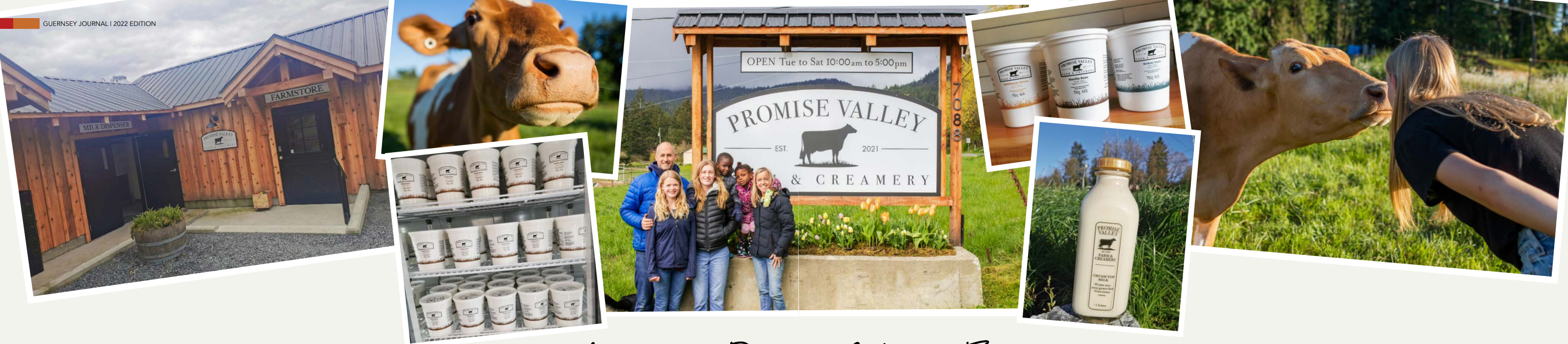
Eby Manor DL Indy EX92
2021 Class Leader in Butterfat and Protein
Mature cow 10688-617-5.8%-389-3.5%
BCA-310 M-361 F-300 P
(Dam of "Indigo")

Eby Manor Jaguar Faith Ex 90
2021 Class Leader in Butterfat and Protein
3year old 11998-556-4.6%-398-3.3%
BCA-375M-341 F-349 P

VISIT US TODAY AT
1174 Weeby Pl. RR#1
Waterloo ON
N2J 4G8

info@ebymanor.ca
Jim & Ruth Eby: 519-664-2560
Ben & Sheri Eby: 519-664-2560

www.ebymanor.ca



A taste of Promise Valley Farms

Q | Can you tell us a little bit about yourselves and your background with agriculture and who your key team members are? How long have you owned your farm and where is it located?

Both Mark and I were not raised on dairy farms. The passion for dairy grew as Mark worked on other local dairies on Vancouver Island. I myself was raised on a hobby farm and then worked overseas in agriculture before marrying my high school sweetheart, Mark!

It was then that an opportunity arose to purchase an empty local dairy here in the Cowichan Valley and on April 1st, 2006, we became proud owners of what is now Promise Valley Farm! That November we purchased a small amount of quota and started off on our own!! 12 Holstein cows. Over the next 8 years we grew to 38 cows but as time went on and cost went up it and the fact we were not on any type of quota program, it was just simply not adding up. We sold our cows and quota and took a much-needed break. We changed direction and diversified on our farm.

We grew veggies, meat chickens, eggs, pork and beef. As time went on we realized how much we loved dairy farming and that that was our true passion! It was then we came up with the idea of dairy farming again but doing it differently. A friend dropped by and had given us a tub of Guernsey yogurt from Washington, USA. It was incredible. we changed our game plan. Different breed, process our own products, transition to organic and A2A2. We haven't looked back. We currently have one employee that works with Mark and myself.

Q | What stimulated you to work with the Guernsey breed? How long have you owned Guernseys? What is

the current herd size? What do you like about the breed?

We first tasted the products of Guernsey cattle before even seeing a Guernsey cow itself! It was once we tasted what they produce we then pursued the breed. We LOVED what we saw. Smaller cattle, quiet, beautiful animals! We have imported heifers from Washington in 2019 and then again in May 2020. Our herd size is 34 and we currently milk 10 with hopes of growing as the business grows.

Q | What sparked your interest in processing your own milk on-farm?

The reason we looked into on farm processing is two-fold... we wanted the general public to connect with their food and what better way than coming to the farm and meeting the farmer and purchasing fresh milk! The other reason we choose to process is the fact that Vancouver Island does not have an organic processing plant, so in order to go organic we ourselves had to process!

Q | What products are you producing from Guernsey milk?

We currently produce cream top yogurt, cream top milk, feta cheese and cheese curds. We also make soap with the beautiful, creamy high carotene milk!

Q | Can you describe your facilities and new store and the range of products you sell? Anything unusual or unique about your operation? Thinking about the milk dispenser which is not overly common in Canada....as an example.

I believe what is unique about our situation is the fact that not only are we the only Guernsey herd on the island, but

we are the first Organic, A2A2 dairy as well! We will be certified organic by this summer. We have a small BCCDC approved processing plant with a farm store and milk dispenser (2nd on the island) right outside of the plant. Our carbon footprint to get the milk and other products to the consumer is very minimal.

Q | What has been consumer/customer reaction to the Guernsey milk products you sell? What have you learned from working with Guernsey milk?

We have had amazing and very encouraging feedback from the public about our Guernsey products!! Many who have not been able to consume dairy products in years due to digestive issues can enjoy the creamy A2 Guernsey milk and yogurt with no problems! Everyone seems to be so intrigued by the golden colour as well.

Q | What are your herd goals for improvement and growth? What genetic tools are you using? Which sires have you been using?

We really enjoy the genetic side of things with our guernsey cattle and hope to improve quality and genetics over time. We had our first Excellent milk cow last year and we hope to have more coming! We have been using JC Penny, Indigo, Pilot, Design, and Kandyman.

Q | What are your main social media platforms? What reactions are you seeing from your social media efforts?

Our social media platforms have been Facebook and Instagram. We are seeing the best results for advertising through these platforms! Our road sign has also brought in traffic to our farm store.

Q | If you feel comfortable saying so what are your plans for next steps for Promise Valley Dairy/Farm?

Our next steps for Promise Valley Farm is to be a part of others starting small scale, organic dairies here on Vancouver Island! We have no desire to become bigger or more commercial at all. Instead, we have a passion to see smaller farms getting started!

We at Promise Valley Farm can produce yogurt, milk and soft cheeses but we hope others can take on some other amazing products that this incredible breed can provide...like hard cheeses, ice cream and butter!! There is opportunity on the island for this and a keen desire for it! We hope we can be a resource for someone and help others in some way.

Q | Our understanding is that 2022 has been a huge year for you, re: obtaining the license to process milk, opening the store and now an open house? Did you want to comment on this seeming rush of activity and how long have you been planning all of this action?

Yes, this year has been insane! Starting a business, getting licensed, promoting ourselves (marketing is not an easy thing!) We have been planning this for quite some time. I would say at least 3 years. The grand opening is really aimed at getting the public to know who we are and to meet our beautiful Guernseys!

Production Records

LACTATION RECORDS COMPLETED BETWEEN DECEMBER 2021 AND APRIL 2022, LISTED BY COMPOSITE BCA

		%	Class	Yr	Mth	M	F	%F	P	%P	M	F	P	Comp BCA	Owner	
Yearlings																
GUCANF12949202	EBY MANOR LEGEND FERGIE	PB	GP	81	1	11	9708	392	4	289	3	329	268	275	872	EBY MANOR LTD, ON
GUCANF12949208	EBY MANOR BEAU EMERALD	PB	GP	82	1	11	8035	387	4.8	262	3.3	277	269	254	800	EBY MANOR LTD, ON
GUCANF13233177	LINDRIAN LUCKY JAGUAR	75	VG	85	1	9	7784	364	4.7	258	3.3	276	260	258	794	JOHN & LINDA TAMIS, BC
GUCANF12949218	EBY MANOR LIGHTNING SHIMMER	PB	G	79	1	11	7464	351	4.7	241	3.2	273	256	248	777	EBY MANOR LTD, ON
GUCANF12949191	EBY MANOR LEGEND WISH	PB	GP	83	1	11	7044	328	4.7	258	3.7	250	233	258	741	EBY MANOR LTD, ON
GUCANF12949214	EBY MANOR BEAU LUCILLE	PB	VG	85	1	11	6820	350	5.1	242	3.5	240	246	240	726	EBY MANOR LTD, ON
GUUSAF97007375	COULEE CREST LADYSMAN JODI	PB	GP	82	1	10	7097	351	5	242	3.4	243	242	233	718	FERME IMPERIALE SENC., QC
GU840F3200732116	DAIRYMAN CHARMING 4196 PEAS	PB			1	11	7510	328	4.4	238	3.2	254	225	227	706	FERME IMPERIALE SENC., QC
GUCANF13233182	LINDRIAN JAGUAR PET	PB	GP	82	1	11	6034	296	4.9	211	3.5	217	211	213	641	JOHN & LINDA TAMIS, BC
GUCANF111375777	DAIRYMAN RANDALL 5777	PB	G	75	1	9	5799	260	4.5	189	3.3	219	197	201	617	FERME IMPERIALE SENC., QC
GUCANF12936115	COMFORT FARMS ELLYANNE	PB	GP	82	1	11	5436	274	5	182	3.4	186	189	175	550	COMFORT FARMS LTD, ON
GUCANF12936130	COMFORT FARMS MEGORA	PB	GP	82	1	9	5141	253	4.9	171	3.3	186	185	174	545	COMFORT FARMS LTD, ON
GUCANF12936125	COMFORT FARMS ELLORA	PB	GP	82	1	10	4396	182	4.1	139	3.2	155	130	138	423	COMFORT FARMS LTD, ON
GUCANF13520619	EBY MANOR PILOT TAYLOR	PB	GP	81	1	11	3609	176	4.9	131	3.6	133	129	136	398	EBY MANOR LTD, ON
		%	Class	Yr	Mth	M	F	%F	P	%P	M	F	P	Comp BCA	Owner	
Jr. 2 Yr Old																
GUCANF12949188	EBY MANOR LIGHTNING JACLYN	75	GP	83	2	5	8825	424	4.8	326	3.7	284	274	296	854	EBY MANOR LTD, ON
GUCANF12949201	EBY MANOR LIGHTNING WILMA	PB	GP	81	2	1	8594	388	4.5	290	3.4	291	264	276	831	EBY MANOR LTD, ON
GUCANF13159219	GREYSTONE NOVAK FELICITY	PB	VG	85	2	4	8765	422	4.8	290	3.3	280	271	261	812	FULLER VIEW FARM, J. FULLER, MUSQIE VALLEY FA, NS
GUCANF13404283	DON HAVEN LADY VAVA	PB	GP	80	2	0	7284	378	5.2	252	3.5	265	276	257	798	SCOTT GORDON, ON
GUCANF13048090	MAPLEHURST PISTOLL ZOE	PB	GP	82	2	0	8267	373	4.5	271	3.3	280	254	258	792	NATIONAL MUSEUM OF SCIENCE & TECHNOLOGY CORP., ON
GUCANF12949198	EBY MANOR LADYS MAN LYDIA	PB	GP	80	2	0	8094	319	3.9	253	3.1	275	218	241	734	EBY MANOR LTD, ON
GUCANF12949197	EBY MANOR LADYS MAN LILAC	PB	GP	80	2	1	7717	312	4	245	3.2	259	211	231	701	EBY MANOR LTD, ON
GUCANF12949203	EBY MANOR BEAU SWEETIE	PB	GP	82	2	0	6944	321	4.6	241	3.5	238	221	232	691	EBY MANOR LTD, ON
GUCANF12949207	EBY MANOR BEAU KENDRA	PB	VG	85	2	1	6442	330	5.1	247	3.8	221	224	237	682	EBY MANOR LTD, ON
GUCANF12949204	EBY MANOR LADYS MAN DELIGHT	PB	GP	82	2	2	6825	287	4.2	231	3.4	236	197	224	657	EBY MANOR LTD, ON
GUCANF12936110	COMFORT FARMS MINA	PB	GP	81	2	3	7025	309	4.4	227	3.2	227	201	206	634	COMFORT FARMS LTD, ON
GUCANF13408842	FULLER VIEW LEGEND GINA	PB	GP	81	2	0	5830	267	4.6	208	3.6	207	188	208	603	THE FULLER VIEW FARM, NS
GUCANF12949192	EBY MANOR JUDGEMENT WREN	PB	GP	84	2	2	5615	300	5.3	201	3.6	183	197	184	564	EBY MANOR LTD, ON
GUCANF13253876	BEAVERWOOD LEGENDS FIRECRACKER	87			2	4	5416	278	5.1	213	3.9	179	183	197	559	BEAVERWOOD FARMS INC., NB
GUCANF12936117	COMFORT FARMS COUNTESS	PB	GP	81	2	2	5988	236	3.9	198	3.3	200	158	185	543	COMFORT FARMS LTD, ON
		%	Class	Yr	Mth	M	F	%F	P	%P	M	F	P	Comp BCA	Owner	

Sr. 2 Yr Old

GUCANF12949173	EBY MANOR LIGHTNING DENISE	93	GP	81	2	6	8148	376	4.6	273	3.4	268	246	253	767	EBY MANOR LTD, ON
GUCANF12949172	EBY MANOR NOVAK WINDSOR	PB	GP	80	2	11	8501	401	4.7	282	3.3	258	243	241	742	EBY MANOR LTD, ON
GUCANF12793005	BEAVERWOOD RANDALL FAYE	87			2	10	7414	329	4.4	277	3.7	226	201	237	664	BEAVERWOOD FARMS INC., NB
GUCANF12936106	COMFORT FARMS LUA	PB	GP	82	2	6	7971	303	3.8	251	3.1	249	189	220	658	COMFORT FARMS LTD, ON
GUCANF13253864	BEAVERWOOD KAKADU FIRE	PB			2	6	6683	323	4.8	250	3.7	213	207	223	643	BEAVERWOOD FARMS INC., NB
GUCANF12793014	BEAVERWOOD LCS FOXY	87			2	6	6383	285	4.5	222	3.5	200	178	195	573	BEAVERWOOD FARMS INC., NB
GUCANF12936100	COMFORT FARMS AURORA	PB	GP	84	2	11	5807	257	4.4	198	3.4	176	156	169	501	COMFORT FARMS LTD, ON
GUCANF12792998	BEAVERWOOD LADYS MAN FRANNY	PB			2	10	4670	233	5	179	3.8	141	140	152	433	BEAVERWOOD FARMS INC., NB

Production Records

LACTATION RECORDS COMPLETED BETWEEN DECEMBER 2021 AND APRIL 2022, LISTED BY COMPOSITE BCA

		%	Class	Yr	Mth	M	F	%F	P	%P	M	F	P	Comp BCA	Owner	
Jr. 3 Yr Old																
GUUSAF97002914	COULEE CREST NAVAJO LARINAH	PB			3	2	10266	435	4.2	313	3	318	265	272	855	FERME IMPERIALE SENC., QC
GU840F3132543261	OAK KNOB TOBY WRINKLE	PB	G	78	3	0	8461	486	5.7	323	3.8	259	295	276	830	FERME IMPERIALE SENC., QC
GUCANF12677224	LINDRIAN ERNIE POPPET	PB	VG	85	3	0	9398	418	4.5	306	3.3	287	253	262	802	JOHN & LINDA TAMIS, BC
GUCANF12949175	EBY MANOR ERNIE IDAHO	PB	GP	80	3	2	8740	415	4.8	279	3.2	274	258	245	777	EBY MANOR LTD, ON
GUCANF12949165	EBY MANOR JULIUS PEACH	PB	VG	85	3	3	8619	416	4.8	293	3.4	257	246	246	749	EBY MANOR LTD, ON
GUUSAF97006541	WARWICK MANOR LS PRETTY ET	PB	GP	81	3	0	6307	310	4.9	231	3.7	207	201	214	622	JOCELYN FORSTER, ON
GUCANF12792994	BEAVERWOOD CORDELL'S ELGA	PB			3	0	6699	318	4.8	222	3.3	199	188	185	572	BEAVERWOOD FARMS INC., NB
		%	Class	Yr	Mth	M	F	%F	P	%P	M	F	P	Comp BCA	Owner	
Sr. 3 Yr Old																
GUCANF12251490	BEAVERWOOD GOTCHAS DESSY	PB			3	7	7758	384	5	277	3.6	241	236	241	718	BEAVERWOOD FARMS INC., NB
GUCANF11902349	COMFORT FARMS GLENDA	PB	GP	80	3	11	7928	385	4.9	266	3.4	232	223	218	673	COMFORT FARMS LTD, ON
GU840F3143321718	DAIRYMAN NOVAK 3572 LIGHT	PB	GP	80	3	6	7576	364	4.8	260	3.4	217	208	210	635	FERME IMPERIALE SENC., QC
GUCANF12792977	BEAVERWOOD ABBOTT'S ELIZA	PB			3	9	7178	372	5.2	267	3.7	206	213	215	634	BEAVERWOOD FARMS INC., NB
GUCANF12792970	BEAVERWOOD ABBOTT'S EVE	PB			3	10	7212	360	5	267	3.7	203	203	212	618	BEAVERWOOD FARMS INC., NB
GUCANF12792988	BEAVERWOOD ABBOTT'S ELANA	PB			3	8	6152	307	5	255	4.1	183	181	213	577	BEAVERWOOD FARMS INC., NB
GUCANF12792979	BEAVERWOOD KAKADU'S EMILIA	PB			3	10	6050	311	5.1	227	3.8	178	181	187	546	BEAVERWOOD FARMS INC., NB
GUCANF12834601	GUERNSEY VIEW ZURIS ERICA	PB	GP	83	3	10	6330	259	4.1	214	3.4	181	147	173	501	THE FULLER VIEW FARM, NS
GU840F3143321681	GR-DAIRYMAN COPPER 3535 CATCHY	87	GP	84	3	11	6075	238	3.9	194	3.2	185	143	166	494	FERME IMPERIALE SENC., QC
		%	Class	Yr	Mth	M	F	%F	P	%P	M	F	P	Comp BCA	Owner	
4 Yr Old																
GUCANF12236404	LINDRIAN POLLY LEVI ET	PB	EX	90	4	3	9211	442	4.8	327	3.5	252	242	252	746	JOHN & LINDA TAMIS, BC
GUCANF12062987	EBY MANOR LOGO WATERFALL	PB	VG	86	4	4	9741	424	4.3	303	3.1	265	232	231	728	EBY MANOR LTD, ON
GUCANF11902328	COMFORT FARMS HERMINE	PB	GP	81	4	8	9153	375	4.1	282	3.1	245	202	212	659	COMFORT FARMS LTD, ON
GUCANF12292469	MAPLEHURST PILOT SAFFIRE	PB	EX	90	4	2	7295	360	4.9	273	3.7	200	196	210	606	MARLEY FARMS INC, ON
GUCANF12062991	EBY MANOR JETHRO JULIETTE	PB	VG	85	4	4	6599	368	5.6	249	3.8	184	204	195	583	EBY MANOR LTD, ON
GUUSAF97003729	ROCKY HILL GAMBLE HAZEL	PB	GP	81	4	0	7020	320	4.6	234	3.3	194	177	181	552	FERME IMPERIALE SENC., QC
GUCANF12251479	BEAVERWOOD CRUNCH'S DORCAS	PB			4	1	5370	287	5.3	224	4.2	165	173	193	531	BEAVERWOOD FARMS INC., NB
GUCANF11902332	COMFORT FARMS SWEET HEART	PB	VG	86	4	4	5851	326	5.6	210	3.6	159	175	160	494	COMFORT FARMS LTD, ON
GUCANF11902338	COMFORT FARMS MELANIA	PB	VG	86	4	8	5329	242	4.5	186	3.5	153	138	150	441	COMFORT FARMS LTD, ON
GUCANF11902346	COMFORT FARMS APERIO	PB	GP	81	4	6	4587	230	5	174	3.8	138	137	148	423	COMFORT FARMS LTD, ON
		%	Class	Yr	Mth	M	F	%F	P	%P	M	F	P	Comp BCA	Owner	

5 Yr Old

GUUSAF78005499	ROZELYN DANIEL TWIST	PB	GP	80	5	5	10492	466	4.4	377	3.6	275	244	277	796	GORDON AND ANGELA FERGUSON, BC
GUCANF12062959	EBY MANOR ACHIEVE ISABELLA	PB	G	79	5	5	9915	476	4.8	370	3.7	260	252	272	784	EBY MANOR LTD, ON
GUCANF12062979	EBY MANOR JETHRO BEATRICE	PB	VG	87	5	1	8632	342	4	288	3.3	241	190	225	656	EBY MANOR LTD, ON
GUUSAF78006997	ROZELYN NORBERT TRIxie	PB	VG	85	5	1	7495	386	5.2	290	3.9	200	206	216	622	GORDON AND ANGELA FERGUSON, BC
GUCANF12251465	BEAVERWOOD BILLBOARD'S CHRISTI	PB			5	1	7630	343	4.5	267	3.5	202	182	198	582	BEAVERWOOD FARMS INC., NB
GUCANF12244739	WARRINDALE CASPIAN TINA	PB	GP	82	5	5	7516	336	4.5	250	3.3	197	176	184	557	WARRINDALE FARMS,

Production Records

LACTATION RECORDS COMPLETED BETWEEN DECEMBER 2021 AND APRIL 2022, LISTED BY COMPOSITE BCA

		%	Class	Yr	Mth	M	F	%F	P	%P	M	F	P	Comp BCA	Owner
Mature Cow															
GUCANF11553848	EBY MANOR D L INDY	PB	EX	92	7	1	10688	617	5.8	369	3.5	310	361	300	971 EBY MANOR LTD, ON
GUCANF11755670	BEAVERWOOD GARY'S ALYSSA	75			6	10	10017	482	4.8	344	3.4	286	279	275	840 BEAVERWOOD FARMS INC., NB
GUCANF11902286	COMFORT FARMS AZELIA	PB	GP	83	6	2	7696	358	4.7	278	3.6	223	206	226	655 COMFORT FARMS LTD, ON
GUCANF11902275	COMFORT FARMS MIA	PB	GP	82	7	3	8424	406	4.8	281	3.3	218	216	205	639 COMFORT FARMS LTD, ON
GUCANF11790176	CEDAR ROCK BIGSHOTTOO DIME	PB	EX	90	7	1	7461	394	5.3	252	3.4	206	218	195	619 WANAMAKER BROTHERS, NB
GUCANF11902300	COMFORT FARMS SENECA	PB	GP	84	6	4	5305	243	4.6	190	3.6	148	137	148	433 COMFORT FARMS LTD, ON
GUCANF10996438	COMFORT FARMS LULA	PB	VG	85	7	10	5078	262	5.2	173	3.4	135	141	129	405 COMFORT FARMS LTD, ON
		%	Class	Yr	Mth	M	F	%F	P	%P	M	F	P	Comp BCA	Owner
Aged Cow															
GUCANF11120500	EBY MANOR MOREY SPECIAL	PB	EX	90	10	5	8159	372	4.6	282	3.5	217	209	210	636 EBY MANOR LTD, ON



Comfort Farms

As we proceed into the uncertainty of 2022, **LUMEN** is one of our stars we can depend on:

COMFORT FARMS LUMEN, EX.

- Sired by Pilot with an LPI of 861
Grand Champion of the 2019 Went-Niagara Club show
- 5-year-old record of 6,946, 319, 265 kgs, 212 M, 189 F, 211 P
- 4 Lactation average is 206 M, 185 F, 201 P
- Due in September to Toby Keith.
- Has a 2-year-old Randall daughter, C. F. Lucerne GP 82 with an LPI of 999, 202-day projection: 224 M, 193 F, 209 P.
- Has an August 2021 heifer, **Comfort Farms Copper Lumina** with an LPI of 991
- Congratulations to the Foster family for successful dispersal in fall 2021

Superior Production Awards

BASED ON 2021 PRODUCTION RECORDS

BUTTERFAT +475 KG

LINDRIAN POLLA LEVI ET (EX-90)
3 Yr 10950 498 4.5% 352 3.2%
BCA 360M 323F 326P
JOHN & LINDA TAMIS, SURREY, BC

EBY MANOR ERNIE JANA (VG-87)
3 Yr 10022 500 5.0% 326 3.2%
BCA 310M 303F 283P
EBY MANOR LTD, WATERLOO, ON

BEAVERWOOD ERNIE'S ELYSE
3 Yr 9182 500 5.5% 331 3.6%
BCA 263M 286F 267P
BEAVERWOOD FARMS INC., DUNDAS, NB

LINDRIAN POLLIE LEVI ET (VG-87)
4 Yr 11070 553 5.0% 399 3.6%
BCA 312M 307F 317P
JOHN & LINDA TAMIS, SURREY, BC

OAK KNOB COTTER ZAP (VG-86)
4 Yr 10583 498 4.7% 338 3.2%
BCA 286M 268F 256P
FERME IMPERIALE SENC., NOYAN, QC

LINDRIAN PILOT DALIE (EX-90)
4 Yr 9063 516 5.7% 333 3.7%
BCA 241M 273F 249P
JOHN & LINDA TAMIS, SURREY, BC

BEAVERWOOD SHERMAN'S CLARA
5 Yr 9581 518 5.4% 344 3.6%
BCA 249M 273F 251P
BEAVERWOOD FARMS INC., DUNDAS, NB

EBY MANOR D L INDY (EX-92)
7 Yr 10688 617 5.8% 369 3.5%
BCA 310M 361F 300P
EBY MANOR LTD, WATERLOO, ON

LAND OF LIVING A DEWDROP ET
3 Yr 8508 480 5.6% 298 3.5%
BCA 265M 295F 261P
EBY MANOR LTD, WATERLOO, ON

EBY MANOR JAGUAR INSPIRE (VG-85)
3 Yr 9340 557 6.0% 333 3.6%
BCA 273M 326F 273P
EBY MANOR LTD, WATERLOO, ON

EBY MANOR JAGUAR FAITH (EX-90)
3 Yr 11998 556 4.6% 398 3.3%
BCA 375M 341F 349P
EBY MANOR LTD, WATERLOO, ON

EBY MANOR LOGO SYLVIA (GP-82)
4 Yr 13020 578 4.4% 419 3.2%
BCA 383M 336F 346P
EBY MANOR LTD, WATERLOO, ON

EBY MANOR CASPIAN FAIRE (VG-85)
4 Yr 10665 541 5.1% 373 3.5%
BCA 318M 316F 311P
EBY MANOR LTD, WATERLOO, ON

EBY MANOR SHERBERT INDIA (GP-80)
5 Yr 7914 479 6.0% 320 4.0%
BCA 207M 252F 235P
EBY MANOR LTD, WATERLOO, ON

MAPLEHURST MENTOR FELICIA (EX-91)
6 Yr 7203 571 7.9% 268 3.7%
BCA 186M 301F 194P

PROTEIN +370 KG

EBY MANOR JAGUAR FAITH (EX-90)
3 Yr 11998 556 4.6% 398 3.3%
BCA 375M 341F 349P
EBY MANOR LTD, WATERLOO, ON

LINDRIAN POLLIE LEVI ET (VG-87)
4 Yr 11070 553 5.0% 399 3.6%
BCA 312M 307F 317P
JOHN & LINDA TAMIS, SURREY, BC

EBY MANOR LOGO SYLVIA (GP-82)
4 Yr 13020 578 4.4% 419 3.2%
BCA 383M 336F 346P
EBY MANOR LTD, WATERLOO, ON

EBY MANOR CASPIAN FAIRE (VG-85)
4 Yr 10665 541 5.1% 373 3.5%
BCA 318M 316F 311P
EBY MANOR LTD, WATERLOO, ON

ROZELYN DANIEL TWIST (GP-80)
5 Yr 10492 466 4.4% 377 3.6%
BCA 275M 244F 277P
GORDON AND ANGELA FERGUSON, ENDERBY, BC

GREENBROOK CANDY BLUE SPRUCE (VG-85)
6 Yr 10763 458 4.3% 377 3.5%
BCA 293M 252F 288P
EBY MANOR LTD, WATERLOO, ON

CANADIAN GUERNSEY ASSOCIATION

Annual Awards

MARSHDENE FARM AWARD

To the Highest Lifetime Butterfat Producer
completing a record in 2021
EBY MANOR D L INDY (EX)
3736 kg in 5 lactations
Eby Manor Ltd, Waterloo, ON

CALLUMLEA FARM AWARD

To the Highest Lifetime Protein Producer
completing a record in 2021
EBY LAWN NEON FLIPPER (VG)
2663 kg in 8 lactations
Eby Manor Ltd., Waterloo, ON

GARTMORE FARMS AWARD

For the Highest Increase in Fat + Protein BCA
over the previous year (2019 – 2020)
SCOTT GORDON, ON
2019 BCA 442 – 2020 BCA 480 – Increase 38

LINDRIAN FARMS AWARD

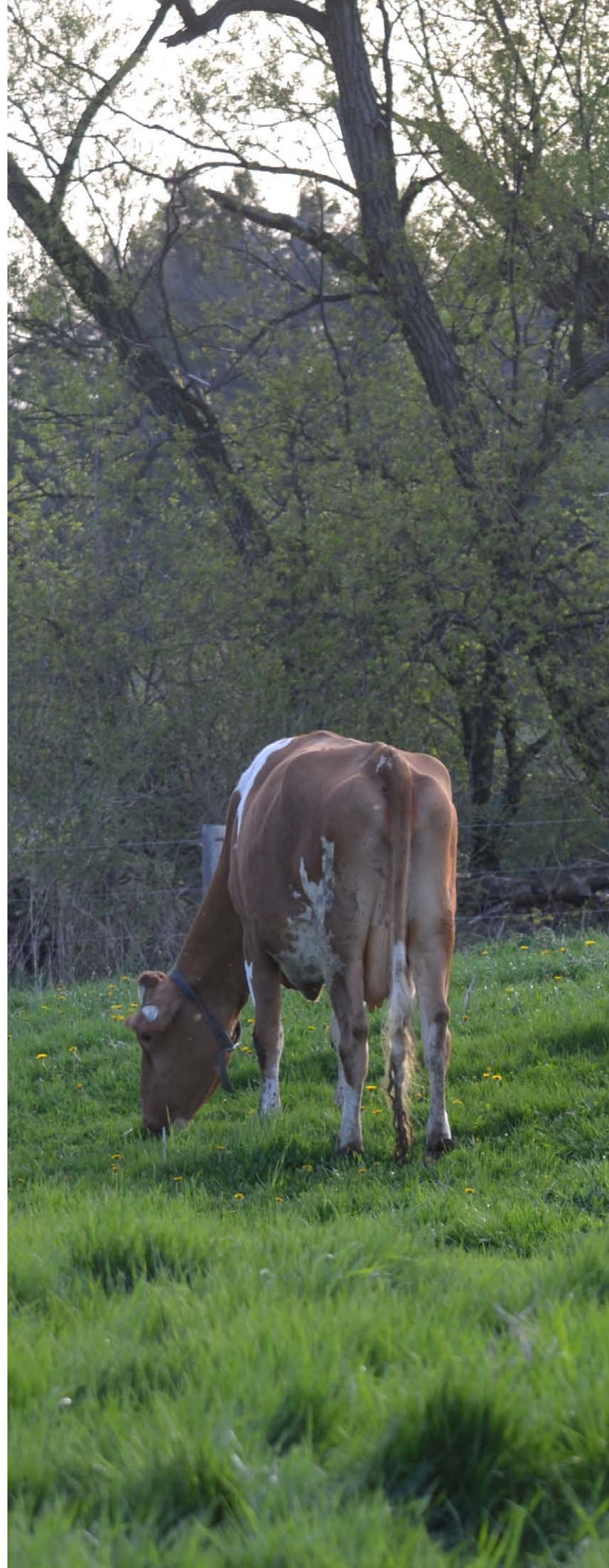
For the Highest Butterfat Herd Average (kg) 2020
EBY MANOR LTD, ON
58 records 8148 398 282 BCA 250M 245F 243P

CHINOOK CREST DAIRY AWARD

For the Highest Protein Herd Average (kg) 2020
LINDRIAN FARMS, BC
15 records 7970 369 285 BCA 261M 241F 263P

LINDLEY FARM AWARD

For the Highest Fat + Protein Breed Class Average 2020
LINDRIAN FARMS, BC
BCA 241F 263P = Fat + Protein BCA Total 504



GUERNSEY CATTLE BREEDERS'
ASSOCIATION OF ONTARIO

Annual Awards

ONTARIO GUERNSEY ASSOCIATION
AWARDED TO THE BREEDER AND
OWNER OF THE GRAND CHAMPION
COW AT 2021 ONTARIO SHOWS
BASED ON LIFETIME RECORDS

NOT AWARDED IN 2021

ONTARIO GUERNSEY ASSOCIATION
AWARD FOR HIGHEST BUTTERFAT
PRODUCTION (KG)

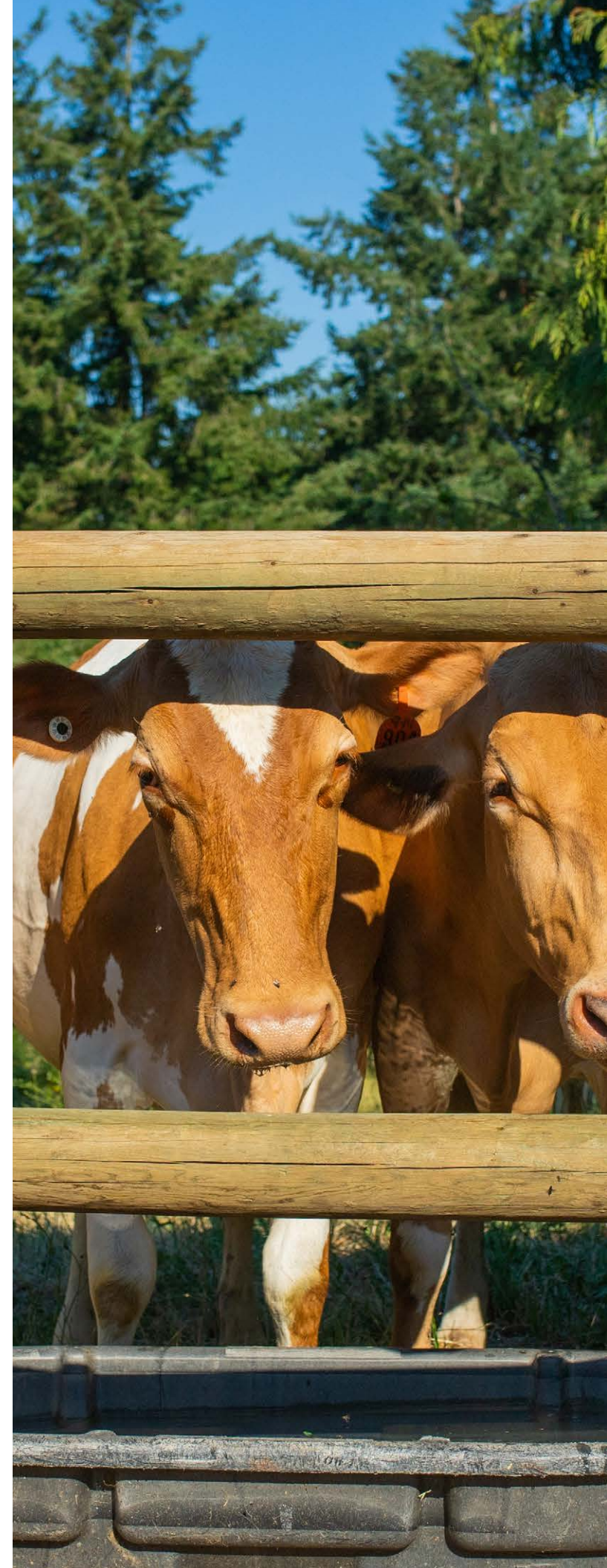
EBY MANOR D LINDY (EX-92)
7-1 10688M 617F 5.8% 369P 3.5% BCA
310M 361F 300P
Eby Manor Ltd, Waterloo, ON

ONTARIO GUERNSEY ASSOCIATION
AWARD FOR HIGHEST PROTEIN
PRODUCTION (KG)

EBY MANOR LOGO SYLVIA (GP-82)
4-1 13020M 578F 4.4% 419P 3.2% BCA
383M 336F 346P
Eby Manor Ltd., Waterloo, ON

ONTARIO GUERNSEY ASSOCIATION
AWARD FOR THE COW WITH THE
HIGHEST BCA FAT + PROTEIN

EBY MANOR JAGUAR FAITH (EX-90)
3-9 11998M 556F 4.6% 398P 3.3% BCA
375M 341F 349P
Total Fat + Protein BCA: 690
Eby Manor Ltd., Waterloo, ON



2021 Honour Roll

BASED ON 2021 PRODUCTION RECORDS

ADDITIONS BUTTERFAT

Yearlings ~ 9
EBY MANOR ERNIE LEMONAID
8910 416 4.7% 290 3.2%
EBY MANOR LTD, WATERLOO, ON

Sr. 2 Yr Old ~ 2
DON HAVEN KAKADU VELMA
9704 466 4.8% 331 3.4%
SCOTT GORDON, ROCKWOOD, ON

Sr. 2 Yr Old ~ 3
EBY MANOR JULIUS IRIS
8431 465 5.5% 318 3.8%
EBY MANOR LTD, WATERLOO, ON

Jr. 3 Yr Old ~ 8
EBY MANOR JAGUAR INSPIRE
9340 557 6.0% 333 3.6%
EBY MANOR LTD, WATERLOO, ON

Sr. 3 Yr Old ~ 4
BEAVERWOOD ERNIE'S ELYSE
9182 500 5.5% 331 3.6%
BEAVERWOOD FARMS INC., DUNDAS, NB

Sr. 3 Yr Old ~ 2
EBY MANOR JAGUAR FAITH
11998 556 4.6% 398 3.3%
EBY MANOR LTD, WATERLOO, ON

4 Yr Old ~ 4
EBY MANOR LOGO SYLVIA
13020 578 4.4% 419 3.2%
EBY MANOR LTD, WATERLOO, ON

Mature Cow ~ 4
MAPLEHURST MENTOR FELICIA
7203 571 7.9% 268 3.7%
KEN D FORSTER, LYNDEN, ON

Mature Cow ~ 2
EBY MANOR D L INDY
10688 617 5.8% 369 3.5%
EBY MANOR LTD, WATERLOO, ON

Aged Cow ~ 4
EBY LAWN NEON FLIPPER
10303 451 4.4% 332 3.2%
EBY MANOR LTD, WATERLOO, ON

Aged Cow ~ 8
MATT-AMIA TROMBONE BONNIE-SUE
9890 423 4.3% 334 3.4%
CARDINAL CREEK HOLSTEINS, PORT ELGIN, ON

ADDITIONS PROTEIN

Yearlings ~4
LINDRIAN PROSPER LADYSMAN
8644 397 4.6% 311 3.6%
JOHN & LINDA TAMIS, SURREY, BC

Sr. 3 Yr Old ~2
EBY MANOR JAGUAR FAITH
11998 556 4.6% 398 3.3%
EBY MANOR LTD, WATERLOO, ON

4 Yr Old ~9
LINDRIAN POLLIE LEVI ET
11070 553 5.0% 399 3.6%
JOHN & LINDA TAMIS, SURREY, BC

4 Yr Old ~4
EBY MANOR LOGO SYLVIA
13020 578 4.4% 419 3.2%
EBY MANOR LTD, WATERLOO, ON

Mature Cow ~10
GREENBROOK CANDY BLUE SPRUCE
10763 458 4.3% 377 3.5%
EBY MANOR LTD, WATERLOO, ON

Aged Cow ~6
EBY LAWN NEON FLIPPER
10303 451 4.4% 332 3.2%
EBY MANOR LTD, WATERLOO, ON

Aged Cow ~4
MATT-AMIA TROMBONE BONNIE-SUE
9890 423 4.3% 334 3.4%
CARDINAL CREEK HOLSTEINS, PORT ELGIN, ON

Canadian Class Leaders 2021

BASED ON BREED CLASS AVERAGE | JANUARY ~ DECEMBER 2021 RECORDS

BUTTERFAT

Yearlings
EBY MANOR ERNIE LEMONAID (VG-86)
8910 416 290 BCA: 314M 293F 287P
EBY MANOR LTD, WATERLOO, ON

2 Yr Old
EBY MANOR ERNIE RAELYNN (VG-85)
9330 422 313 BCA: 334M 299F 316P
EBY MANOR LTD, WATERLOO, ON

3 Yr Old
EBY MANOR JAGUAR FAITH (EX-90)
11998 556 398 BCA: 375M 341F 349P
EBY MANOR LTD, WATERLOO, ON

4 Yr Old
EBY MANOR LOGO SYLVIA (GP-82)
13020 578 419 BCA: 383M 336F 346P
EBY MANOR LTD, WATERLOO, ON

5 Yr Old
BEAVERWOOD SHERMAN'S CLARA
9581 518 344 BCA: 249M 273F 251P
BEAVERWOOD FARMS INC., DUNDAS, NB

Mature Cow
EBY MANOR D L INDY (EX-92)
10688 617 369 BCA: 310M 361F 300P
EBY MANOR LTD, WATERLOO, ON

Aged Cow
MATT-AMIA TROMBONE BONNIE-SUE (EX-90)
9890 423 334 BCA: 298M 275F 283P
CARDINAL CREEK HOLSTEINS, PORT ELGIN, ON

PROTEIN

Yearlings
LINDRIAN PROSPER LADYSMAN (G-77)
8644 397 311 BCA: 305M 284F 308P
JOHN & LINDA TAMIS, SURREY, BC

2 Yr Old
EBY MANOR ERNIE RAELYNN (VG-85)
9330 422 313 BCA: 334M 299F 316P
EBY MANOR LTD, WATERLOO, ON

3 Yr Old
EBY MANOR JAGUAR FAITH (EX-90)
11998 556 398 BCA: 375M 341F 349P
EBY MANOR LTD, WATERLOO, ON

4 Yr Old
EBY MANOR LOGO SYLVIA (GP-82)
13020 578 419 BCA: 383M 336F 346P
EBY MANOR LTD, WATERLOO, ON

5 Yr Old
MAPLEHURST LEGEND CUTIE (EX-90)
9431 439 354 BCA: 276M 255F 290P
JOCELYN FORSTER, LYNDEN, ON

Mature Cow
EBY MANOR D L INDY (EX-92)
10688 617 369 BCA: 310M 361F 300P
EBY MANOR LTD, WATERLOO, ON

Aged Cow
MATT-AMIA TROMBONE BONNIE-SUE (EX-90)
9890 423 334 BCA: 298M 275F 283P
CARDINAL CREEK HOLSTEINS, PORT ELGIN, ON



Functional Conformation

WHAT DOES IT TAKE TO BUILD A LONG-LASTING COW?

Written by: Murilo Carvalho, Education & Extension All Breeds Classification

Longevity in your herd has long been a goal for producers; in the most practical terms, the longer a cow lasts the more profit she has generated. To qualify this statement, however, we must add the adjective 'productive' in front, particularly now with the large amount of information we have on any cow and the faster genetic gain. In the past, the selection was heavily based solely on production and conformation, mostly because functional traits were hard to measure and select. The production part was easier to quantify – the cow that produced the largest volume of milk was the best one. However, conformation brings some subjectivity to what is ideal, and largely, the ideal concept of conformation has seen large changes over the years. Combining that with ideal health and fertility traits we can begin to see the profit of productive longevity.

Looking at the conformation evolution of a few cows considered among the best in Canada at their time, it is clear the breeds have been looking for more functional cows – cows of adequate width and openness, with a sound mammary system and easily mobile on her feet and legs. This is a consequence of several factors that drive the industry decisions, mostly related to efficiency gains and consumer perception. While our producers continue to look for more profitable animals, the breeds' committees continuously work to assure the industry needs are incorporated into the conformation evaluation – which also reflects into the bull proofs and national indices.

It is not only about the final score

It is not uncommon to hear about cows that had a subpar score as young cows, but ended up producing very well for a long period – and these stories do stand out. However, this is not the rule. Obviously, a good final score doesn't necessarily translate into long-lasting and highly productive cows, but the females with an above average and balanced conformation through the parts are the ones with higher odds of lasting longer. And the positive consequence of a balanced conformation through the parts relates to an above average final score. Still, it is important to highlight that a strong breakdown across the board is an essential piece of the puzzle – so just selecting for health traits (and completely ignoring conformation) is not enough to guarantee profitability.

Where conformation and longevity tie-up

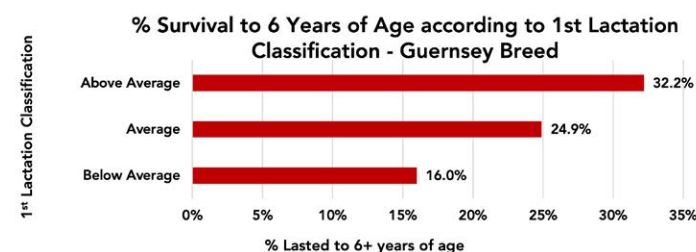
One can argue that type is not anymore, the main breeding focus of a large selection of herds across the

Country. Agreed. However, optimal conformation is a focus because every producer needs a herd that is founded in a very solid conformation base to sustain producing large amounts of milk for a long period of time in the current highly intense production systems. For that reason, every genetic selection index includes conformation traits in it, directly or indirectly. Completely ignoring conformation traits would mean a drastic reduction in productive longevity. Meanwhile, the classification system looks into incorporating the industry needs in a way the tool can aid in improving longevity.

In Canada, the Durability component within the LPI formula is mostly affected by conformation traits, besides that of Herd Life and Hoof Health. In the end, no matter the breed, about 20% of the LPI value is affected by Mammary System and Feet and Legs. Similarly, Pro\$ is also affected by conformation traits, although in this case, it is an indirect weight – which means the conformation values are not weighted into the formula but play a role indirectly.

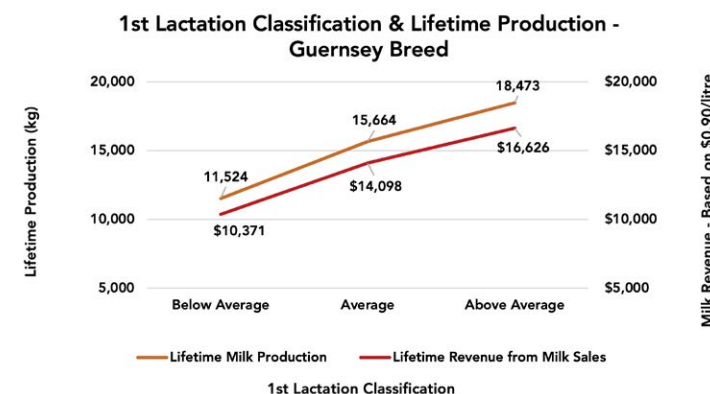
The traits most related to longevity

To find out how functional conformation was related to longevity, we tried to envision them on the farm level. For that, we looked at the first lactation first classification of over 400 Guernsey females born between 2011 and 2013 in Canada, and how long they lasted – over or under 6 years of age, which is considerably higher than the national average. Interestingly, almost 1/3 of the females that had an above average conformation in their first lactation lasted to 6 years of age, over 7 percentage points above the group of females that was evaluated with average conformation



One could argue that just the fact that the better conformation cows are lasting longer does not mean they were actually more productive, or more profitable over their lifetime. For that reason, we looked into the lifetime production, and the revenue generated by

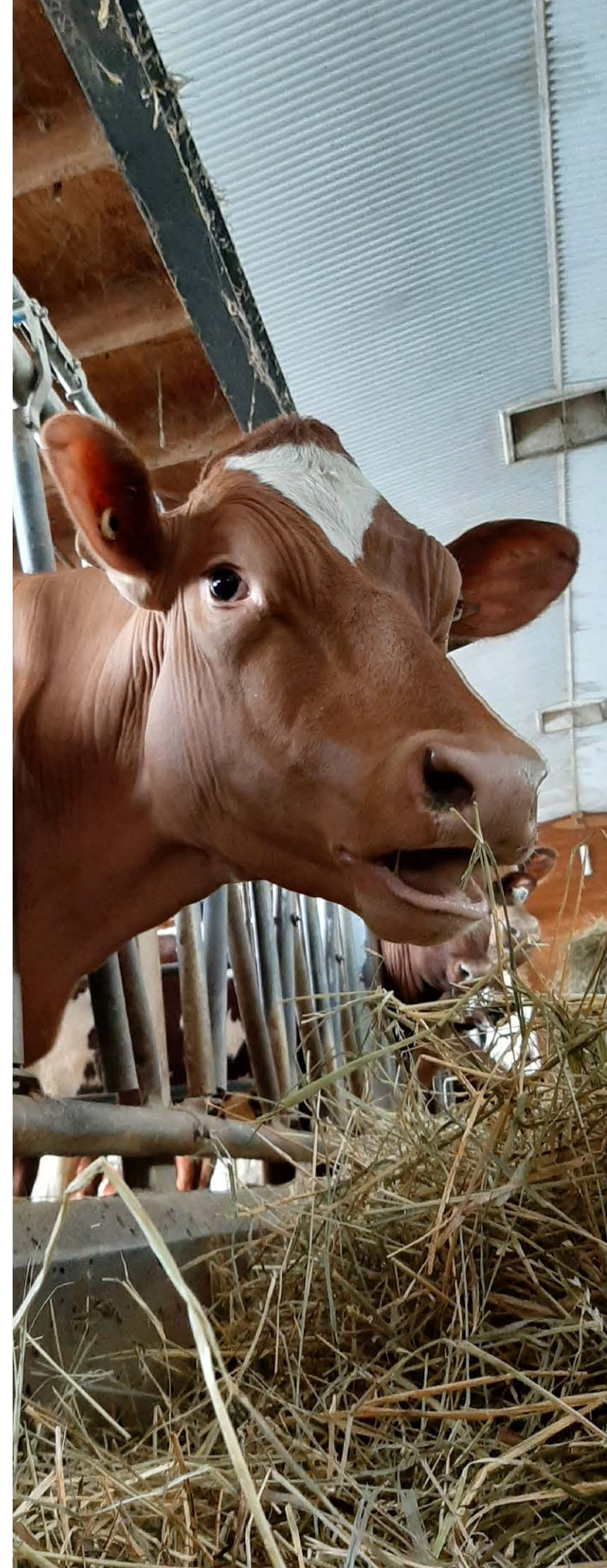
the same cows. Not surprisingly, the ones with more functional conformation overcame their contemporary cows by a good margin – they generated over \$2,500 more from milk sales during their lifetime than the ones with average conformation (considering a milk price of \$0.90/liter). If we compare with the ones with below average conformation, the difference exceeds \$6,000. In the end, every extra dollar a cow makes above the feed cost is "free money" because the cost to raise an average or better cow is pretty much the same. For that reason, investing in genetics and properly breeding your cows to result in better conformation does pay back in the long run.

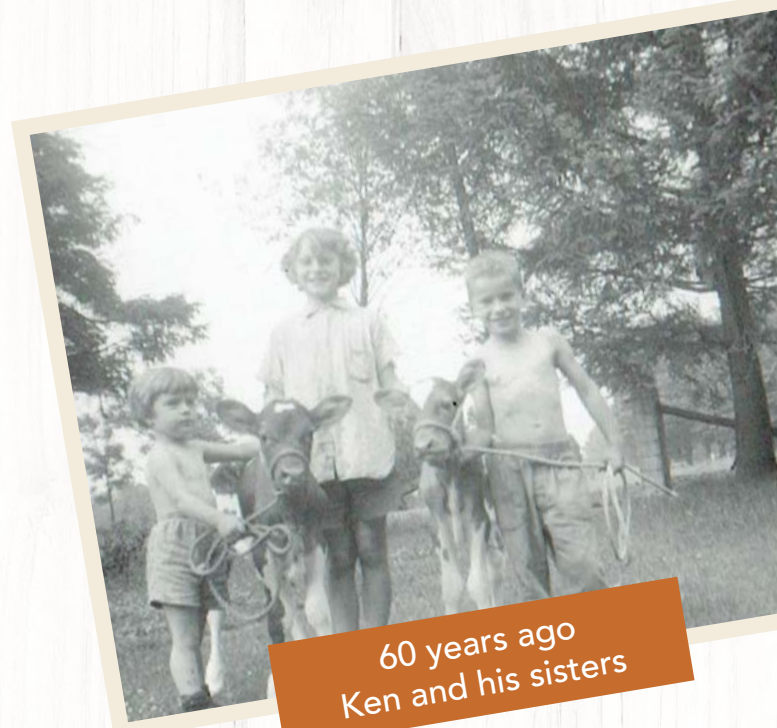


Looking at the Guernsey female scorecard, Mammary System, with 40%, is the most relevant area, with Fore Udder Attachment, Udder Texture and Median Suspensory Ligament the highest weighted traits. The reason is straightforward: they are the traits with stronger relationship with longevity. Simply speaking, a well attached fore udder with strong rear udder cleft keeps it from breaking down with age, while good texture is heavily associated with mammary gland health. For Feet and Legs, Rear Leg Rear View has the most weight due to its relationship with better mobility; then, the foot traits have the largest emphasis due to their relationship with hoof health, something the Guernsey breed excels in. Finally, Dairy Capacity is the most relevant trait within Dairy Strength due to its association with both production and longevity.

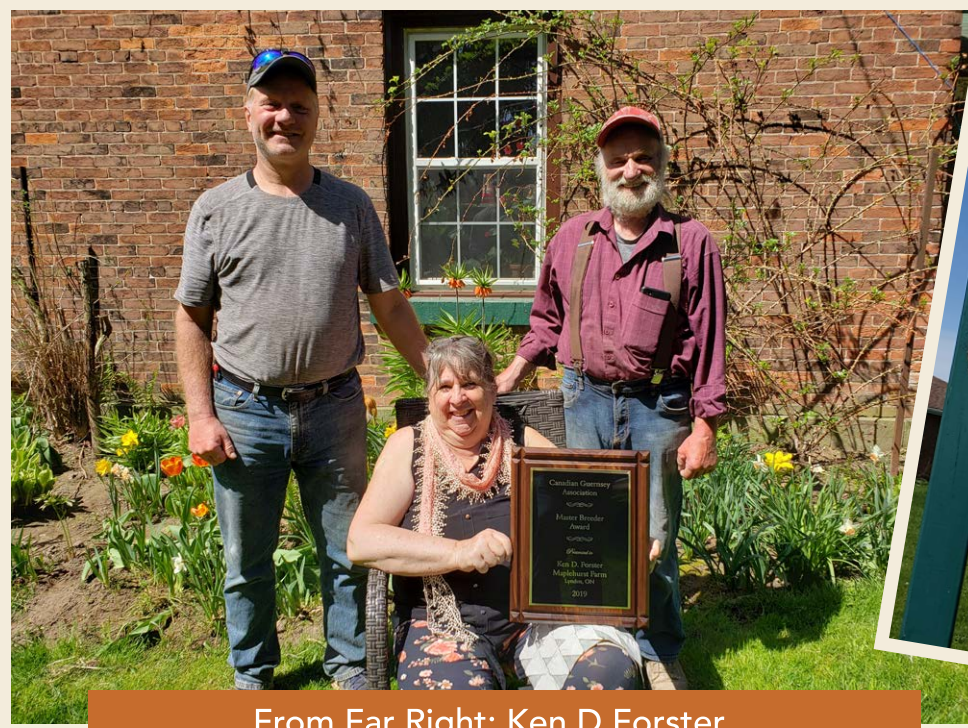
Functional conformation is the goal

Looking at the traits that have a higher association with longevity, it is not a coincidence that they are the highest weighted traits. These traits are the foundation of functional cows. Again, it is not a matter of scoring the ideal codes and, therefore, receiving a higher final score, but really a matter of functionality. An animal with traits scored very far from ideal is not functional for these characteristics, which translates into worse overall evaluation and lower chances of lasting for several lactations. For that reason, just a great udder may not guarantee a profitable cow – poor legs could be a limiting factor. And this is where producers should focus – breeding for balance and functionality.





60 years ago
Ken and his sisters



From Far Right: Ken D Forster,
his spouse Chris Forster and brother Rob Forster



Maplehurst Farm
farm sign

INSIGHTS FROM CGA MASTER BREEDER

Ken D. Forster of Maplehurst

The latest recipient of the Canadian Guernsey Association Master Breeder Award is Ken D. Forster of Maplehurst Farm, Lynden, Ontario. The Forster family dispersed their long-established and very well-known herd in the autumn of 2021 via both private treaty sales and a highly successful auction of heifers and a group of select milking age females.

Four generations of the Forster family have enjoyed working with Golden Guernseys since Ken's grandfather established the herd in 1929, ninety-three years ago.

We had the opportunity to ask Ken some questions regarding the herd and the Guernsey breed and he was more than happy to provide his insights.

Our conversation began with a question about the family's goals in developing their herd-what they

wanted the herd name Maplehurst to represent and how they approached the positive challenges of breeding and managing Guernseys.

Ken noted that around four decades ago the family analyzed their herd and noted that they had a herd of productive cows that were pleasing them in the milking department. They did some showing and learned that they could do some work on improving type. They decided they would take steps to breed an even more balanced cow retaining and continually improving production along with strong type supporting longevity. They also wanted easy keeping, healthy cows. Ken's late parents Ken A and Betty did a lot of study of females available in sales in Canada and the USA and established a target of "buying the best and leaving the rest" at top level sales. The senior Forsters attended many

sales. Mrs. Forster was often willing to encourage her husband to "Keep on bidding" if it appeared they were close to buying a top-flight animal they both admired. They let the philosophy of "These are the ones we want to take home to our farm" rule their bidding decisions.

Ken recalls that they invested amounts of 1980 and 1990 dollars that would be regarded as high prices today, decades later. This practice paid off handsomely for the family as they identified foundation cows who started strong families.

Ken recalls the purchase of one of their later herd sires Chedco Hollyhock's King, a 1968 bull bred in the Northeast of the United States. The owner of Chedco sent the Forsters information on a number of bulls including Hollyhocks King. This bull was far from the lowest price bull in the group. He had a pedigree and prospects that appeared to

support what the Forsters wanted and needed in taking their herd to the next level. So, they settled on him as their choice. Again, high quality was the breeding goal.

The Forsters moved on to use of AI and also were ready to adopt use of newer technology like embryo transfer. In the early going the results were variable but the Forsters persisted in using this genetic improvement tool. Ken smiled when he said that the eternal optimism of farming people took hold- "The next flushes will be better." Ken noted that decades later there are some very good Maplehurst-bred animals who resulted from purchase of a top-flight female who was subsequently flushed at Maplehurst.

In summation Ken commented that later generations have been beneficiaries of his parent's passion for identifying animals they believed would better the herd and then

being will to pay fair prices for better genetics. Over time the Forster family were able to reap a return in their investment in top genetics via sales of breeding stock and building a reputation for animals that performed for their buyers.

Before their dispersal last autumn Ken was pleased with the status of the herd with approximately 25 Excellent cows in a herd of right around 60 milking age females.

We then moved on to the topic turned to changes in the Guernsey breed during his time as an active herd manager and owner. Ken shared that the move from production of 10,000 pounds to seeing cows making records at 20,000 pounds of milk (or 4500 kilograms to over 9,000 kilos) was the change that made the deepest impression on him. He is excited by how modern Guernseys can deliver

higher yields with relative ease. In looking to the future of the breed Ken is finds the ready market for Guernsey stock inspirational. He calls the level of demand for good Guernseys in the US and Canada phenomenal. When he analyzes why that market for Guernsey females is so strong he sees demand for Guernsey milk for specialty products and on-farm or smaller scale processing as the driver for demand. As Ken puts it: "It all rests on the quality of the milk Guernseys produce and how that quality is a magnet for demand. Ken sees that demand stretching far into the future.

It will come as no surprise that family members own a few head of younger Guernseys at the home farm or housed at local farms. The passion for Guernseys and Guernsey genetics is lifelong!



Coloured Breed Highlights

APRIL 2022

LPI Leaders Stay Solid in the Guernsey Breed

While some reranking occurs among the breed leading sires and cows, one thing that doesn’t change are the two LPI leaders. For sires, Dairyman Double Dawson changes only 5 points and stays solid at #1 LPI (now tied #2 Fat). His sire, Pine Ridge Double L, holds on to the #2 LPI position and shares #2 Fat with his son. Climbing one spot to take #3 LPI this April is Paokie Lil Ernie (tied #7 Fat), who is now followed by Springhill Jokes Jaguar at #4 LPI (up from #6) and Lang Haven Grumpy Novak in #5 spot to complete the list of Top 5 LPI sires (tied #7 Milk, tied #7 Fat, #2 Protein).

On the cow side, its Lindrian Pamper Bear ET 200 who stays firm at #1 LPI while the next three cows reshuffle among themselves. Guernsey View Jaguar Erin climbs from #4 to #2 LPI this round (tied #6 Fat, tied #8 Protein), moving ahead of her dam, Guernsey View Urma’s Expense, who holds on to the #3 LPI spot (#3 Fat). Eby Manor D L Indy loses some ground but keeps her elite status at #4 LPI (#2 Fat). Gaining over 100 LPI points, Eby Manor Ernie Raelynn jumps from her former #11 position to #5 LPI (tied #8 Protein) and completes the Top 5 LPI list this April. The highest newly indexed cow this round is Coulee Crest Bummer Larita at #39 LPI (dam is Coulee Crest Copper Lauryn–ETV).

Rank	LPI	No. Cows	Name of Farm/Owner	City	Prov	Milk	Fat	Prot	Fat%	Prot %	SCS	CONF	MS	F&L	DS	RP
1	1093	15	LINDRIAN FARMS	SURREY	BC	218	9	7	0.01	-0.01	103.7	5.6	5.7	3.0	1.7	0.9
2	1022	31	FERME IMPERIALE	NOYAN	QC	189	8	7	0.03	0.03	102.5	2.9	2.9	2.4	0.3	0.7
3	945	60	EBY MANOR FARM LTD.	WATERLOO	ON	79	9	4	0.09	0.02	100.5	2.7	2.7	2.0	0.9	1.3
4	881	49	COMFORT FARMS	ST ANNS	ON	-15	-1	0	0.00	0.01	104.6	2.3	2.3	2.3	1.2	-0.3
5	855	21	MARLIN AND SHIRLEY MARTIN	WATERLOO	ON	-126	0	-1	0.08	0.05	101.3	2.4	2.4	1.5	0.3	0.5



Guernsey Breed Classifications

DEC 01, 2021 TO APR 30, 2022 - 80+

Registration Number	Name	Final Class	Final Score	ME	Visit Date
GUCANF12292464	MAPLEHURST PILOT TREAT	EX	93	2	2022-03-08
GUCANF11902310	COMFORT FARMS DIAMOND	EX	90	3	2022-03-23
GUCANF12292455	MAPLEHURST PILOT SEABISC	EX	90	2	2022-03-21
GUCANF11790176	CEDAR ROCK BIGSHOTTOO DIME	EX	90	2	2022-03-29
GUCANF12677196	LINDRIAN PAYA LATIMER	EX	90	0	2022-02-07
GUCANF12236374	LINDRIAN PILOT DALIE	EX	90	0	2022-02-07
GUCANF12677188	LINDRIAN POLLA LEVI	EX	90	0	2022-02-07
GUCANF12949169	EBY MANOR NOVAK LEMON	EX	90	0	2022-01-05
GUCANF12062990	EBY MANOR JAGUAR FAITH	EX	90	0	2022-01-05
GUUSAF97004839	COULEE CREST LADYSMAN LUNAR	VG	88	0	2022-01-17
GUUSAF97004438	COULEE CREST COPPER LAURYN -ETV	VG	87	0	2022-01-17
GUCANF12725334	WARRINDALE REINDEER PILOT	VG	87	0	2022-03-16
GUCANF12292505	MAPLEHURST LATIMER ZENITH	VG	87	0	2022-01-24
GUCANF111428363	MARDI LEGEND URIKANNE	VG	87	0	2022-03-24
GUCANF13233165	LINDRIAN PAMELA ERNIE	VG	86	0	2022-02-07
GUUSAF97001911	SNIDERS GRUMPY KHAOS	VG	86	0	2022-01-17
GUUSAF97007170	COULEE CREST SHERLOCK JOLEE	VG	86	0	2022-01-17
GUCANF12838588	CEDAR ROCK CASPIAN BARB	VG	86	0	2022-03-29
GUCANF12459957	CEDAR ROCK LEOPOLD JENIFER	VG	85	0	2022-03-29
GUCANF12949185	EBY MANOR NAVAJO PEPPERMINT	VG	85	0	2022-01-05
GUUSAF97009362	SUNNY MEAD NOVAK GOLDIE	VG	85	0	2022-01-05
GUUSAF97007133	COULEE CREST NET WORTH LIBBY	VG	85	0	2022-01-17
GUCANF12615118	DON HAVEN KAKADU VELMA	VG	85	0	2022-03-04
GUCANF13262807	MAPLEHURST LIGHTNING KINDER	VG	85	0	2022-01-11
GUCANF13233197	LINDRIAN BEAU PIEYA	GP	84	0	2022-02-07
GU840F3200732080	GR-DAIRYMAN TOBY 4160 ATHENS	GP	84	0	2022-03-10
GUCANF120051028	MARDI ERNIE ROUGETTE 501	GP	84	0	2022-03-24
GUCANF12838630	CEDAR ROCK DOUBLE ORANGE	GP	83	0	2022-03-29
GUCANF13520621	EBY MANOR NOVAK WISDOM	GP	83	0	2022-01-05
GUCANF12063013	EBY MANOR ERNIE SHILOH	GP	83	0	2022-01-05
GUCANF13259146	LILLIES BAMBI LAKODA	GP	83	0	2021-12-01
GU840F3200732147	DAIRYMAN BEAU 4227 ALLOY	GP	83	0	2022-03-10
GUCANF13233213	LINDRIAN POE BEAU	GP	83	0	2022-02-07
GU840F3209615557	JENS GOLD BUMMER KYRIE	GP	82	0	2022-03-10
GU840F3208361397	COULEE CREST CROWN ROYAL LANA	GP	82	0	2022-03-10
GU840F3208361433	COULEE CREST BEAVER KATY	GP	82	0	2022-03-10
GUCANF120051041	MARDI BEAU THOMASCINA	GP	82	0	2022-03-24
GUCANF13520635	EBY MANOR NOVAK FYRE	GP	82	0	2022-01-05
GUUSAF97007198	ROZELYN VICTOR CAROL	GP	82	0	2022-02-10

GUCANF13363019	LEWIS-LS BEAU DELIGHT	GP	81	0	2022-03-23
GUUSAF97007188	ROZELYN DANIEL DARLA	GP	81	0	2022-02-10
GUCANF13262791	MAPLEHURST LEGEND BAMBI	GP	81	0	2022-01-17
GUUSAF97008299	GR-GAJOLY BOMAN CALLIE	GP	81	0	2022-01-17
GUCANF120051042	MARDI LIBIDO ULTIME	GP	81	0	2022-03-24
GUCANF111428344	MARDI PHONZE RIGOLETTE	GP	81	0	2022-03-24
GUCANF111057238	MARDI LATIMER CHAUDE	GP	81	0	2022-03-24
GUCANF111428364	MARDI SERGEANT JOLIETTE	GP	81	0	2022-03-24
GUCANF13408844	FULLER VIEW BEAU GRETA	GP	81	0	2022-03-28
GUCANF111375784	JENS GOLD NOVAK 5784	GP	81	0	2022-03-10
GU840F3214098831	COULEE CREST TK LATINA-ETV	GP	81	0	2022-03-10
GUCANF111375789	DAIRYMAN LAMBEAU 5789	GP	81	0	2022-03-10
GUCANF13408843	FULLER VIEW BEAU GISELLE	GP	81	0	2022-03-28
GUCANF111428367	HEIDEGG PISTOLL NOIRE 489	GP	80	0	2022-03-24
GUCANF120057046	MARDI LEGEND SERF	GP	80	0	2022-03-24
GUCANF120051026	MARDI LADYS MAN XENYA 499	GP	80	0	2022-03-24
GUCANF12512719	HYLANE GRACE	GP	80	0	2022-01-17
GUCANF12949200	EBY MANOR LIGHTNING LIANNA	GP	80	0	2022-01-05
GUCANF12949175	EBY MANOR ERNIE IDAHO	GP	80	0	2022-01-05
GUCANF13233193	LINDRIAN PASTRY BEAU	GP	80	0	2022-02-12

Return of the National Guernsey Show!

The most recent live and in-person National Guernsey Show was presented in September 2019 at Ancaster Fair.

Great news! There will be a National Guernsey Show in 2022, being one of the very first events held at the Ancaster Fair.

We are thrilled that this very positive event will make a return this year.

2022 National Guernsey Show

Thursday, September 22, starting at 4:00 p.m.

Judge: Brent Howe, Aylmer, Ontario

Stay tuned for more details on how entries can be made via Ancaster Fair!



Your Solution for ALL BREEDS* Genomic Testing!

CLARIFIDE at Holstein Canada provides a High Density Canadian genetic evaluation that automatically includes:

Parentage Verification

Beta Casein (A2A2)

Kappa Casein (BB)

*HO, JE, AY, BS, GU currently supported

Ask us about CLARIFIDE at Holstein Canada today!

genomics@holstein.ca
1-855-756-8300 ext. 481EN / 491FR

*Some exclusions apply.
Zoetis® and Clarifide® are registered trademarks of Zoetis or its licensors.
© 2022 Zoetis Services LLC. All rights reserved.



Average Production by Breed

BASED ON OFFICIAL - SUPERVISED RECORDS IN CANADA

	Number of Records	Milk kg	Fat		Protein		BCA		
			kg	%	kg	%	Milk	Fat	Protein
2021	304	7,394	344	4.67%	257	3.48%	226	209	220
2020	324	7,285	337	4.65%	254	3.50%	223	206	218
2019	278	7,276	344	4.74%	255	3.51%	219	206	216
2018	295	7,273	340	4.71%	251	3.47%	220	206	213
2017	317	7,389	351	4.77%	254	3.46%	222	210	214
2016	351	7,086	331	4.69%	241	3.42%	214	199	205
2015	384	6,730	313	4.67%	228	3.40%	203	189	194
2014	370	6,759	315	4.69%	231	3.43%	205	191	197
2013	375	6,952	322	4.64%	239	3.45%	211	195	204
2012	374	6,831	313	4.60%	234	3.44%	207	190	200

BCA: Breed Class Average

Source: Agriculture and Agri-Food Canada
Compiled by Agriculture and Agri-Food Canada, Animal Industry Division, Market Information Section

Top 10 Cows - All Time Milk Producers

Reg#	Animal	Class	#Lacts	Milk	Fat	Prot	Max CalvingD	Owner
GUCANF200089	REDNGOLD COLUMBUS DAWN	VG	11	114,824	5,429	4,283	25-Jun-10	ALAN SPENCE, ON
GUCANF10033581	EBY MANOR JORDAN DEKOTA	GP	13	107,818	5,467	3,859	23-Apr-16	EBY MANOR LTD, ON
GUCANF8171601	LINDRIAN MAGICMAN POPPY	GP	7	102,609	4,685	3,681	11-Jun-10	JOHN & LINDA TAMIS, BC
GUCANF196405	MAPLEHURST KINGS LILIAN	EX	10	90,845	3,965	3,051	25-Aug-04	ROBERT FORSTER, ON
GUCANF10019240	MAPLEHURST BEST SATINA	VG2	8	86,583	3,367	2,622	11-Feb-09	KEN D FORSTER, ON
GUCANF195925	BEAVERWOOD MARION 2		13	84,827	3,658	3,029	31-Dec-06	GARY WEST, NB
GUCANF10000677	MAPLEHURST WARDEN BIANCA	VG	5	84,347	3,804	3,023	24-Oct-03	KEN D FORSTER, ON
GUCANF7680006	BIG SPRING DECISION WANDA	VG	9	83,365	4,007	2,890	07-May-19	EBY MANOR LTD, ON
GUCANF192275	MAPLEHURST FALCON CANARY	GP	6	81,997	3,374	2,930	17-Sept-96	PETER NOOYEN, ON
GUCANF7541807	LINDRIAN PATSY LAMAR 27	GP	8	81,746	3,692	2,658	18-Apr-16	JOHN & LINDA TAMIS, BC



DairyTrace – Common Questions

DairyTrace is the national dairy cattle traceability program administered by Lactanet Canada. DairyTrace provides protection, prosperity and peace of mind to the Canadian dairy industry and its customers in the event of emergency management.

As a dairy farmer, what are the timelines to report events when they occur on farm?

To summarize, as per proAction requirements, dairy farmers must **report within seven (7) days** of the event occurring on their premises the following events:

Event Type		Time
Tagging	Cross reference (previous tag number is known)	7 days
Tagging	Replacement (previous tag number is not known)	7 days
Movement	Move-in	7 days
Movement	Import	7 days
Movement	Move-out (currently optional but recommended)	7 days
Tag Retirement	On-farm disposal	7 days
Tag Retirement	Export	7 days

Dairy farmers must **report within 45 days** of the event occurring on their premises the following event:

Tagging	Tag activation / Birth	45 days
---------	------------------------	---------

Tag activation/birth must be reported sooner if the animal leaves the premises before 45 days of age. Event type reporting applies to both female and male animals.

For any questions on event reporting contact customer service to assist you.



Support for Provinces Outside of Québec:
1-866-558-7223 or
info@DairyTrace.ca



Support in Québec: **SimpliTrace**
1-866-270-4319 or
sac@attestra.com

COULEE CREST CARVER

0200GU00126 VENGEANCE x NET WORTH x LAKODA  

+1154 GLPI **+8 CONFORMATION** **+8 MAMMARY SYSTEM**
+5 FEET & LEGS **+104 HERD LIFE**

SOURCE: GPA APR*22 PHOTO: CARL SAUCIER



A unique sire stack of Vengeance x Net Worth x Lakoda
makes him an easy and logical use on all of the
predominant bloodlines in the breed.


WestGen™


EastGen


CIAQ

www.semex.com

